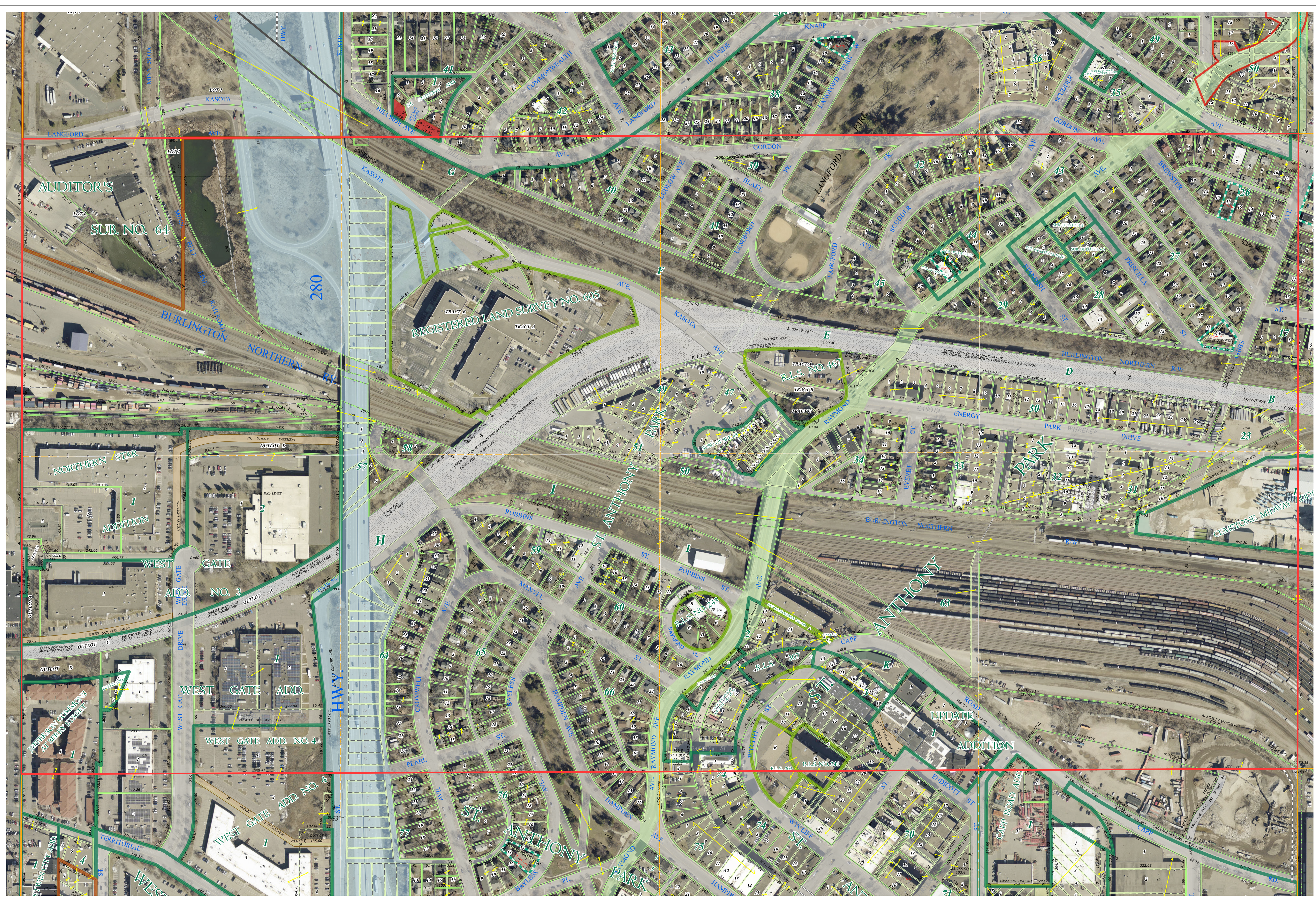
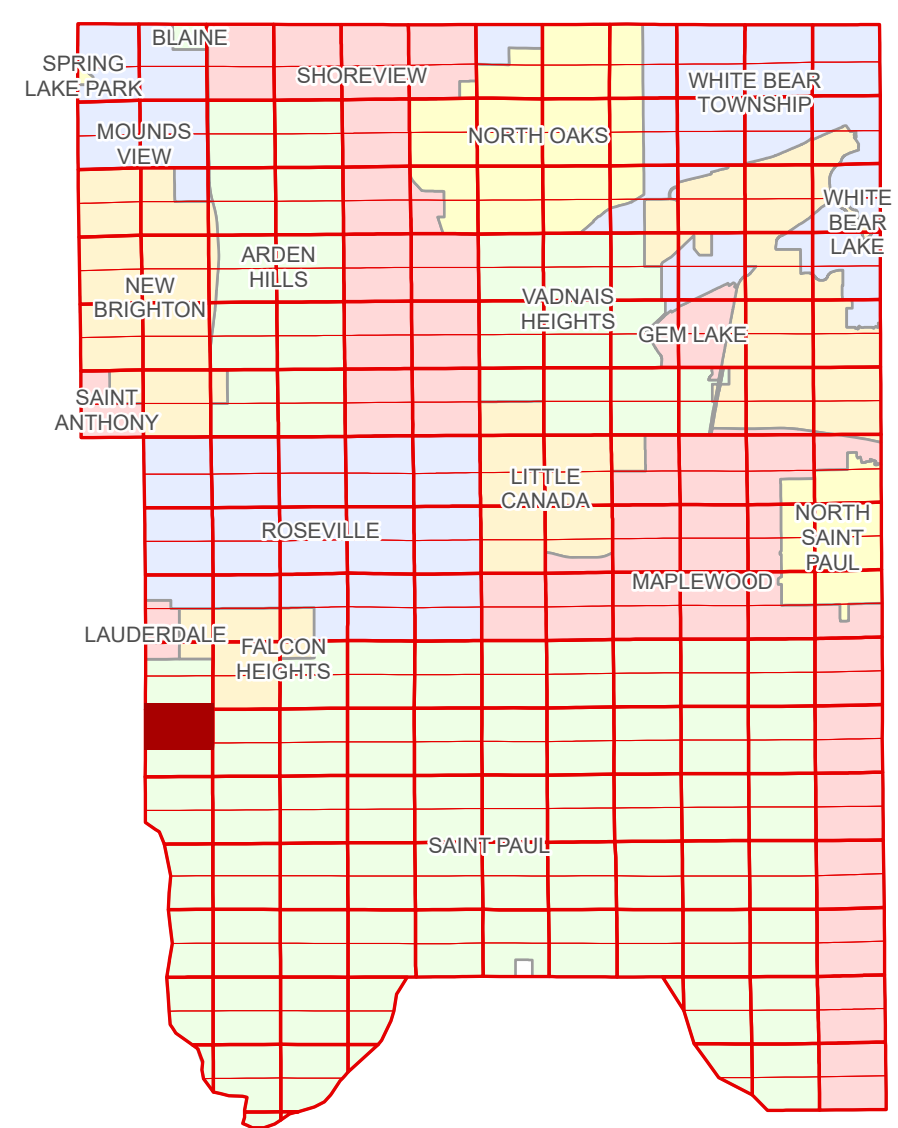


Ramsey County Minnesota Parcel Map

N Half
Section 29
T 29 N
R 23 W

Ramsey County
Section 20



Hennepin County
Section 30

Section 28
Ramsey County

Legend

Section	Metes & Bounds
Quarter	Tax Parcel Type
Quarter Quarter	Personal Property
State Right of Way	State Assessed Property
County Right of Way	Real Property
Municipal Right of Way	Easement Type
Subdivision Type	Private Driveway
Subdivision Plat	Utility, Electric
Registered Land Survey	Utility, Storm & Sanitary Sewer
Auditor's Subdivision	Utility, Unidentified
Condominium	Misc Easements
Division Type	
Lot	

Aerial Imagery Date: March 11 - April 4, 2024



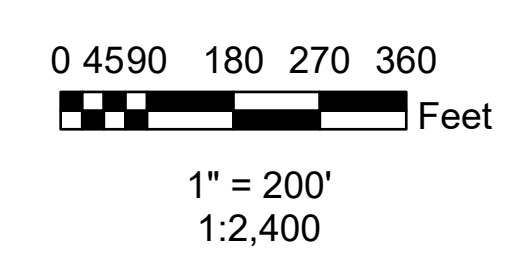
The information on this map is a compilation of Ramsey County Records. THE COUNTY DOES NOT WARRANT OR GUARANTEE THE ACCURACY OF THIS DATA. The County disclaims any liability for any injuries, time delays, or expenses you may suffer if you rely in any manner on the accuracy of this data.

Produced by Information Services Enterprise GIS Division
RCGISMetaData@Co.Ramsey.MN.US

NOTE: This is not an official Ramsey County tax lot map. This is based on the data available in the Geographic Information System, which may vary from tax data officially recorded in the Tax System. For an official tax map, please contact the Office of Property Records and Revenue.

651-266-2000
AskPropertyTaxandRecords@co.ramsey.mn.us

Section 29
Ramsey County



N292923
1/3/2025