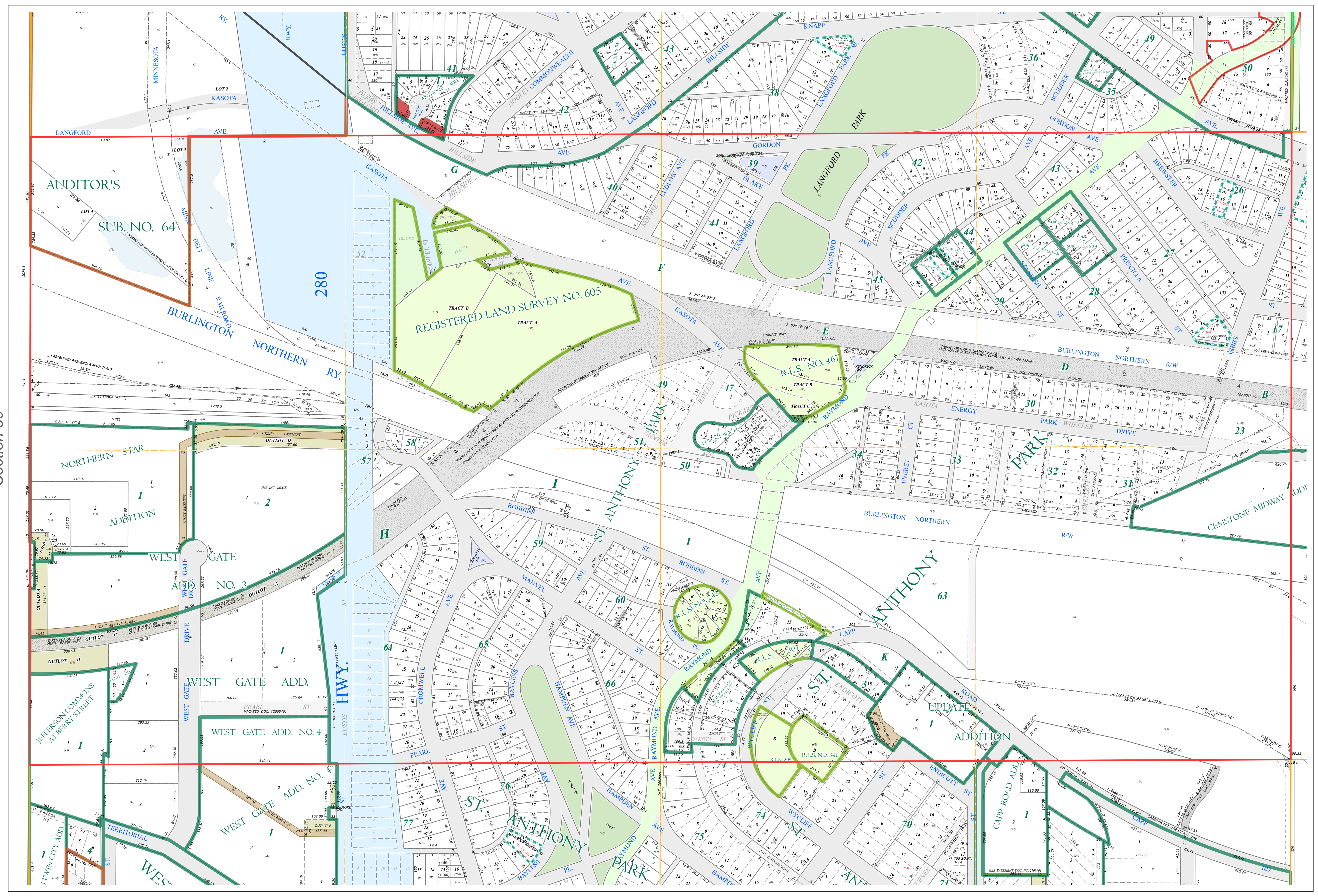
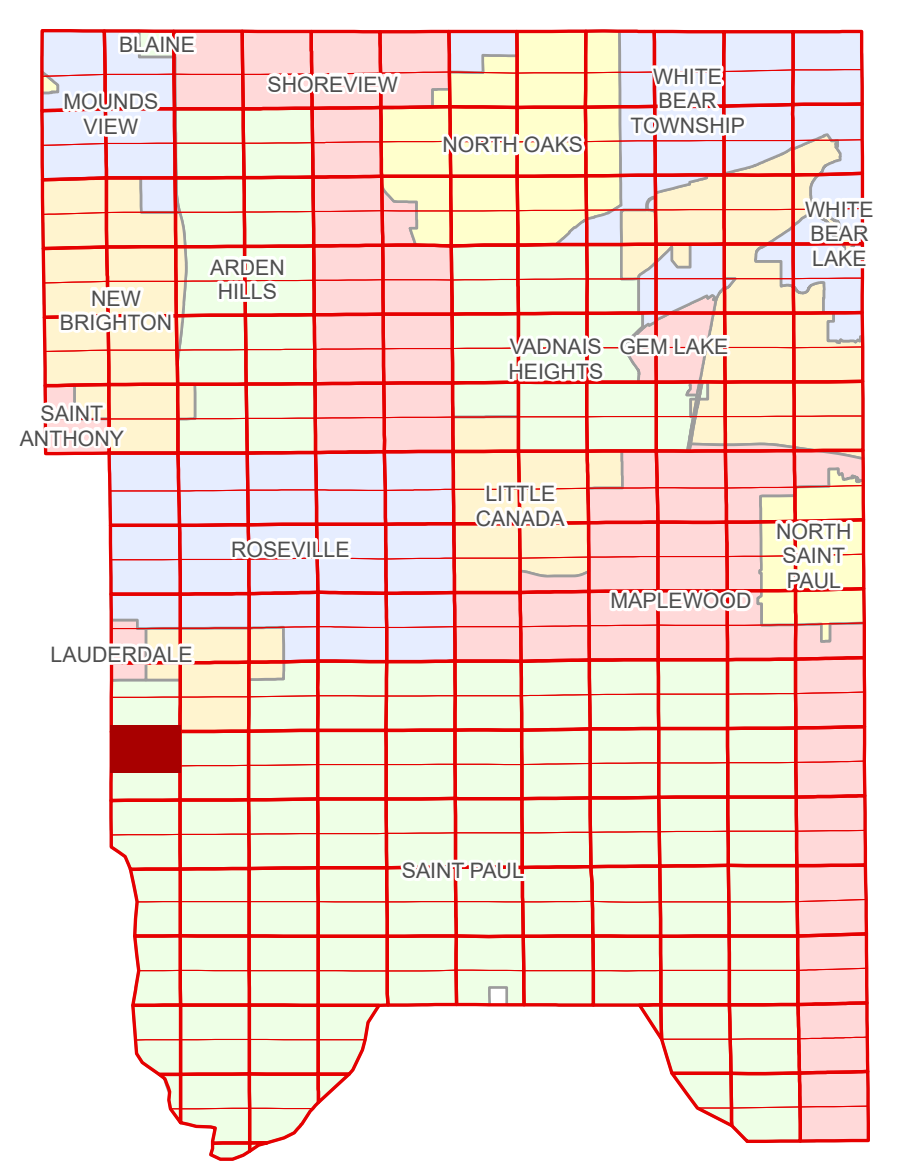


Ramsey County Minnesota Parcel Map

N Half
Section 29
T 29 N
R 23 W

Ramsey County
Section 20



Hennepin County
Section 30

Section 28
Ramsey County

Legend			
	Section		Metes & Bounds
	Quarter		Tax Parcel Type
	Quarter Quarter		Personal Property
	State Right of Way		State Assessed Property
	County Right of Way		Real Property
	Municipal Right of Way		Easement Type
	Subdivision Type		Private Driveway
	Registered Land Survey		Utility, Electric
	Auditor's Subdivision		Utility, Storm & Sanitary Sewer
	Condominium		Utility, Unidentified
	Division Type		Misc Easements
	Lot		
	Other		
	Outlot		
	Park		
	Tract		

The information on this map is a compilation of Ramsey County Records. THE COUNTY DOES NOT WARRANT OR GUARANTEE THE ACCURACY OF THIS DATA. The County disclaims any liability for any injuries, time delays, or expenses you may suffer if you rely in any manner on the accuracy of this data.

Produced by Information Services Enterprise GIS Division
RCGISMetaData@Co.Ramsey.MN.US

NOTE: This is not an official Ramsey County tax lot map. This is based on the data available in the Geographic Information System, which may vary from tax data officially recorded in the Tax System. For an official tax map, please contact the Office of Property Records and Revenue.

651-266-2000
AskPropertyTaxandRecords@co.ramsey.mn.us

Section 29
Ramsey County



N292923
1/3/2025