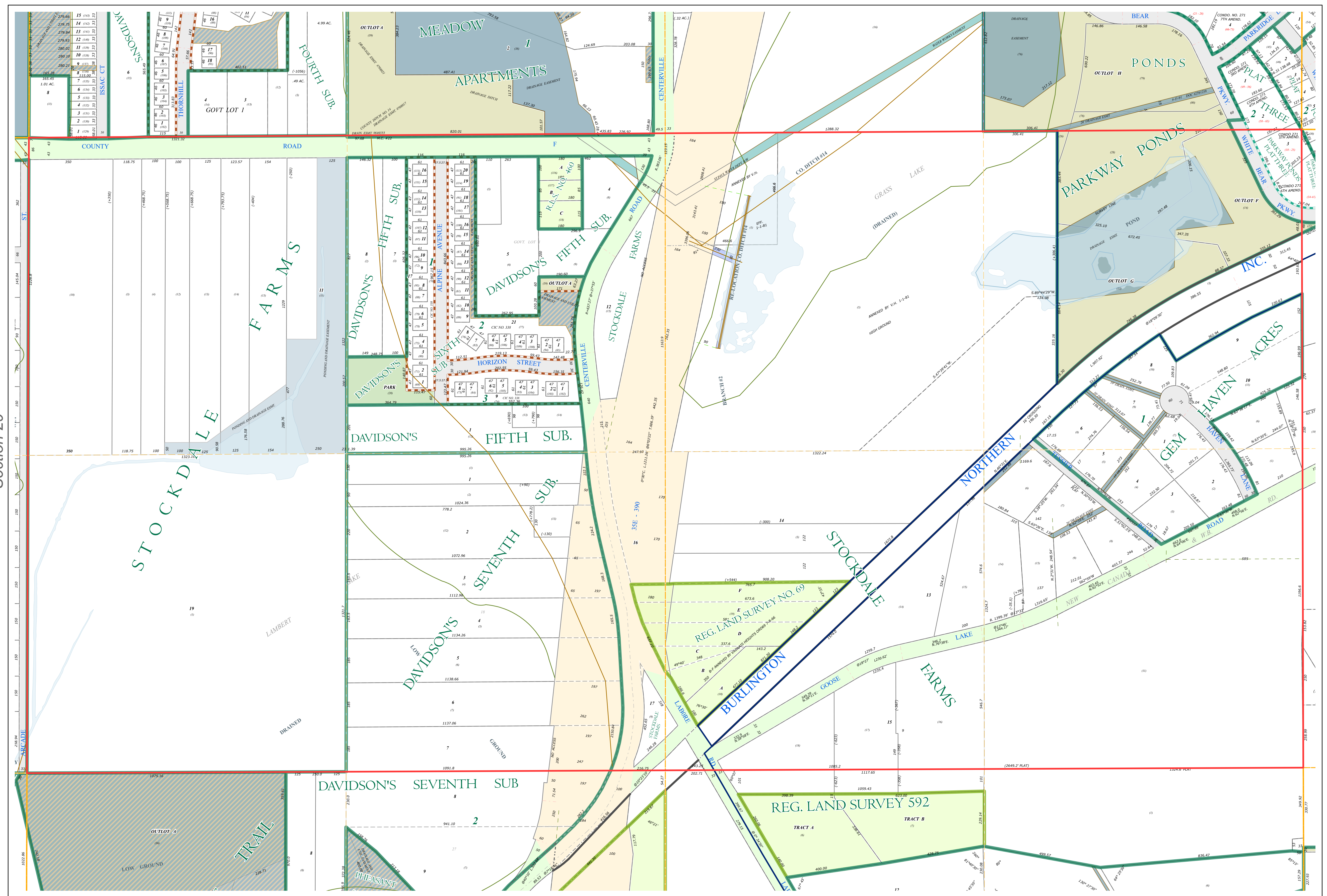
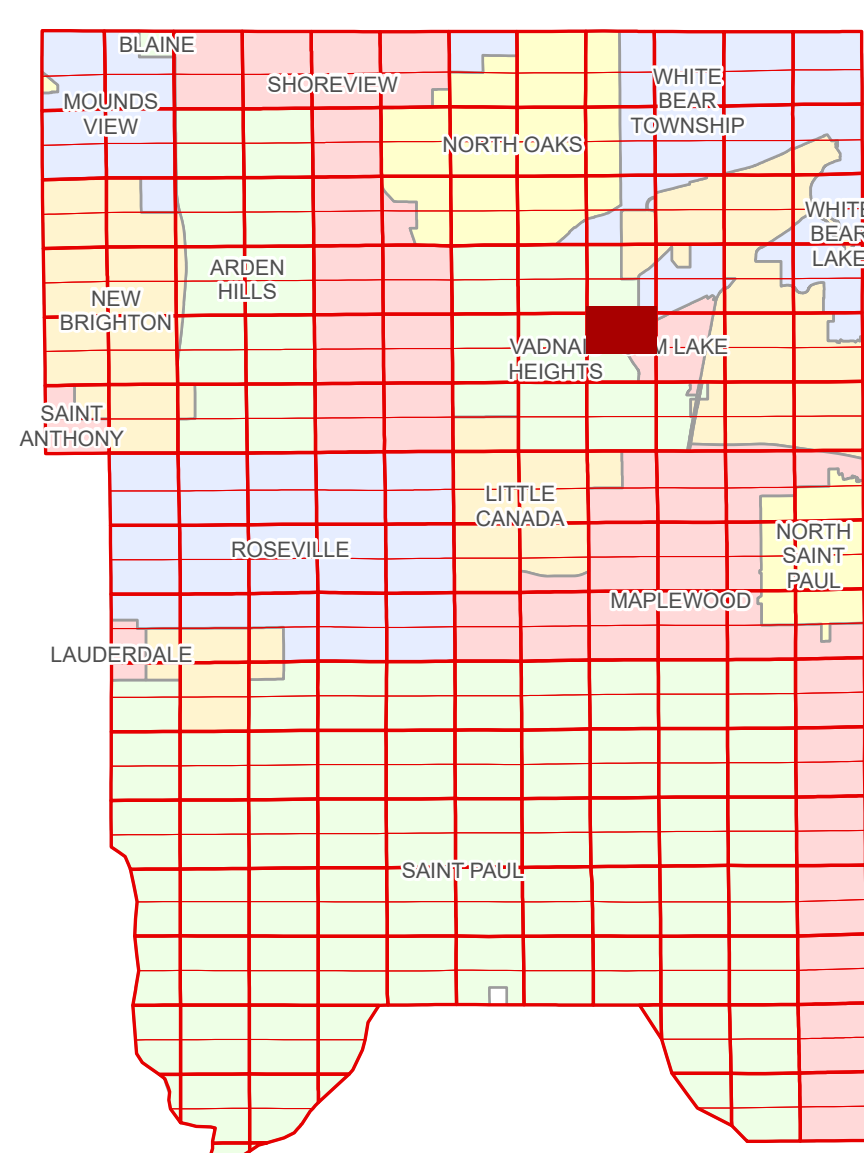


# Ramsey County Minnesota Parcel Map

Ramsey County  
Section 21

N Half  
Section 28  
T 30 N  
R 22 W



Ramsey County  
Section 29

Section 27  
Ramsey County

**Legend**

Section	Division Type
Quarter	Lot
Quarter Quarter	Outlot
Federal Right of Way	Park
County Right of Way	Tract
Municipal Right of Way	Metes & Bounds
<b>Subdivision Type</b>	<b>Tax Parcel Type</b>
Subdivision Plat	State Assessed Property
Registered Land Survey	Real Property
Planned Community	<b>Easement Type</b>
Condominium	Ditch, County & Judicial
	Ponding
	Utility, Water
	Drainage & Utility
	Drainage

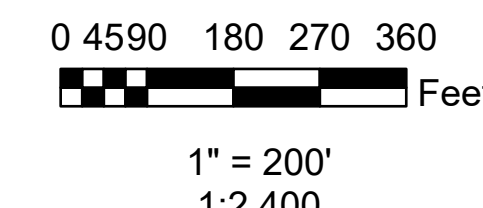
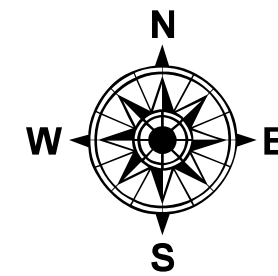
The information on this map is a compilation of Ramsey County Records. THE COUNTY DOES NOT WARRANT OR GUARANTEE THE ACCURACY OF THIS DATA. The County disclaims any liability for any injuries, time delays, or expenses you may suffer if you rely in any manner on the accuracy of this data.

Produced by Information Services Enterprise GIS Division  
RCGISMetaData@Co.Ramsey.MN.US

NOTE: This is not an official Ramsey County tax lot map. This is based on the data available in the Geographic Information System, which may vary from tax data officially recorded in the Tax System. For an official tax map, please contact the Office of Property Records and Revenue.

651-266-2000  
AskPropertyTaxandRecords@co.ramsey.mn.us

Section 28  
Ramsey County



N283022  
1/3/2025

