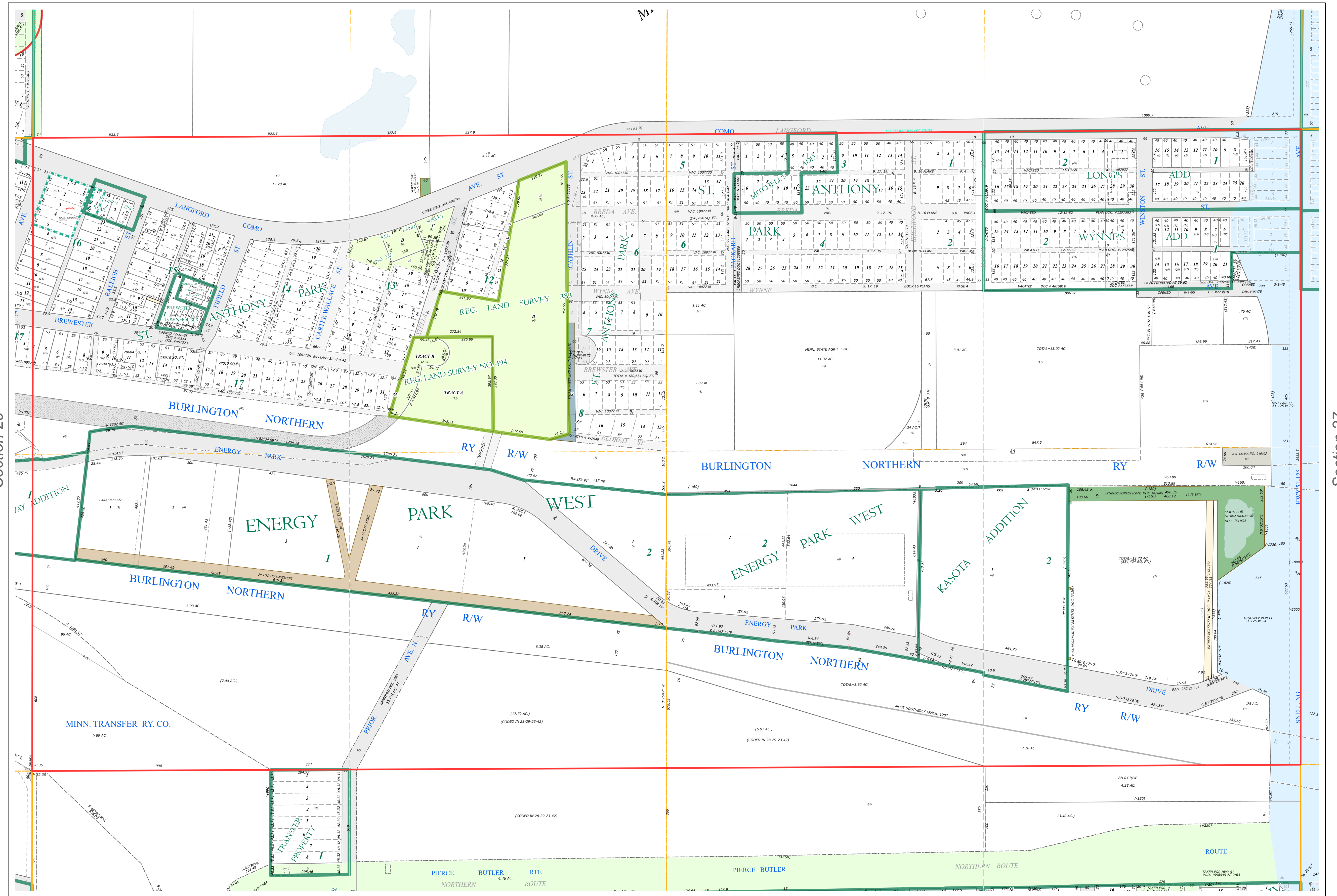
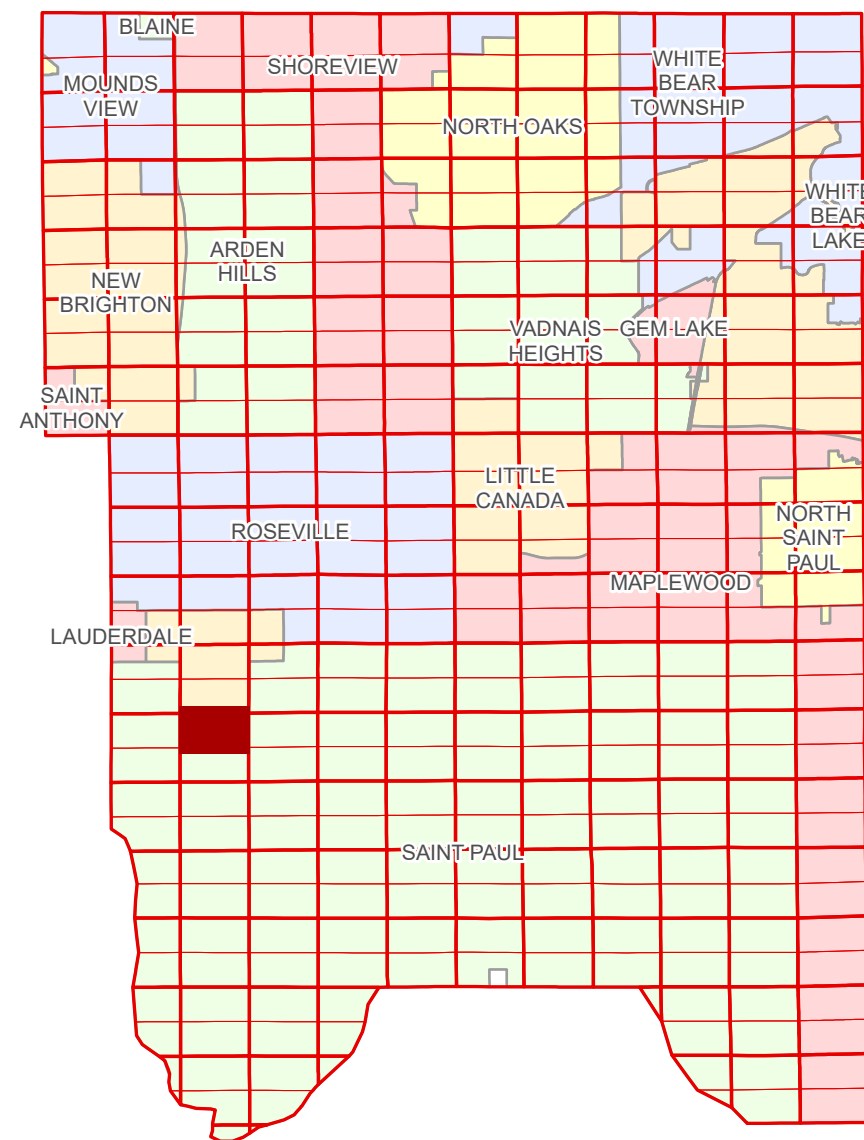


Ramsey County Minnesota Parcel Map

Ramsey County
Section 21

N Half
Section 28
T 29 N
R 23 W



Ramsey County
Section 29

Section 27
Ramsey County

Legend			
	Section		Tax Parcel Type
	Quarter		Personal Property
	Quarter Quarter		State Assessed Property
	State Right of Way		Real Property
	Municipal Right of Way		Easement Type
	Subdivision Type		Parking
	Subdivision Plat		Private Access
	Registered Land Survey		Utility, Storm & Sanitary Sewer
	Condominium		Utility, Water
	Division Type		Utility, Unidentified
	Lot		Drainage
	Tract		Misc Easements
	Metes & Bounds		

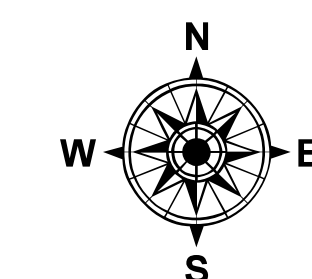
The information on this map is a compilation of Ramsey County Records. THE COUNTY DOES NOT WARRANT OR GUARANTEE THE ACCURACY OF THIS DATA. The County disclaims any liability for any injuries, time delays, or expenses you may suffer if you rely in any manner on the accuracy of this data.

Produced by Information Services Enterprise GIS Division
RCGISMetaData@Co.Ramsey.MN.US

NOTE: This is not an official Ramsey County tax lot map. This is based on the data available in the Geographic Information System, which may vary from tax data officially recorded in the Tax System. For an official tax map, please contact the Office of Property Records and Revenue.

651-266-2000
AskPropertyTaxandRecords@co.ramsey.mn.us

Section 28
Ramsey County



0 450 180 270 360
Feet

1" = 200'
1:2400

N282923

1/3/2025