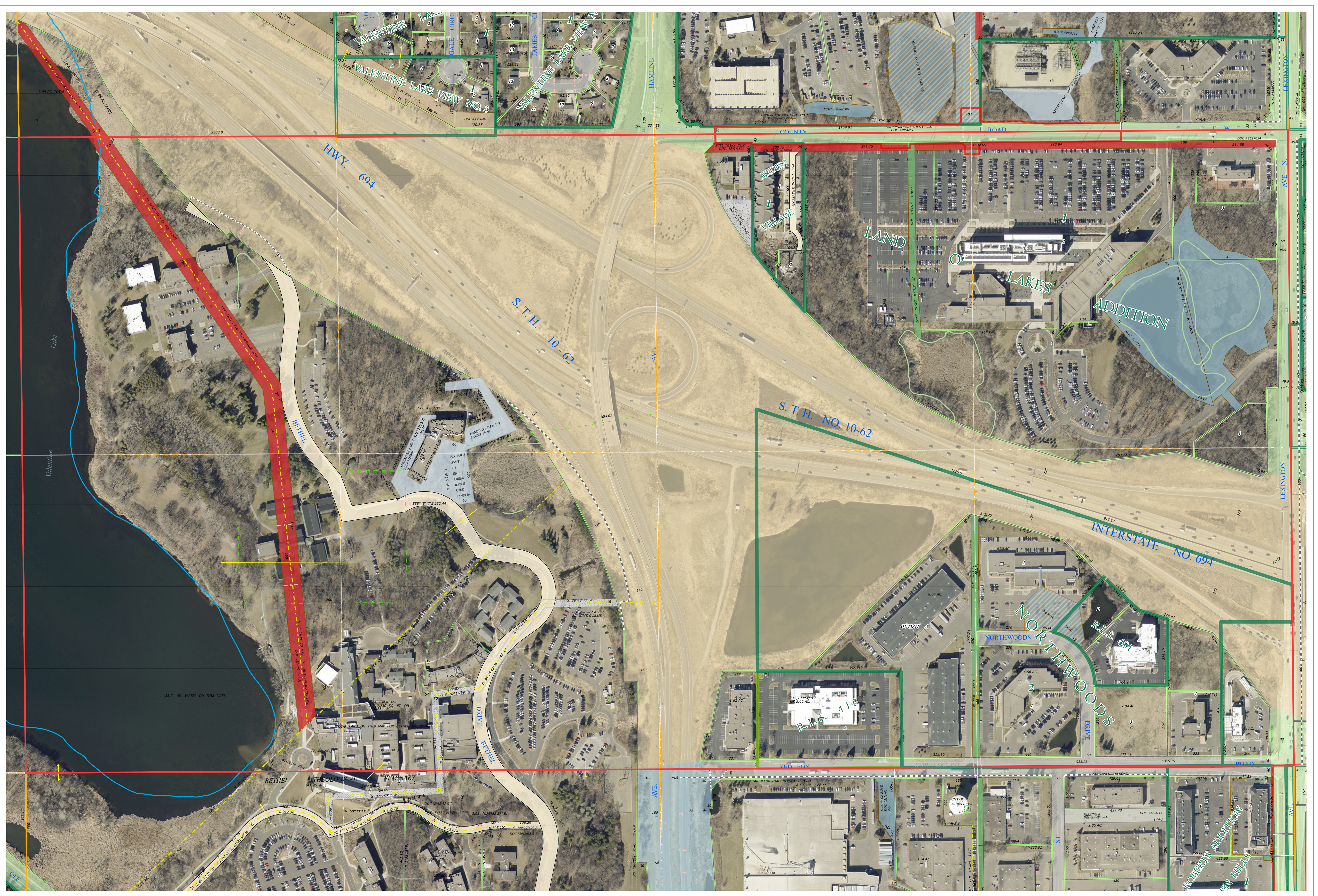
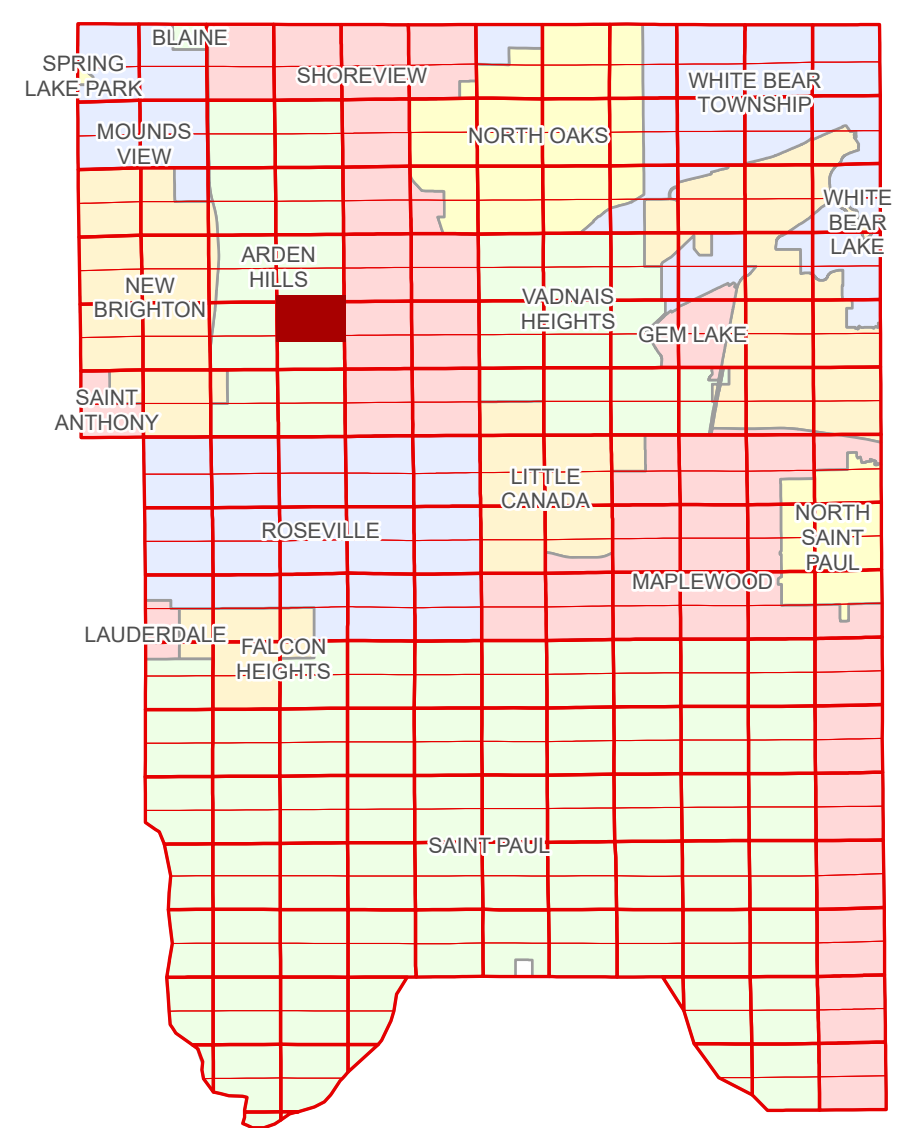


Ramsey County Minnesota Parcel Map

Ramsey County
Section 22

N Half
Section 27
T 30 N
R 23 W



Ramsey County
Section 28

Section 26
Ramsey County

Legend			
	Section		Metes & Bounds
	Quarter		Tax Parcel Type
	Quarter Quarter		Personal Property
	Federal Right of Way		Real Property
	State Right of Way		Easement Type
	County Right of Way		Ponding
	Municipal Right of Way		Private Access
	Subdivision Type		Utility, Electric
	Subdivision Plat		Utility, Storm & Sanitary Sewer
	Registered Land Survey		Drainage & Utility
	Highway RoW Plat		Drainage
	Division Type		Misc Easements
	Lot		

The information on this map is a compilation of Ramsey County Records. THE COUNTY DOES NOT WARRANT OR GUARANTEE THE ACCURACY OF THIS DATA. The County disclaims any liability for any injuries, time delays, or expenses you may suffer if you rely in any manner on the accuracy of this data.

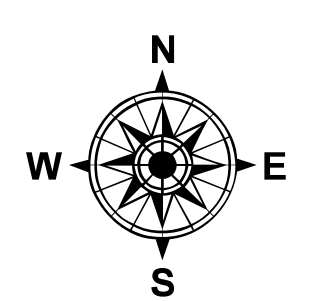
NOTE: This is not an official Ramsey County tax lot map. This is based on the data available in the Geographic Information System, which may vary from tax data officially recorded in the Tax System. For an official tax map, please contact the Office of Property Records and Revenue.

Produced by Information Services Enterprise GIS Division
RCGISMetaData@Co.Ramsey.MN.US

651-266-2000
AskPropertyTaxandRecords@co.ramsey.mn.us

Section 27
Ramsey County

Aerial Imagery Date: March 11 - April 4, 2024



N273023
1/3/2025