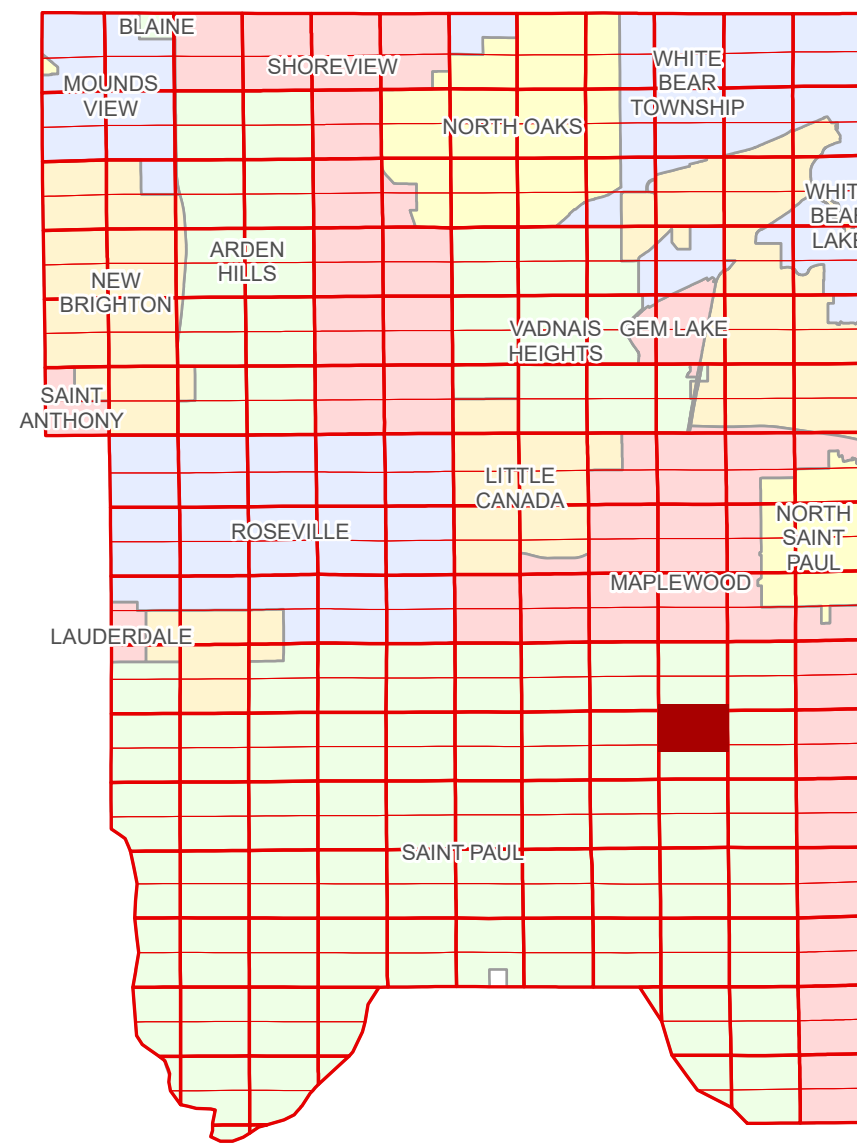


N Half
Section 27
T 29 N
R 22 W

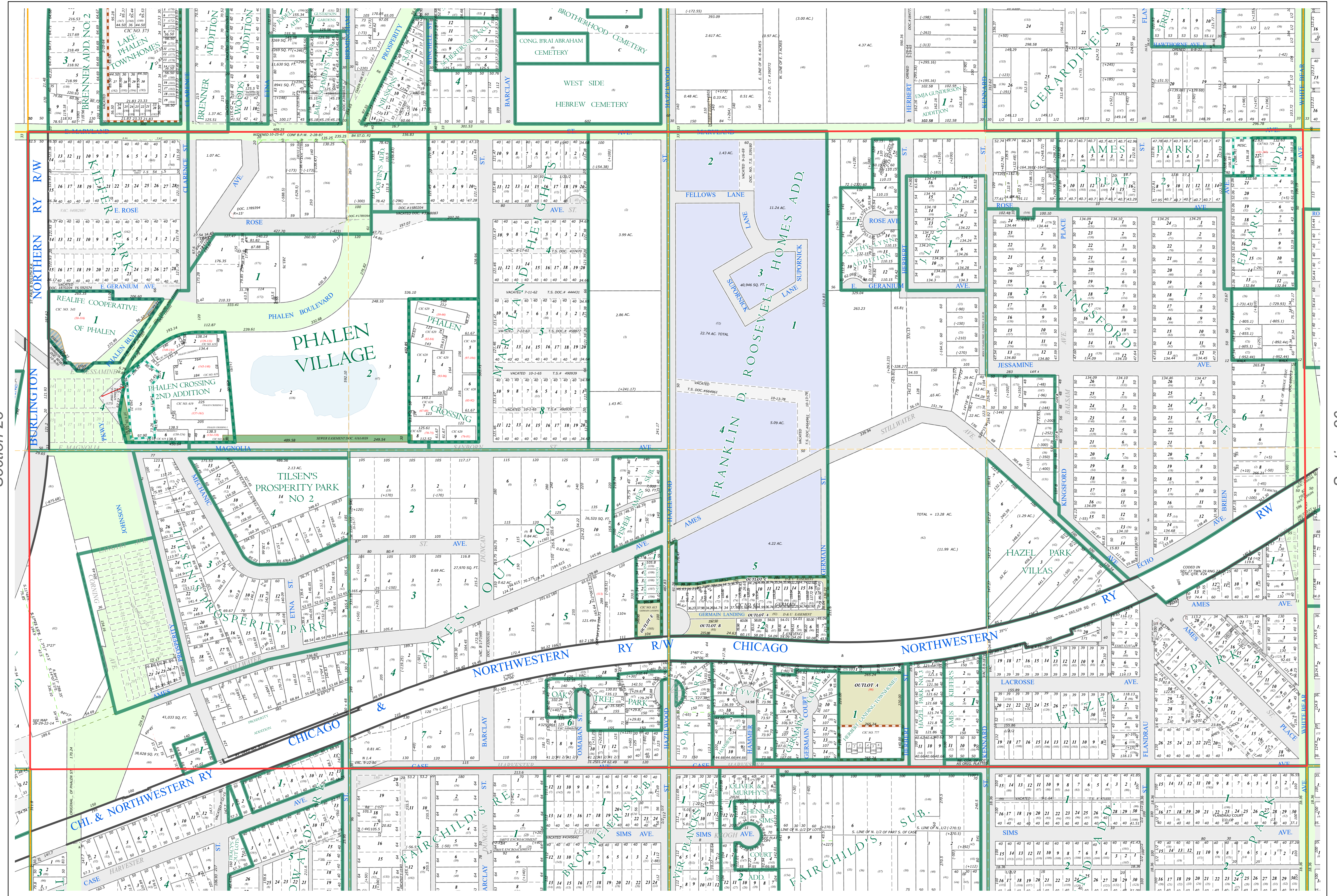
Ramsey County Minnesota Parcel Map

Ramsey County
Section 22



Ramsey County
Section 28

Ramsey County
Section 26



Legend

Section	Metes & Bounds
Quarter	Tax Parcel Type
Quarter Quarter	Personal Property
County Right of Way	State Assessed Property
Municipal Right of Way	Real Property
Subdivision Type	Easement Type
Subdivision Plat	Private Driveway
Planned Community	Utility, Storm & Sanitary Sewer
Cooperative	Drainage & Utility
Condominium	Misc Easements
Division Type	
Lot	
Other	
Outlot	

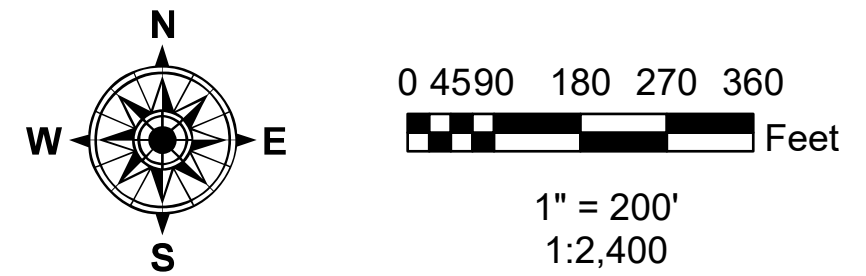
The information on this map is a compilation of Ramsey County Records. THE COUNTY DOES NOT WARRANT OR GUARANTEE THE ACCURACY OF THIS DATA. The County disclaims any liability for any injuries, time delays, or expenses you may suffer if you rely in any manner on the accuracy of this data.

NOTE: This is not an official Ramsey County tax lot map. This is based on the data available in the Geographic Information System, which may vary from tax data officially recorded in the Tax System. For an official tax map, please contact the Office of Property Records and Revenue.

Produced by Information Services Enterprise GIS Division
RCGISMetaData@Co.Ramsey.MN.US

651-266-2000
AskPropertyTaxandRecords@co.ramsey.mn.us

Section 27
Ramsey County



N272922
1/3/2025