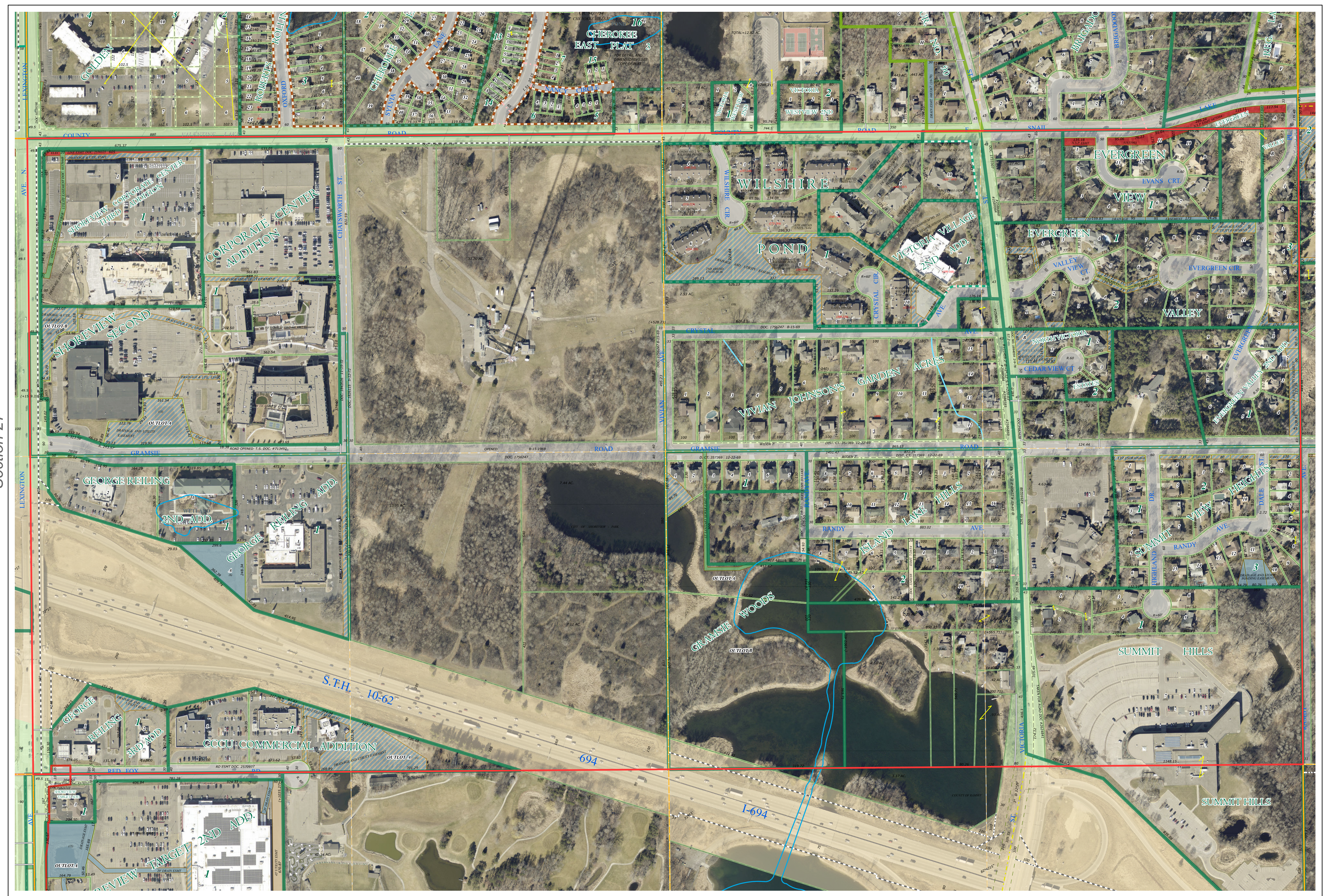
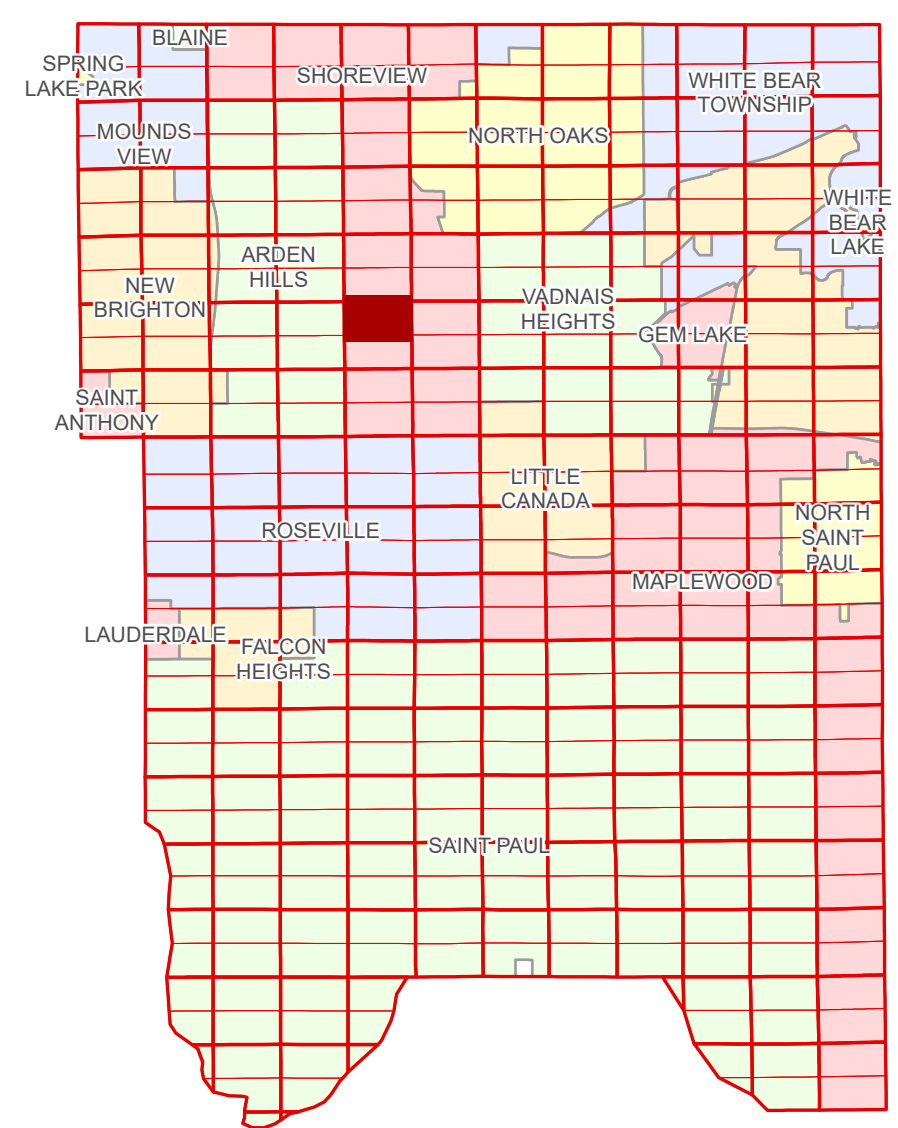


Ramsey County Minnesota Parcel Map

N Half
Section 26
T 30 N
R 23 W

Ramsey County
Section 23



Ramsey County
Section 27

Section 25
Ramsey County

Legend

Section	Metes & Bounds
Quarter	Tax Parcel Type
Quarter Quarter	Real Property
Federal Right of Way	Easement Type
County Right of Way	Parking
Municipal Right of Way	Private Access
Subdivision Type	Utility, Electric
Subdivision Plat	Utility, Storm & Sanitary Sewer
Registered Land Survey	Utility, Unidentified
Highway RoW Plat	Drainage & Utility
Condominium	Drainage
Division Type	
Lot	

The information on this map is a compilation of Ramsey County Records. THE COUNTY DOES NOT WARRANT OR GUARANTEE THE ACCURACY OF THIS DATA. The County disclaims any liability for any injuries, time delays, or expenses you may suffer if you rely in any manner on the accuracy of this data.

Produced by Information Services Enterprise GIS Division
RCGISMetaData@Co.Ramsey.MN.US

NOTE: This is not an official Ramsey County tax lot map. This is based on the data available in the Geographic Information System, which may vary from tax data officially recorded in the Tax System. For an official tax map, please contact the Office of Property Records and Revenue.

651-266-2000
AskPropertyTaxandRecords@co.ramsey.mn.us

Section 26
Ramsey County

Aerial Imagery Date: March 11 - April 4, 2024



N263023
1/3/2025