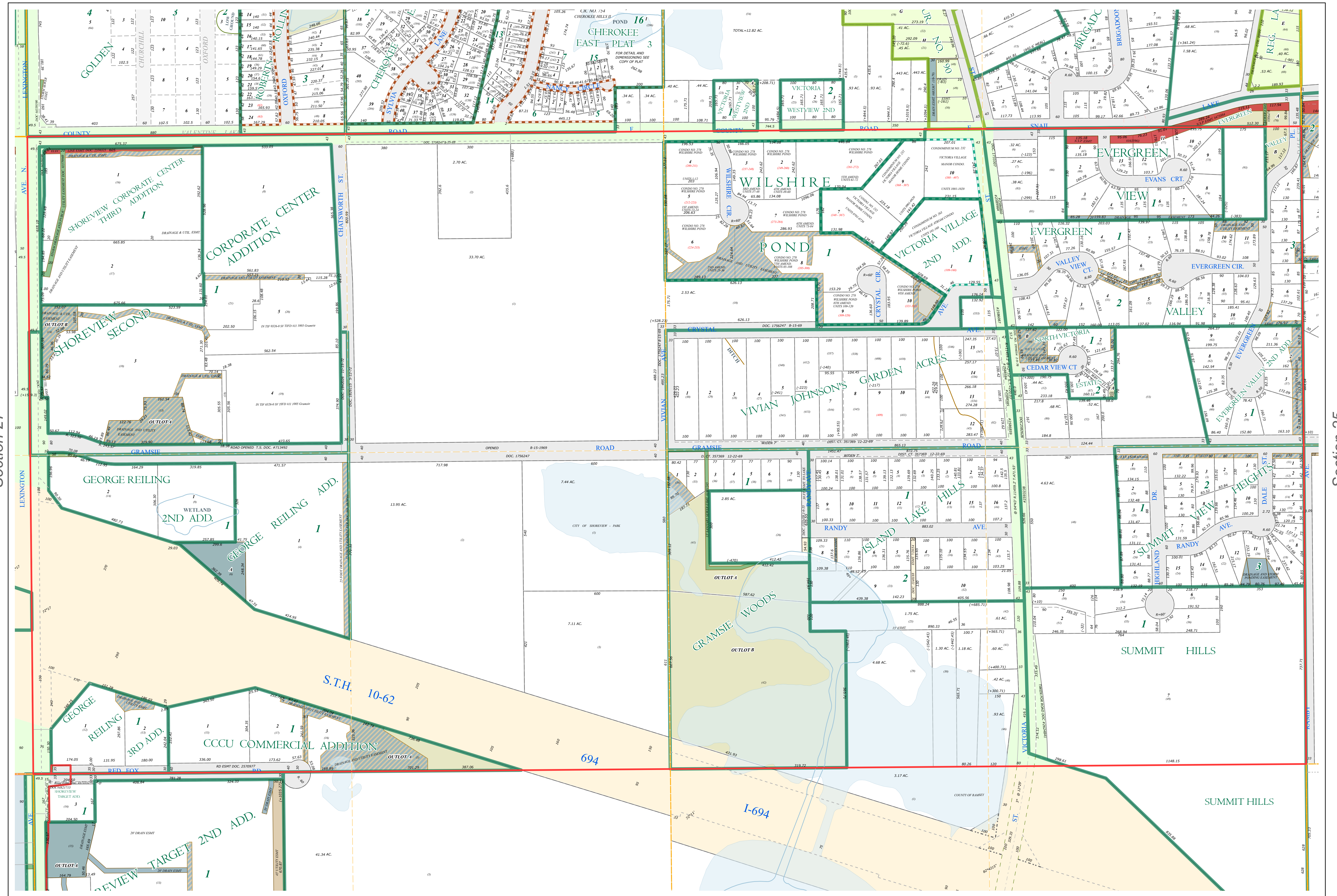
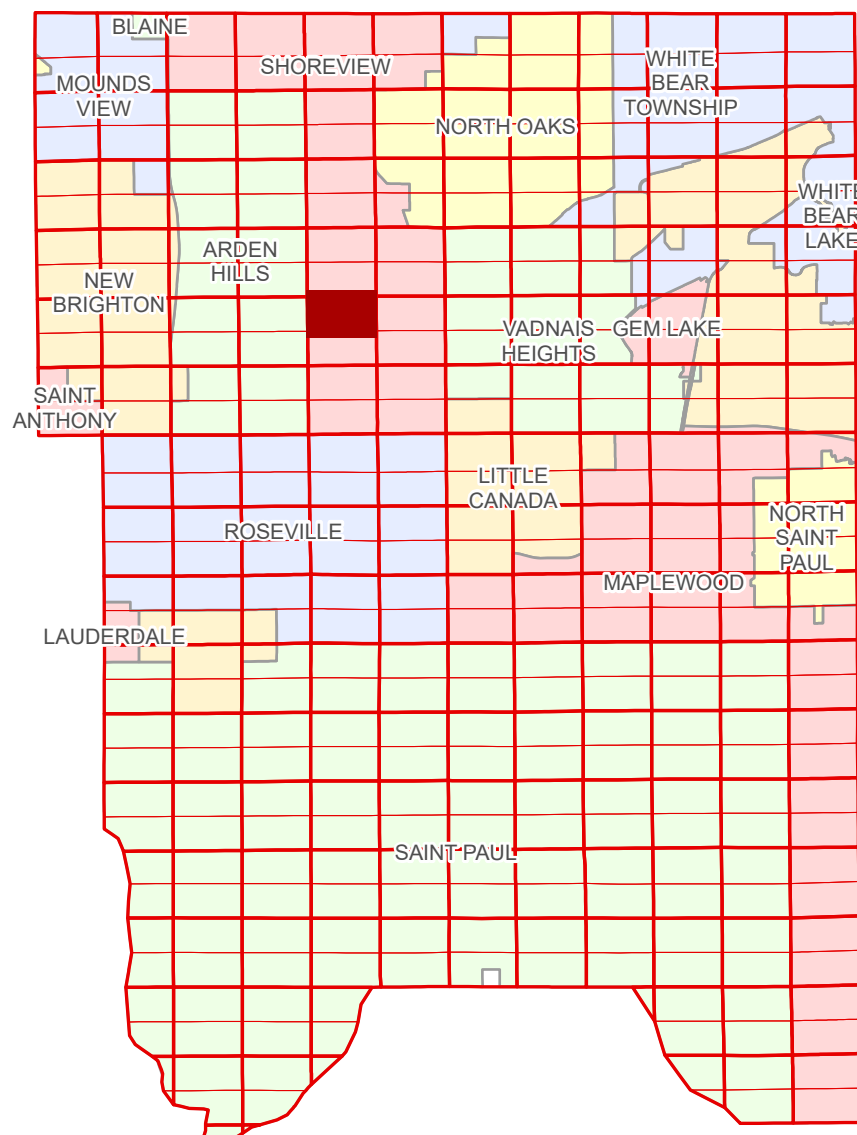


N Half  
Section 26  
T 30 N  
R 23 W

# Ramsey County Minnesota Parcel Map

Ramsey County  
Section 23



Ramsey County  
Section 27

Section 25  
Ramsey County

**Legend**

	Section		Metes & Bounds
	Quarter		Tax Parcel Type
	Quarter Quarter		Real Property
	Federal Right of Way		Easement Type
	County Right of Way		Parking
	Municipal Right of Way		Private Access
	Subdivision Type		Utility, Electric
	Subdivision Plat		Utility, Storm & Sanitary Sewer
	Registered Land Survey		Utility, Unidentified
	Highway RoW Plat		Drainage & Utility
	Condominium		Drainage
	Division Type		
	Lot		
	Outlot		

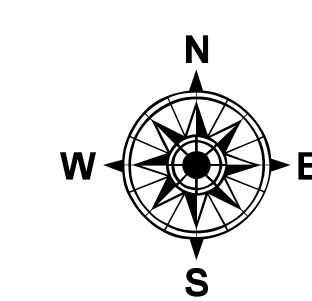
The information on this map is a compilation of Ramsey County Records. THE COUNTY DOES NOT WARRANT OR GUARANTEE THE ACCURACY OF THIS DATA. The County disclaims any liability for any injuries, time delays, or expenses you may suffer if you rely in any manner on the accuracy of this data.

Produced by Information Services Enterprise GIS Division  
RCGISMetaData@Co.Ramsey.MN.US

NOTE: This is not an official Ramsey County tax lot map. This is based on the data available in the Geographic Information System, which may vary from tax data officially recorded in the Tax System. For an official tax map, please contact the Office of Property Records and Revenue.

651-266-2000  
AskPropertyTaxandRecords@co.ramsey.mn.us

Section 26  
Ramsey County



0 450 180 270 360  
Feet

1" = 200'

1:2,400

N263023

1/3/2025