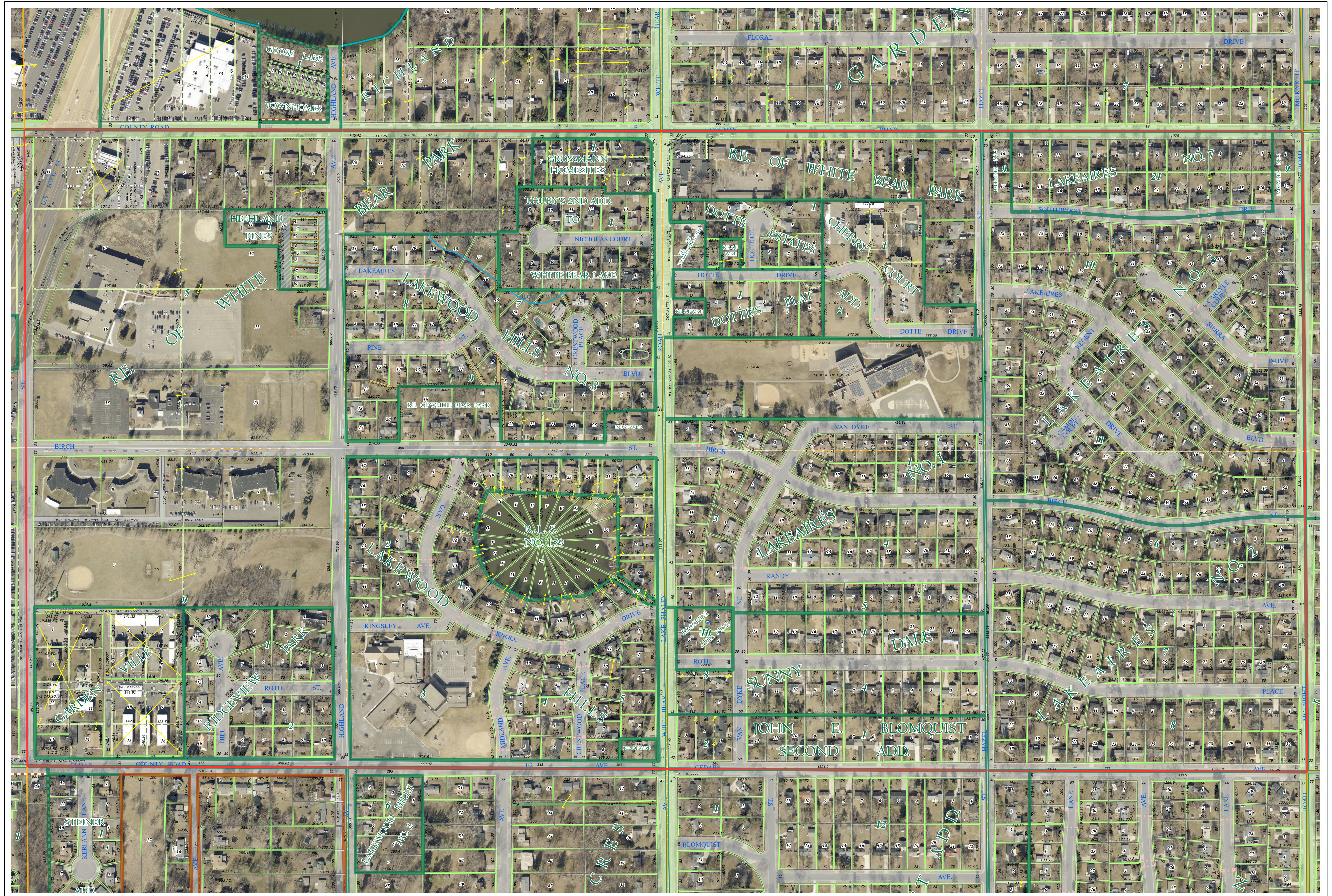
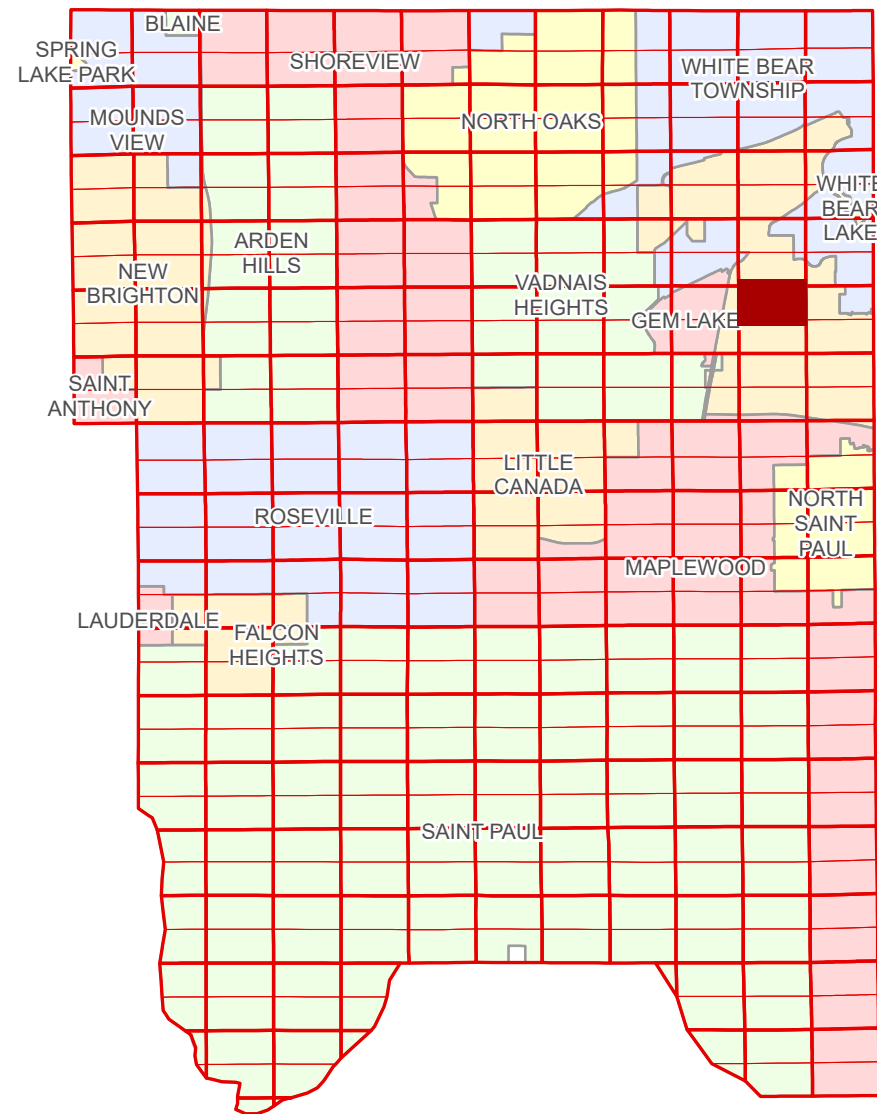


N Half
Section 26
T 30 N
R 22 W

Ramsey County Minnesota Parcel Map

Ramsey County
Section 23



Ramsey County
Section 27

Section 25
Ramsey County

Legend

Section	Personal Property
Quarter	Real Property
Quarter Quarter	Easement Type
Federal Right of Way	Private Access
County Right of Way	Private Driveway
Municipal Right of Way	Utility, Storm & Sanitary Sewer
Subdivision Type	Utility, Water
Subdivision Plat	Utility, Unidentified
Registered Land Survey	Drainage & Utility
Division Type	Drainage
Lot	
Metes & Bounds	

The information on this map is a compilation of Ramsey County Records. THE COUNTY DOES NOT WARRANT OR GUARANTEE THE ACCURACY OF THIS DATA. The County disclaims any liability for any injuries, time delays, or expenses you may suffer if you rely in any manner on the accuracy of this data.

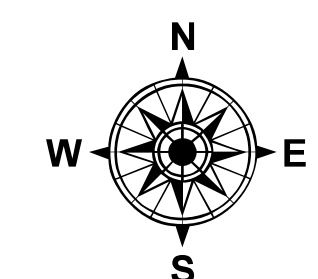
Produced by Information Services Enterprise GIS Division
RCGISMetaData@Co.Ramsey.MN.US

NOTE: This is not an official Ramsey County tax lot map. This is based on the data available in the Geographic Information System, which may vary from tax data officially recorded in the Tax System. For an official tax map, please contact the Office of Property Records and Revenue.

651-266-2000
AskPropertyTaxandRecords@co.ramsey.mn.us

Section 26
Ramsey County

Aerial Imagery Date: March 11 - April 4, 2024



0 4590 180 270 360 Feet

1" = 200'
1:2,400

N263022

1/3/2025