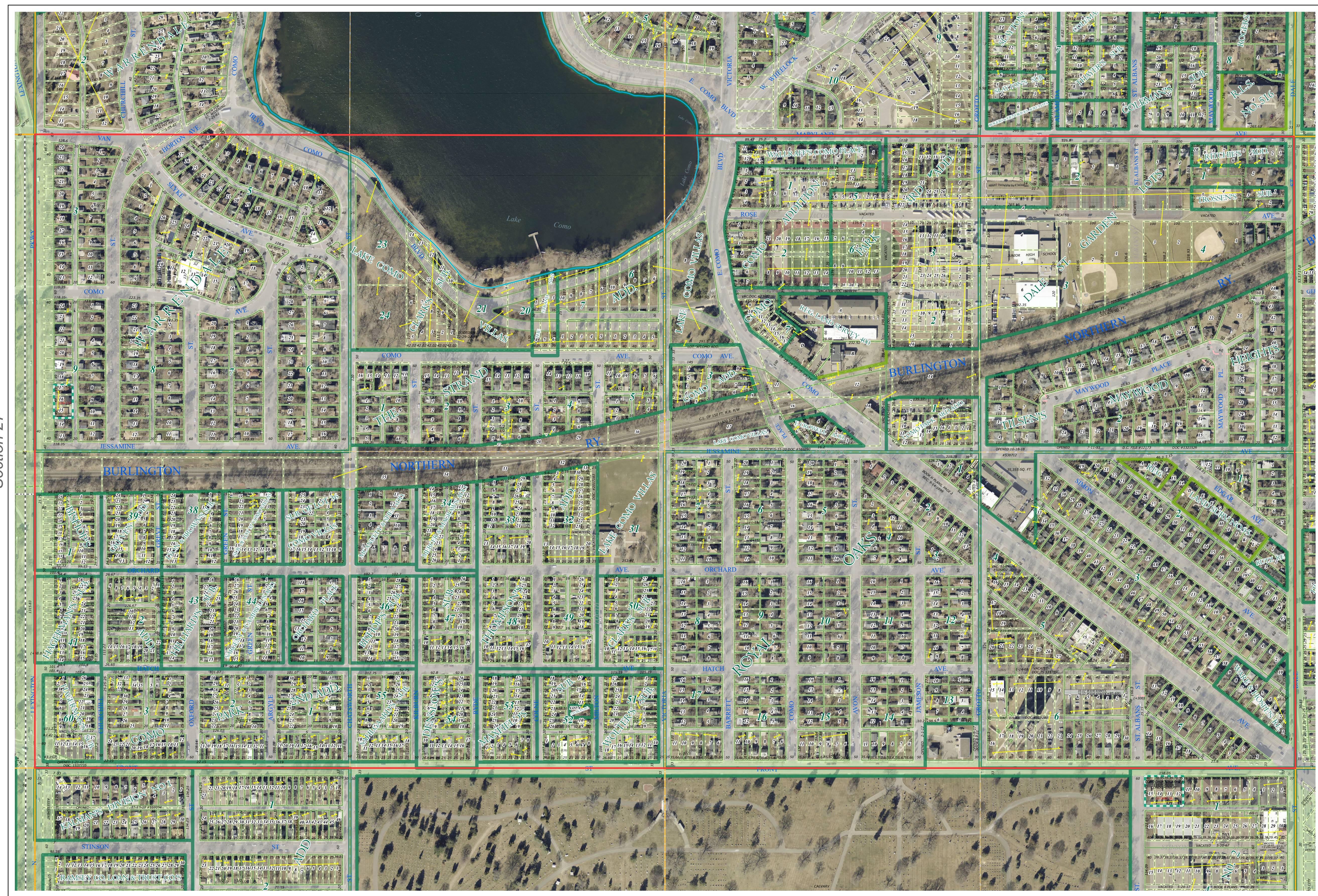
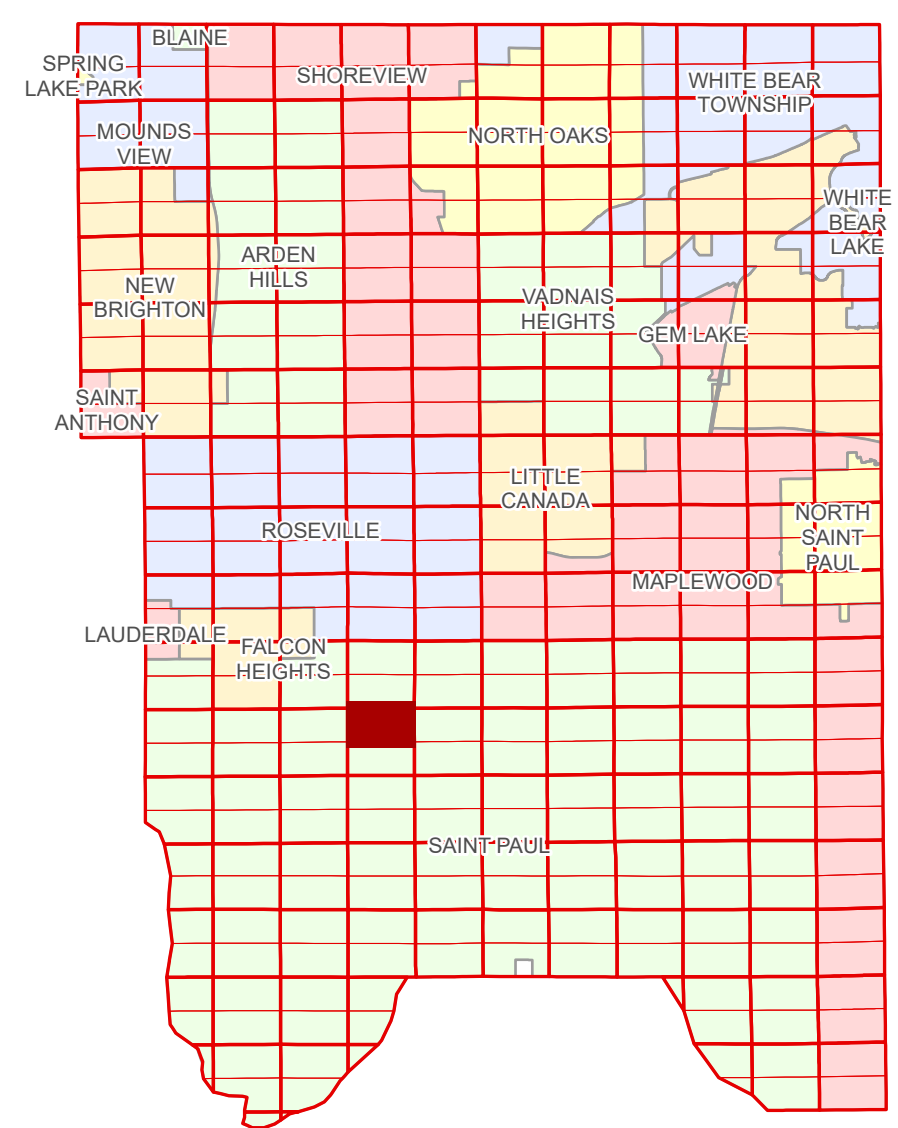


Ramsey County Minnesota Parcel Map

N Half
Section 26
T 29 N
R 23 W

Ramsey County
Section 23



Ramsey County
Section 27

Section 25
Ramsey County

Legend			
	Section		Division Type
	Quarter		Lot
	Quarter Quarter		Metes & Bounds
	County Right of Way		Tax Parcel Type
	Municipal Right of Way		Personal Property
	Subdivision Type		State Assessed Property
	Subdivision Plat		Real Property
	Registered Land Survey		Easement Type
	Condominium		Private Access
			Private Driveway

Aerial Imagery Date: March 11 - April 4, 2024



The information on this map is a compilation of Ramsey County Records. THE COUNTY DOES NOT WARRANT OR GUARANTEE THE ACCURACY OF THIS DATA. The County disclaims any liability for any injuries, time delays, or expenses you may suffer if you rely in any manner on the accuracy of this data.

Produced by Information Services Enterprise GIS Division
RCGISMetaData@Co.Ramsey.MN.US

NOTE: This is not an official Ramsey County tax lot map. This is based on the data available in the Geographic Information System, which may vary from tax data officially recorded in the Tax System. For an official tax map, please contact the Office of Property Records and Revenue.

651-266-2000
AskPropertyTaxandRecords@co.ramsey.mn.us

Section 26
Ramsey County



0 4590 180 270 360 Feet
1" = 200'
1:2,400

N262923
1/3/2025