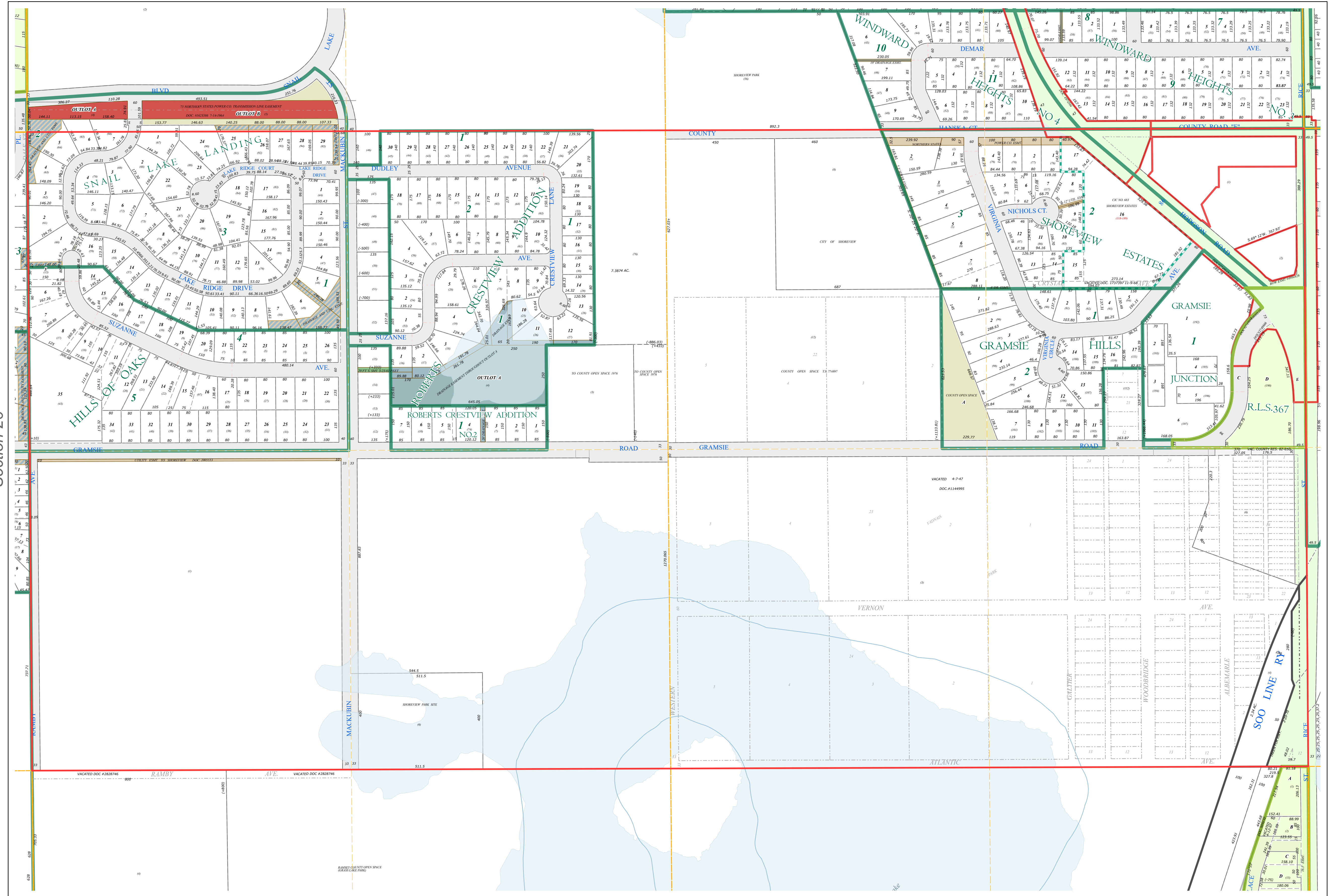
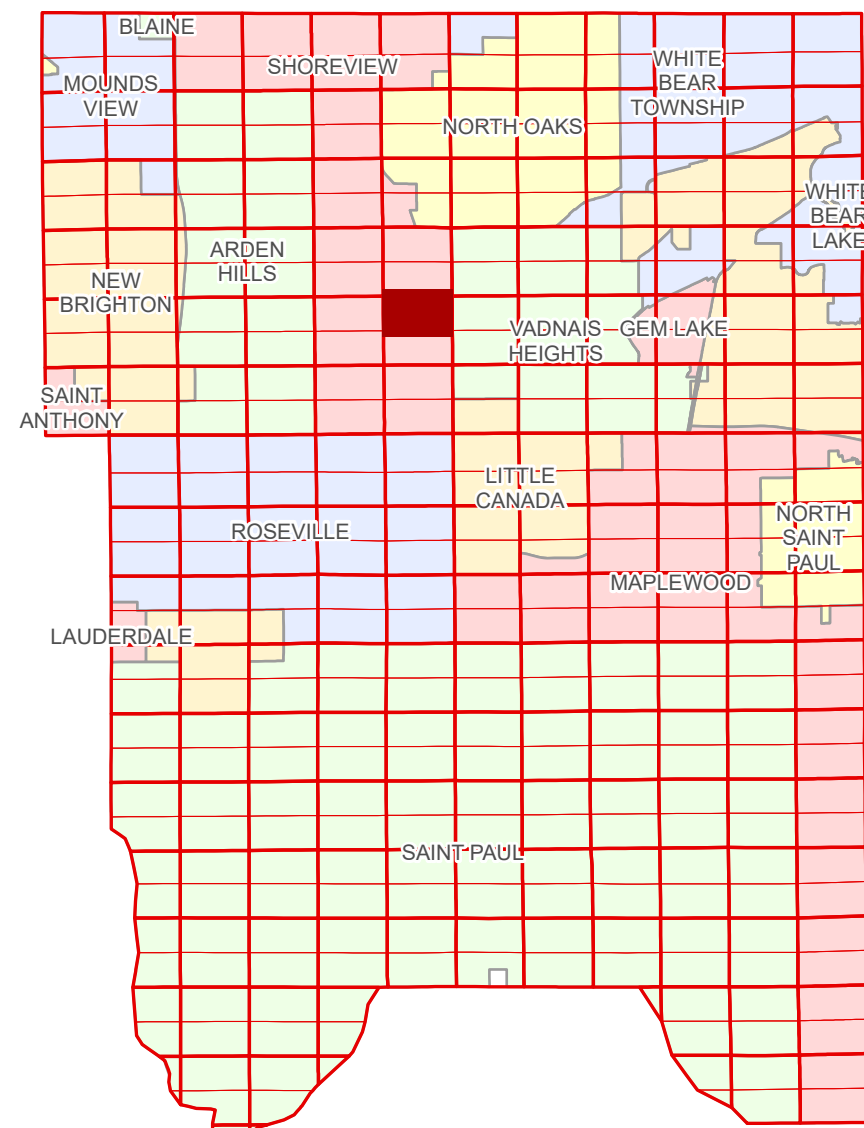


Ramsey County Minnesota Parcel Map

N Half
Section 25
T 30 N
R 23 W

Ramsey County
Section 24



Ramsey County
Section 26

Section 30
Ramsey County

Legend			
	Section		Division Type
	Quarter		Lot
	Quarter Quarter		Outlot
	County Right of Way		Tract
	Municipal Right of Way		Metes & Bounds
	Subdivision Type		Tax Parcel Type
	Subdivision Plat		State Assessed Property
	Registered Land Survey		Real Property
	Highway RoW Plat		Easement Type
	Condominium		Utility, Storm & Sanitary Sewer
			Utility, Unidentified
			Drainage & Utility
			Drainage

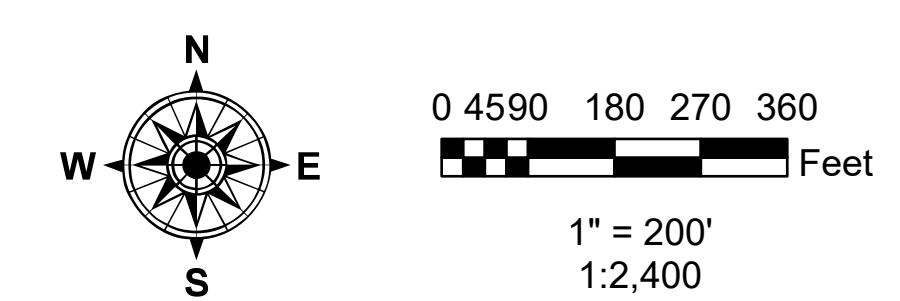
The information on this map is a compilation of Ramsey County Records. THE COUNTY DOES NOT WARRANT OR GUARANTEE THE ACCURACY OF THIS DATA. The County disclaims any liability for any injuries, time delays, or expenses you may suffer if you rely in any manner on the accuracy of this data.

Produced by Information Services Enterprise GIS Division
RCGISMetaData@Co.Ramsey.MN.US

NOTE: This is not an official Ramsey County tax lot map. This is based on the data available in the Geographic Information System, which may vary from tax data officially recorded in the Tax System. For an official tax map, please contact the Office of Property Records and Revenue.

651-266-2000
AskPropertyTaxandRecords@co.ramsey.mn.us

Section 25
Ramsey County



N253023
1/3/2025