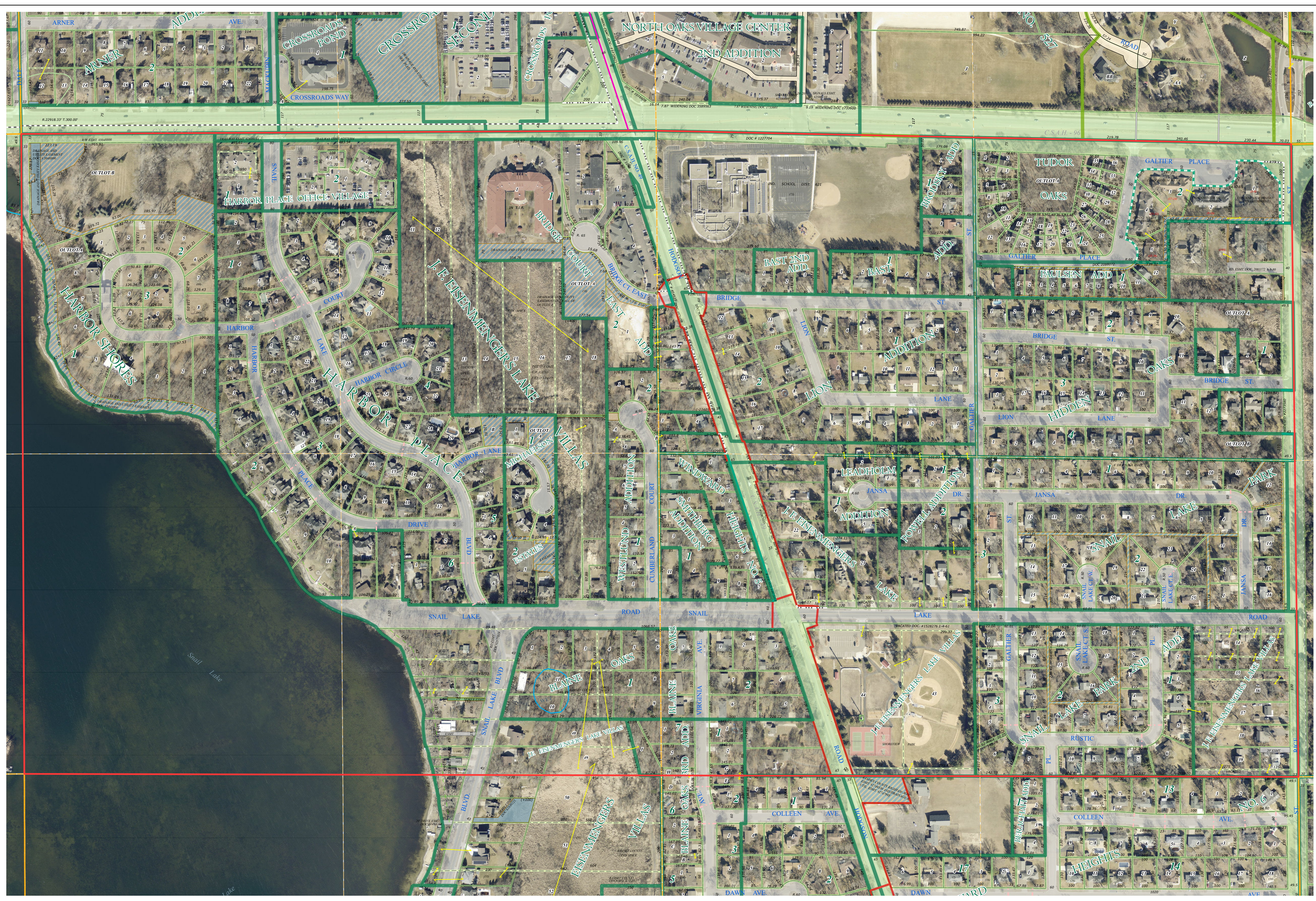
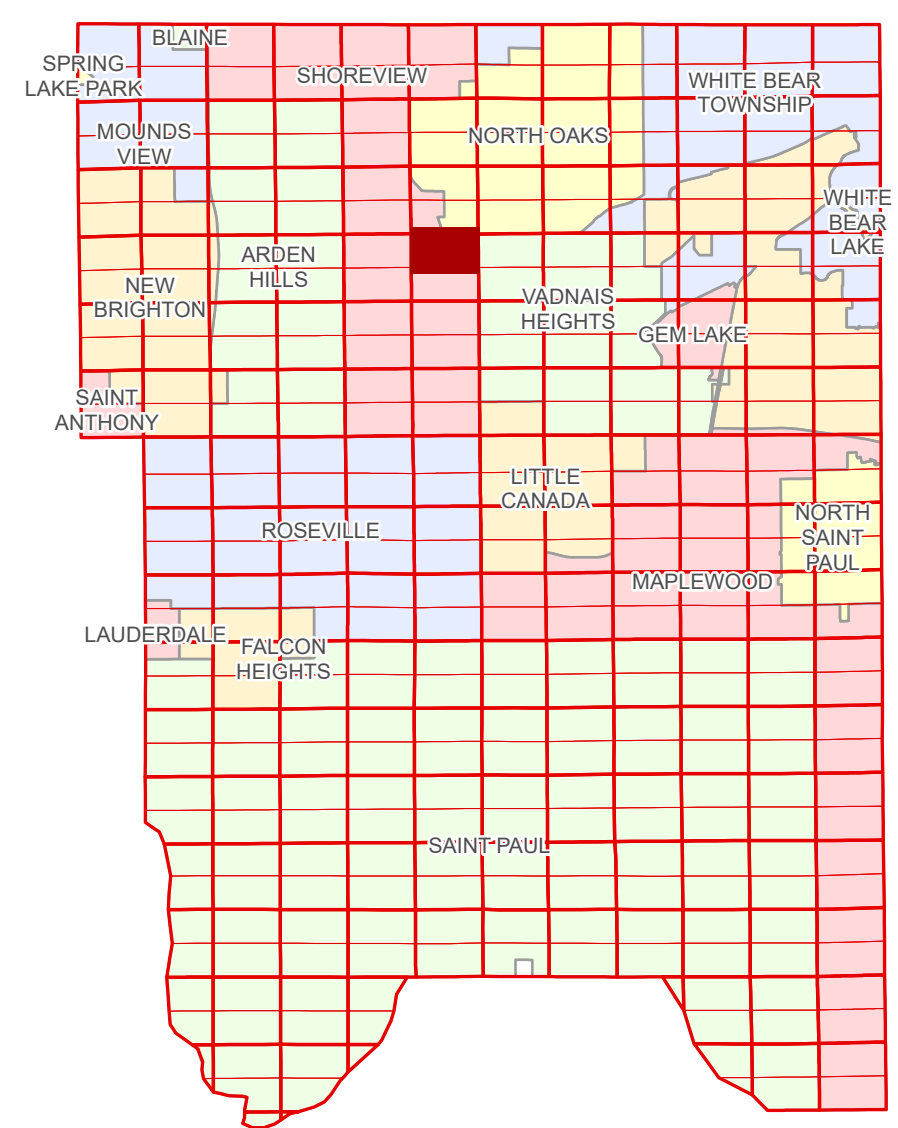


Ramsey County Minnesota Parcel Map

N Half
Section 24
T 30 N
R 23 W

Ramsey County
Section 13



Ramsey County
Section 23

Section 19
Ramsey County

Legend			
	Section		Tax Parcel Type
	Quarter		Personal Property
	Quarter Quarter		Real Property
	County Right of Way		Tax Parcel
	Municipal Right of Way		Easement Type
	Subdivision Type		Pedestrian
	Subdivision Plat		Private Driveway
	Registered Land Survey		Utility, Storm & Sanitary Sewer
	Highway RoW Plat		Utility, Unidentified
	Condominium		Drainage & Utility
	Division Type		Drainage
	Lot		Misc Easements
	Metes & Bounds		

Aerial Imagery Date: March 11 - April 4, 2024



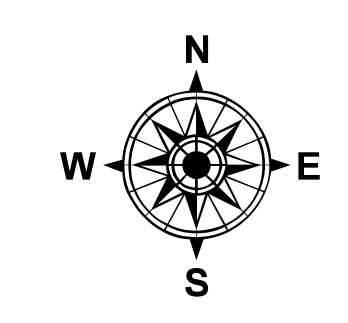
The information on this map is a compilation of Ramsey County Records. THE COUNTY DOES NOT WARRANT OR GUARANTEE THE ACCURACY OF THIS DATA. The County disclaims any liability for any injuries, time delays, or expenses you may suffer if you rely in any manner on the accuracy of this data.

Produced by Information Services Enterprise GIS Division
RCGISMetaData@Co.Ramsey.MN.US

NOTE: This is not an official Ramsey County tax lot map. This is based on the data available in the Geographic Information System, which may vary from tax data officially recorded in the Tax System. For an official tax map, please contact the Office of Property Records and Revenue.

651-266-2000
AskPropertyTaxandRecords@co.ramsey.mn.us

Section 24
Ramsey County



N243023

1/3/2025