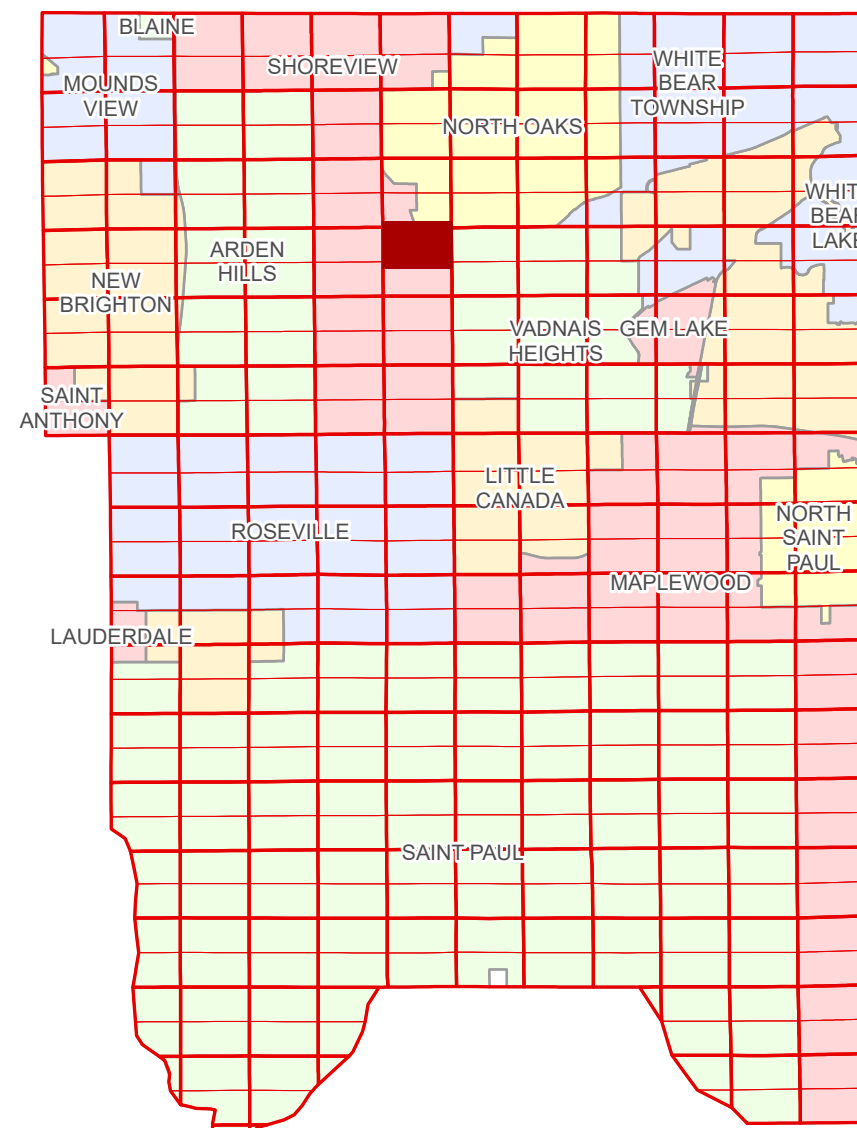


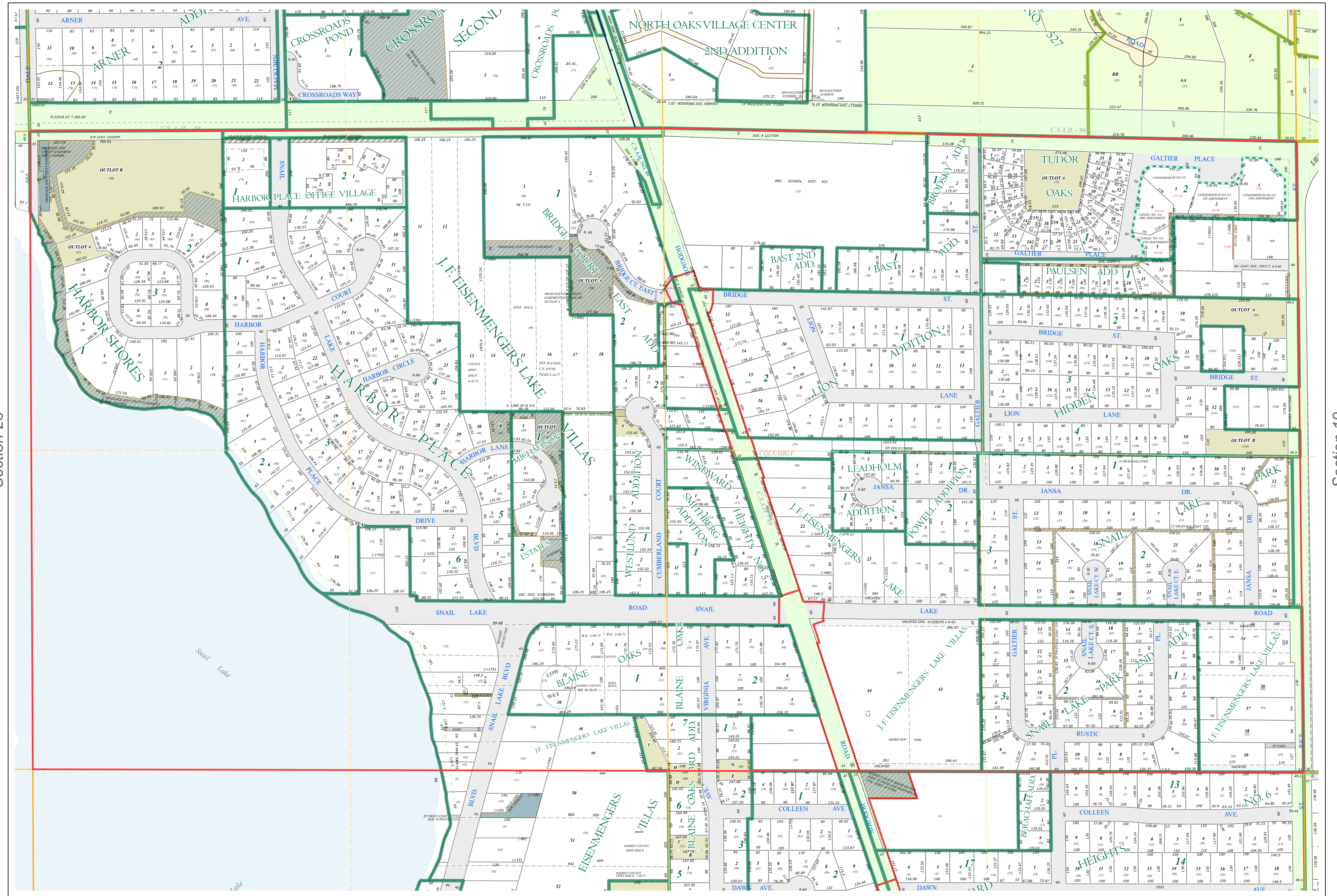
N Half
Section 24
T 30 N
R 23 W

Ramsey County Minnesota Parcel Map

Ramsey County
Section 13



Ramsey County
Section 23



Ramsey County
Section 19

Legend			
	Section		Metes & Bounds
	Quarter		Tax Parcel Type
	Quarter Quarter		Personal Property
	County Right of Way		Real Property
	Municipal Right of Way		Tax Parcel
	Subdivision Type		Easement Type
	Subdivision Plat		Pedestrian
	Registered Land Survey		Private Driveway
	Highway RoW Plat		Utility, Storm & Sanitary Sewer
	Condominium		Utility, Unidentified
	Division Type		Drainage & Utility
	Lot		Drainage
	Outlot		Misc Easements
	Tract		

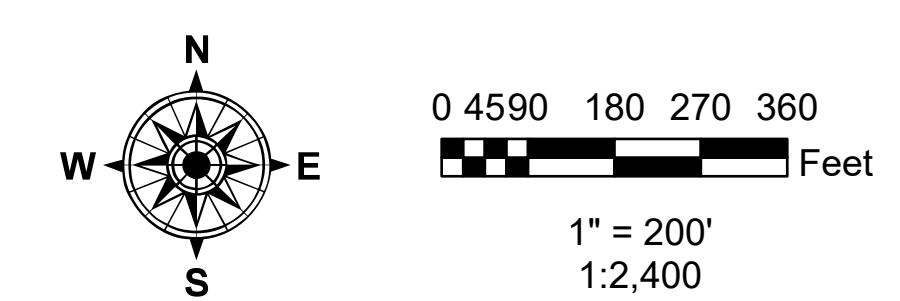
The information on this map is a compilation of Ramsey County Records. THE COUNTY DOES NOT WARRANT OR GUARANTEE THE ACCURACY OF THIS DATA. THE County disclaims any liability for any injuries, time delays, or expenses you may suffer if you rely in any manner on the accuracy of this data.

Produced by Information Services Enterprise GIS Division
RCGISMetaData@Co.Ramsey.MN.US

NOTE: This is not an official Ramsey County tax lot map. This is based on the data available in the Geographic Information System, which may vary from tax data officially recorded in the Tax System. For an official tax map, please contact the Office of Property Records and Revenue.

651-266-2000
AskPropertyTaxandRecords@co.ramsey.mn.us

Section 24
Ramsey County



N243023
1/3/2025