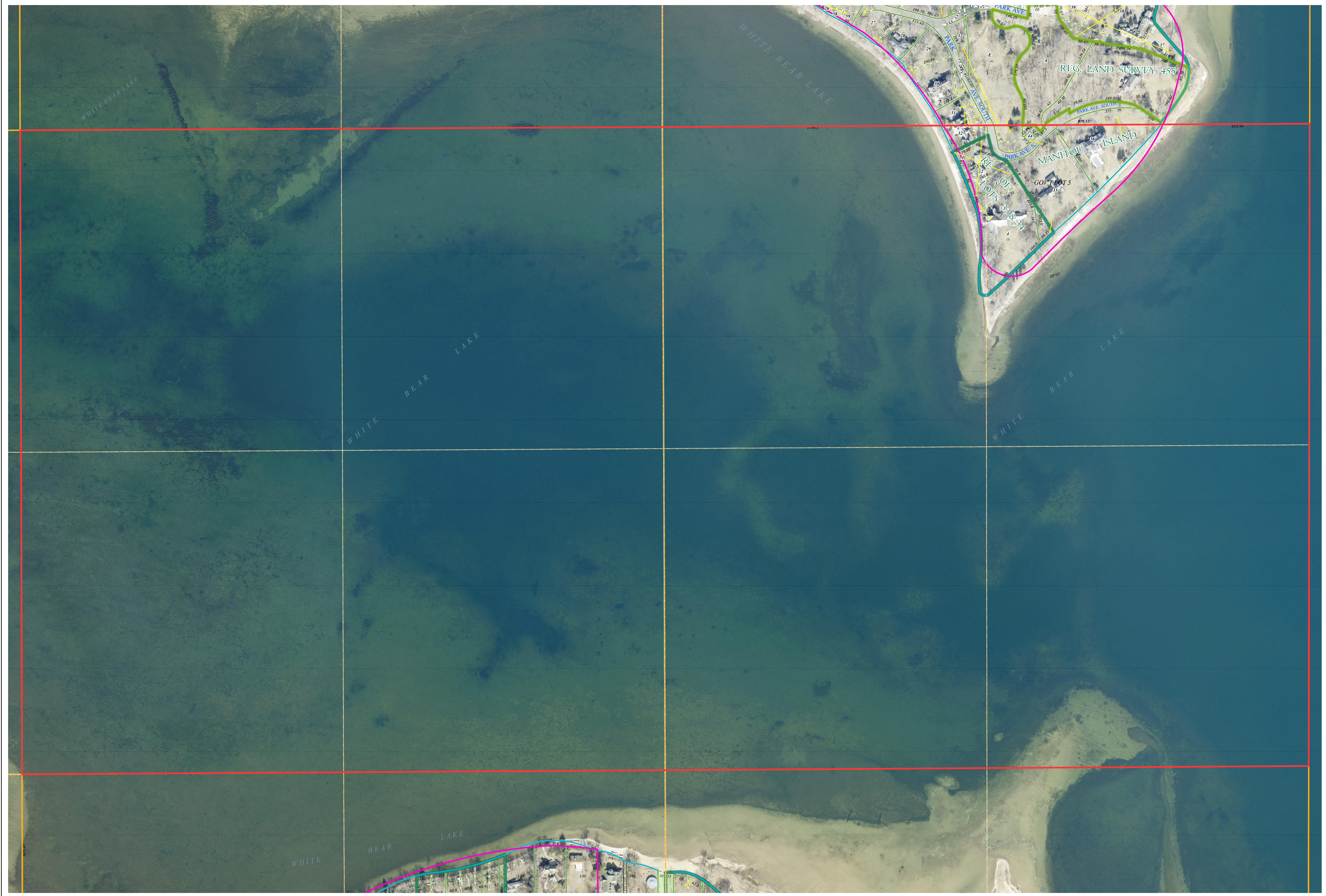
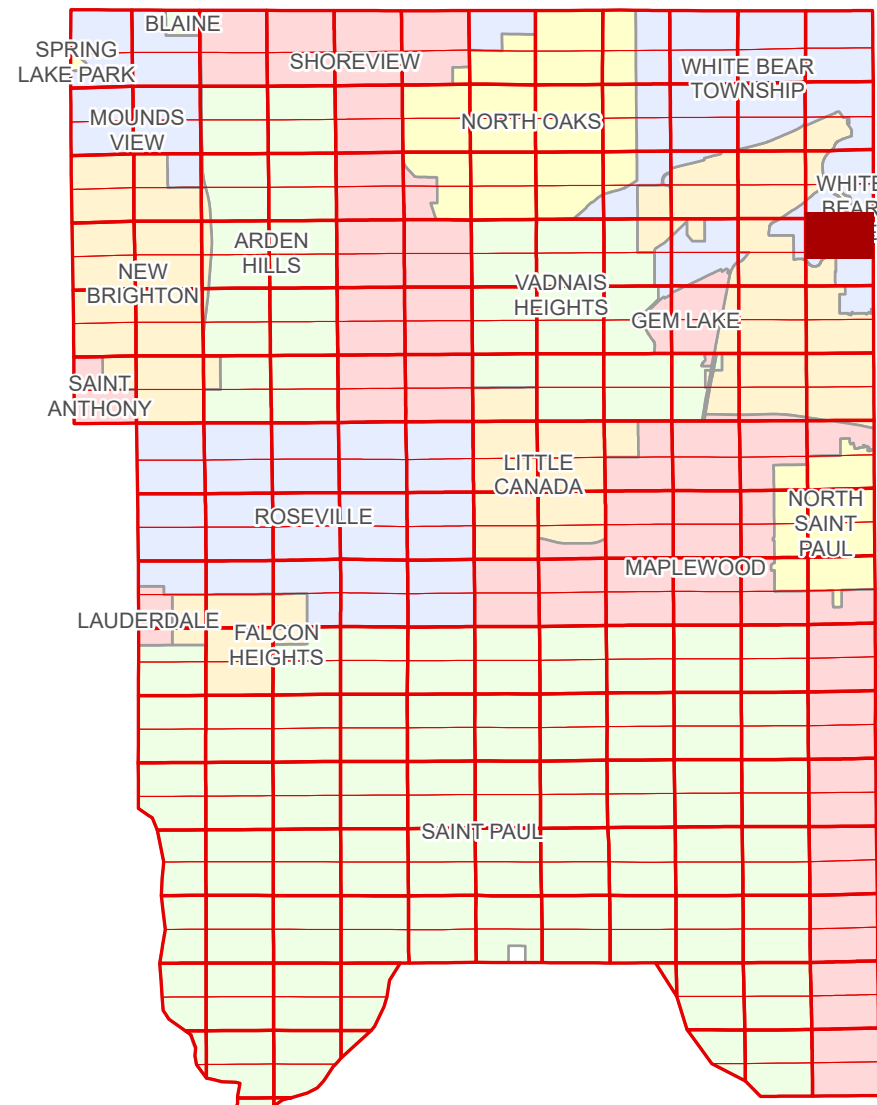


Ramsey County Minnesota Parcel Map

Ramsey County
Section 13

N Half
Section 24
T 30 N
R 22 W



Ramsey County
Section 23

Section 0
Washington County

Legend

Section	Division Type
Quarter	Lot
Quarter Quarter	Metes & Bounds
Municipal Right of Way	Tax Parcel Type
Subdivision Type	Real Property
Subdivision Plat	
Registered Land Survey	

Aerial Imagery Date: March 11 - April 4, 2024



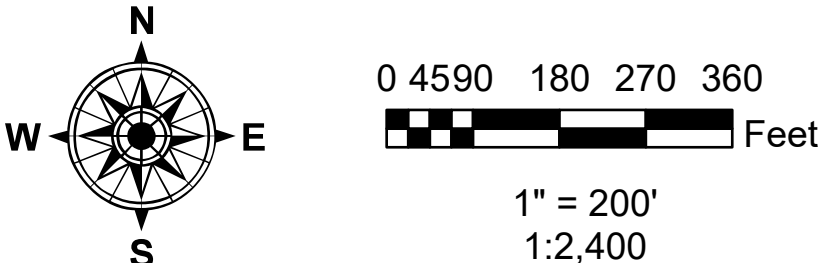
The information on this map is a compilation of Ramsey County Records. THE COUNTY DOES NOT WARRANT OR GUARANTEE THE ACCURACY OF THIS DATA. The County disclaims any liability for any injuries, time delays, or expenses you may suffer if you rely in any manner on the accuracy of this data.

NOTE: This is not an official Ramsey County tax lot map. This is based on the data available in the Geographic Information System, which may vary from tax data officially recorded in the Tax System. For an official tax map, please contact the Office of Property Records and Revenue.

Produced by Information Services Enterprise GIS Division
RCGISMetaData@Co.Ramsey.MN.US

651-266-2000
AskPropertyTaxandRecords@co.ramsey.mn.us

Section 24
Ramsey County



N243022

1/3/2025