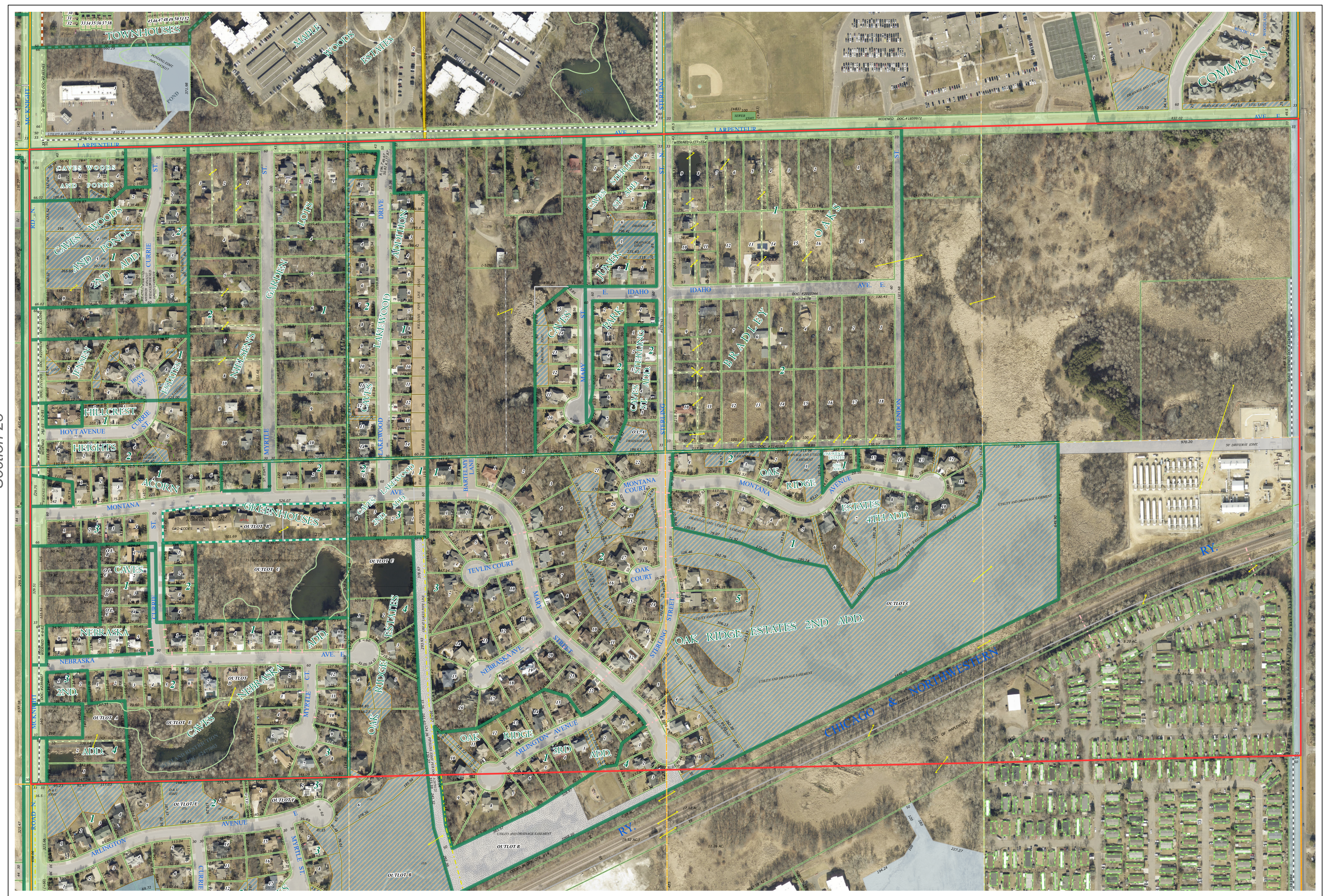
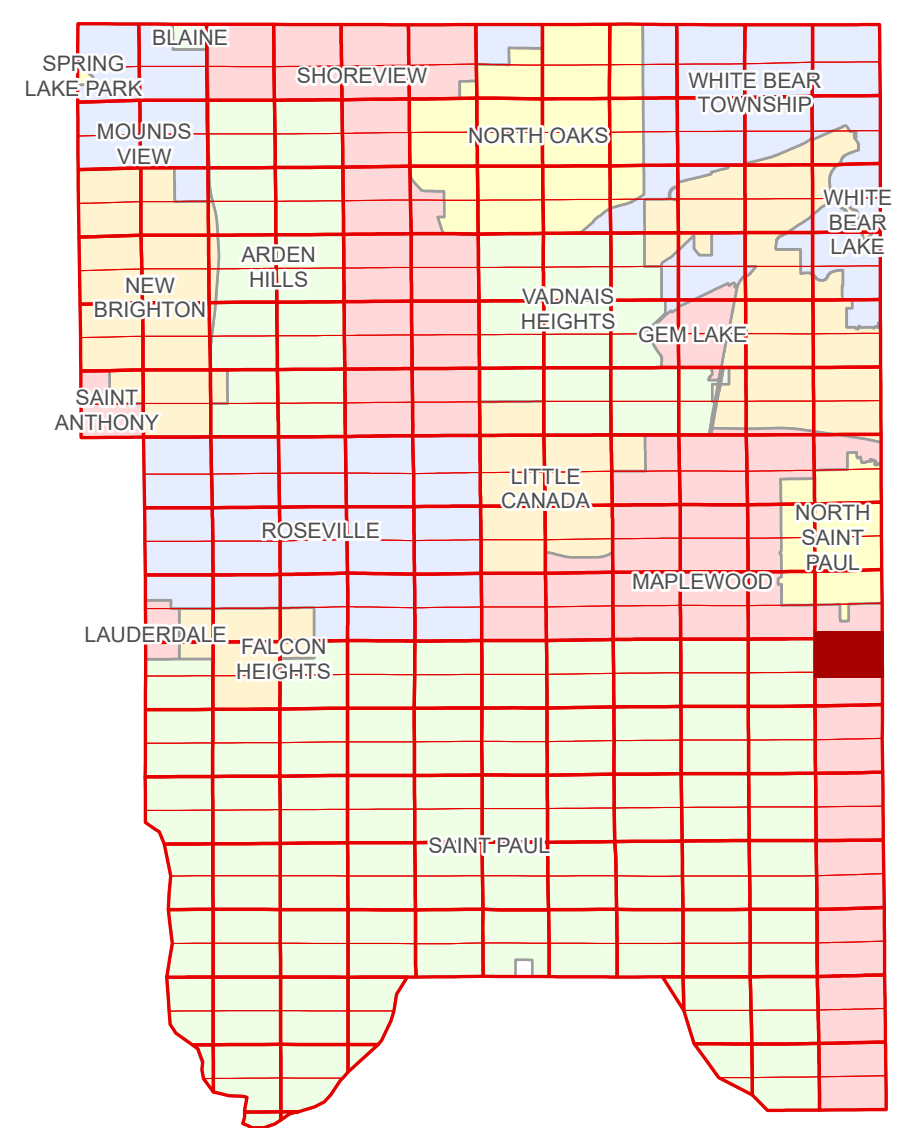


# Ramsey County Minnesota Parcel Map

Ramsey County  
Section 13

N Half  
Section 24  
T 29 N  
R 22 W



Ramsey County  
Section 23

Section 19  
Washington County

**Legend**

- Section
- Quarter
- Quarter Quarter
- State Right of Way
- County Right of Way
- Municipal Right of Way
- Subdivision Type
- Subdivision Plat
- Condominium
- Division Type
- Lot
- Metes & Bounds
- Tax Parcel Type
- State Assessed Property
- Manufactured Home
- Real Property
- Easement Type
- Private Driveway
- Utility, Unidentified
- Drainage & Utility
- Misc Easements

Aerial Imagery Date: March 11 - April 4, 2024

The information on this map is a compilation of Ramsey County Records. THE COUNTY DOES NOT WARRANT OR GUARANTEE THE ACCURACY OF THIS DATA. The County disclaims any liability for any injuries, time delays, or expenses you may suffer if you rely in any manner on the accuracy of this data.

NOTE: This is not an official Ramsey County tax lot map. This is based on the data available in the Geographic Information System, which may vary from tax data officially recorded in the Tax System. For an official tax map, please contact the Office of Property Records and Revenue.

Produced by Information Services Enterprise GIS Division  
RCGISMetaData@Co.Ramsey.MN.US

651-266-2000  
AskPropertyTaxandRecords@co.ramsey.mn.us

Section 24  
Ramsey County



N242922  
1/3/2025