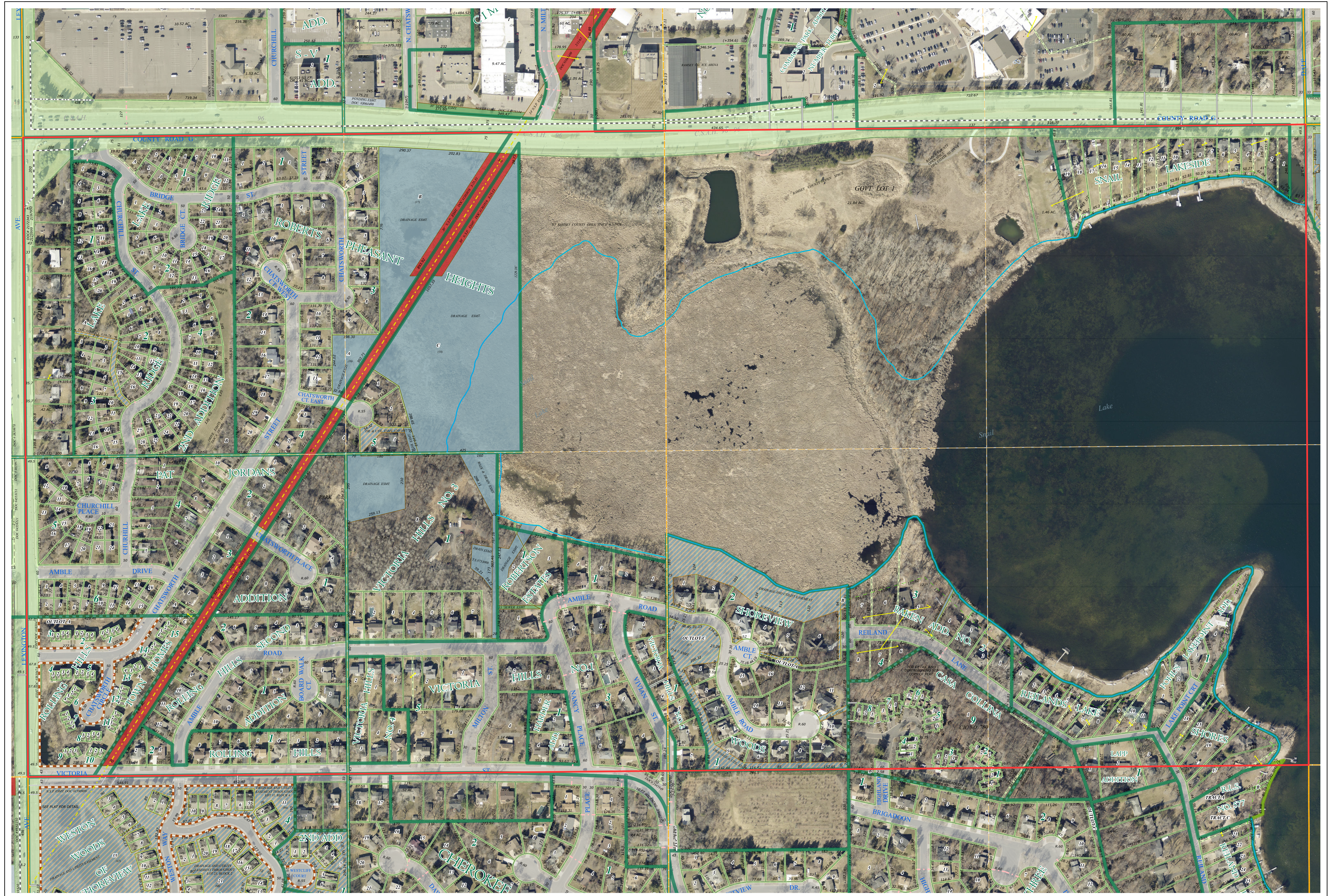
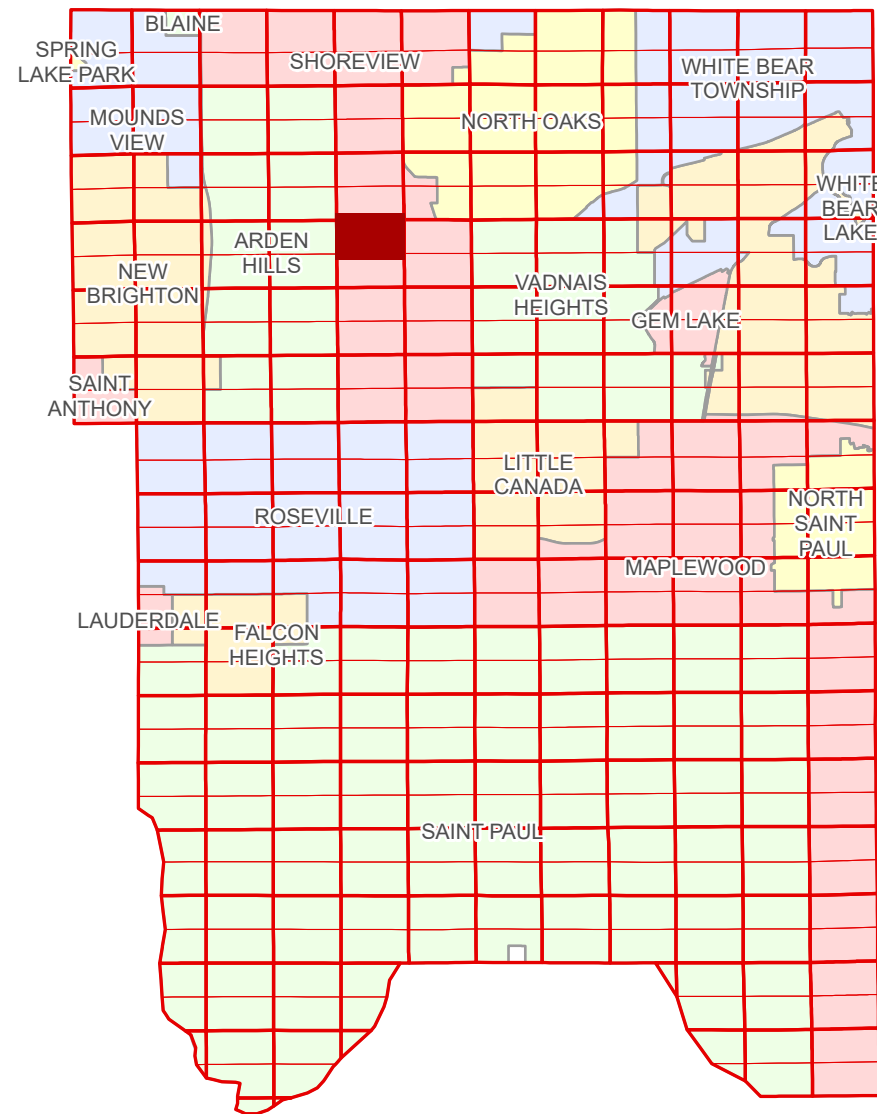


Ramsey County Minnesota Parcel Map

Ramsey County
Section 14

N Half
Section 23
T 30 N
R 23 W



Legend

Section	Metes & Bounds
Quarter	Tax Parcel Type
Quarter Quarter	Real Property
County Right of Way	Easement Type
Municipal Right of Way	Private Driveway
Subdivision Type	Utility, Electric
Subdivision Plat	Utility, Storm & Sanitary Sewer
Registered Land Survey	Utility, Unidentified
Planned Community	Drainage & Utility
Division Type	Drainage
Lot	

The information on this map is a compilation of Ramsey County Records. THE COUNTY DOES NOT WARRANT OR GUARANTEE THE ACCURACY OF THIS DATA. The County disclaims any liability for any injuries, time delays, or expenses you may suffer if you rely in any manner on the accuracy of this data.

NOTE: This is not an official Ramsey County tax lot map. This is based on the data available in the Geographic Information System, which may vary from tax data officially recorded in the Tax System. For an official tax map, please contact the Office of Property Records and Revenue.

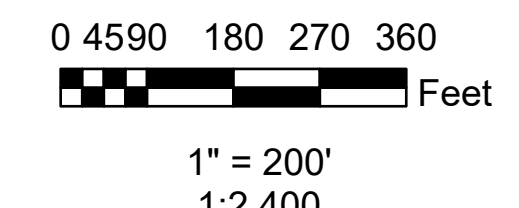
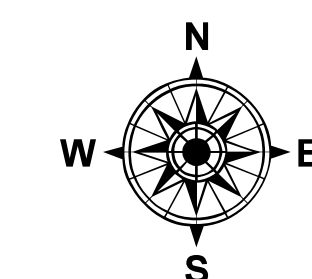
Produced by Information Services Enterprise GIS Division
RCGISMetaData@Co.Ramsey.MN.US

651-266-2000
AskPropertyTaxandRecords@co.ramsey.mn.us

Aerial Imagery Date: March 11 - April 4, 2024



Section 23
Ramsey County



N233023

1/3/2025