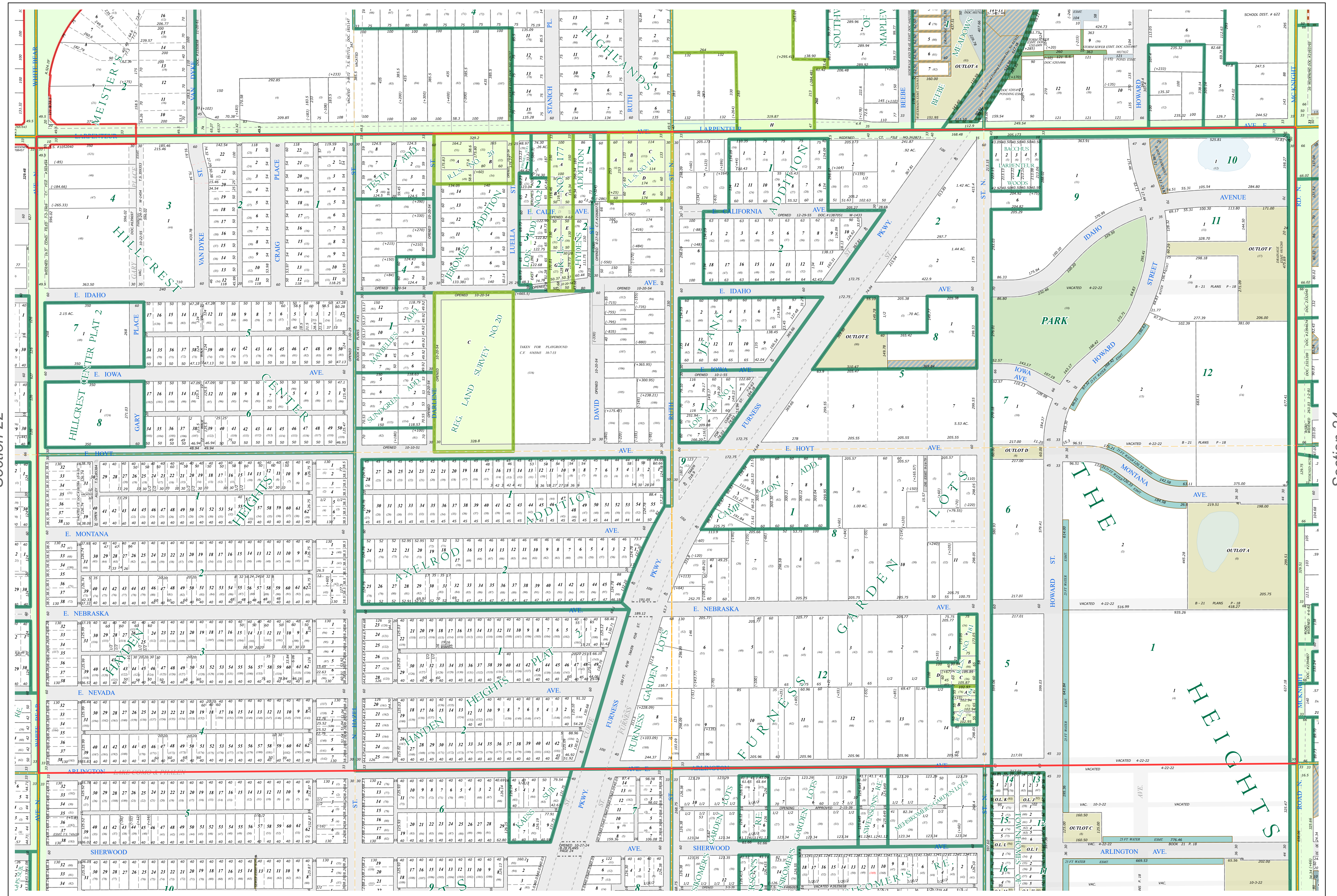
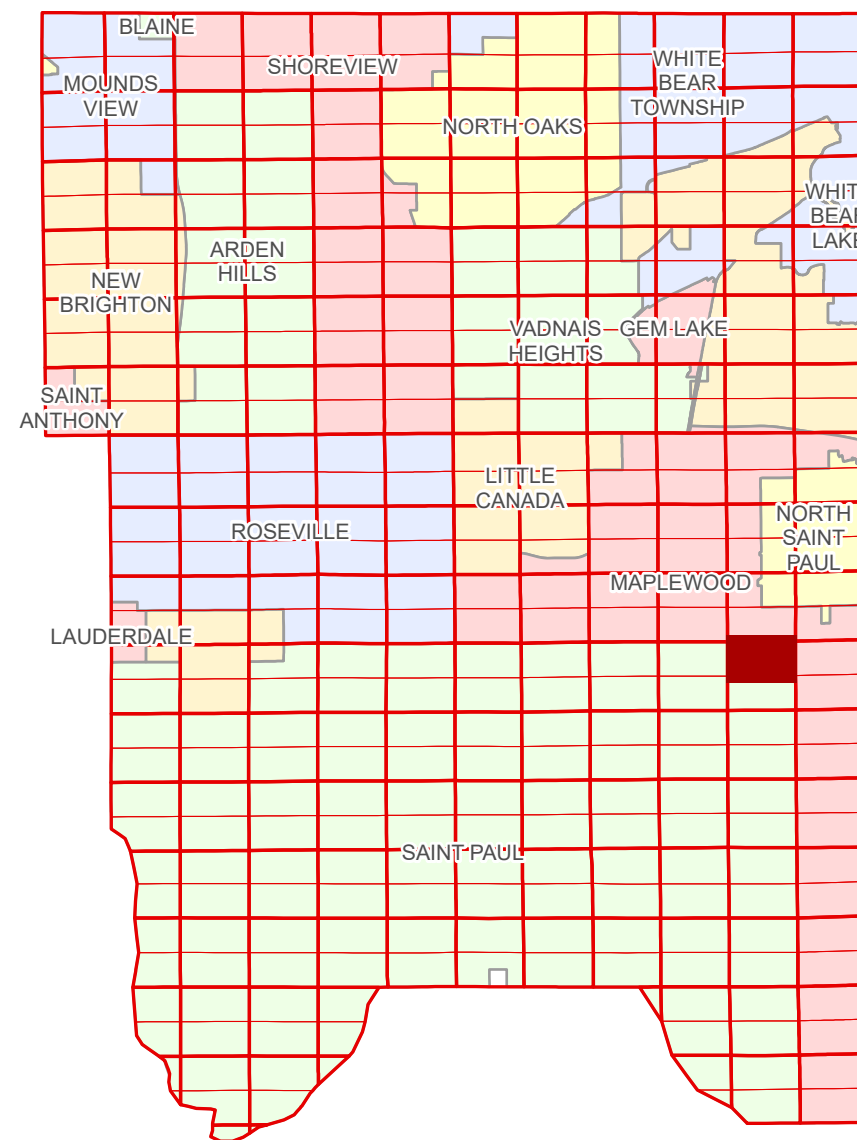


N Half
Section 23
T 29 N
R 22 W

Ramsey County Minnesota Parcel Map

Ramsey County
Section 14



Ramsey County
Section 22

Section 24
Ramsey County

Legend

- Section
- Quarter
- Quarter Quarter
- County Right of Way
- Municipal Right of Way
- Subdivision Type
- Registered Land Survey
- Highway RoW Plat
- Division Type
- Lot
- Outlot
- Park
- Tract
- Metes & Bounds
- Tax Parcel Type
- Real Property
- Easement Type
- Private Driveway
- Utility, Water
- Drainage & Utility

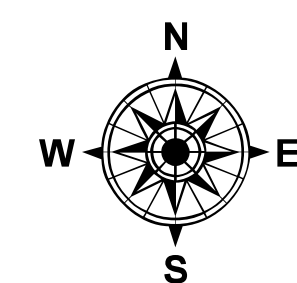
The information on this map is a compilation of Ramsey County Records. THE COUNTY DOES NOT WARRANT OR GUARANTEE THE ACCURACY OF THIS DATA. The County disclaims any liability for any injuries, time delays, or expenses you may suffer if you rely in any manner on the accuracy of this data.

NOTE: This is not an official Ramsey County tax lot map. This is based on the data available in the Geographic Information System, which may vary from tax data officially recorded in the Tax System. For an official tax map, please contact the Office of Property Records and Revenue.

Produced by Information Services Enterprise GIS Division
RCGSMetaData@Co.Ramsey.MN.US

651-266-2000
AskPropertyTaxandRecords@co.ramsey.mn.us

Section 23
Ramsey County



0 450 900 1800 2700 3600 Feet
1" = 200'
1:2,400

N232922

1/3/2025