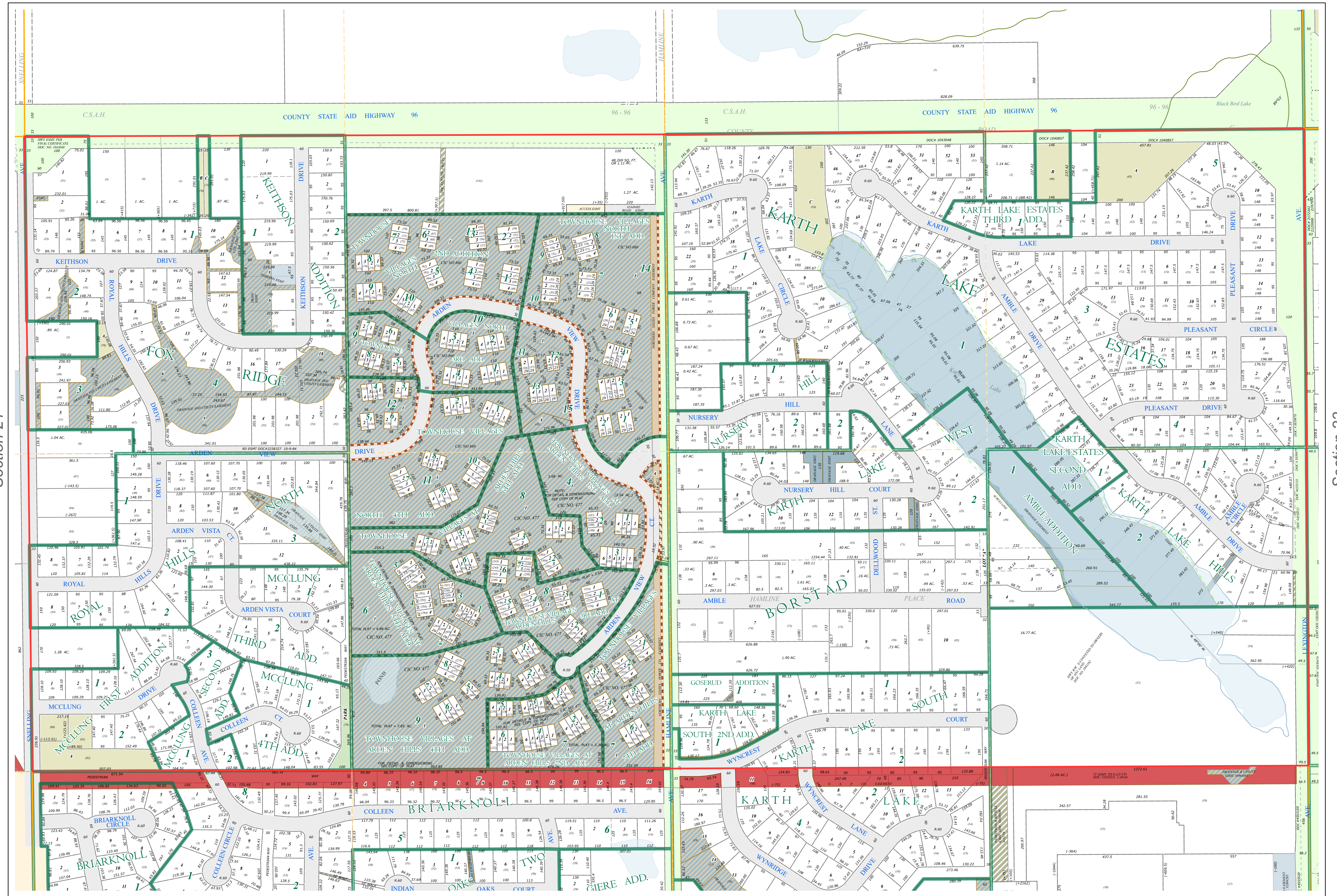
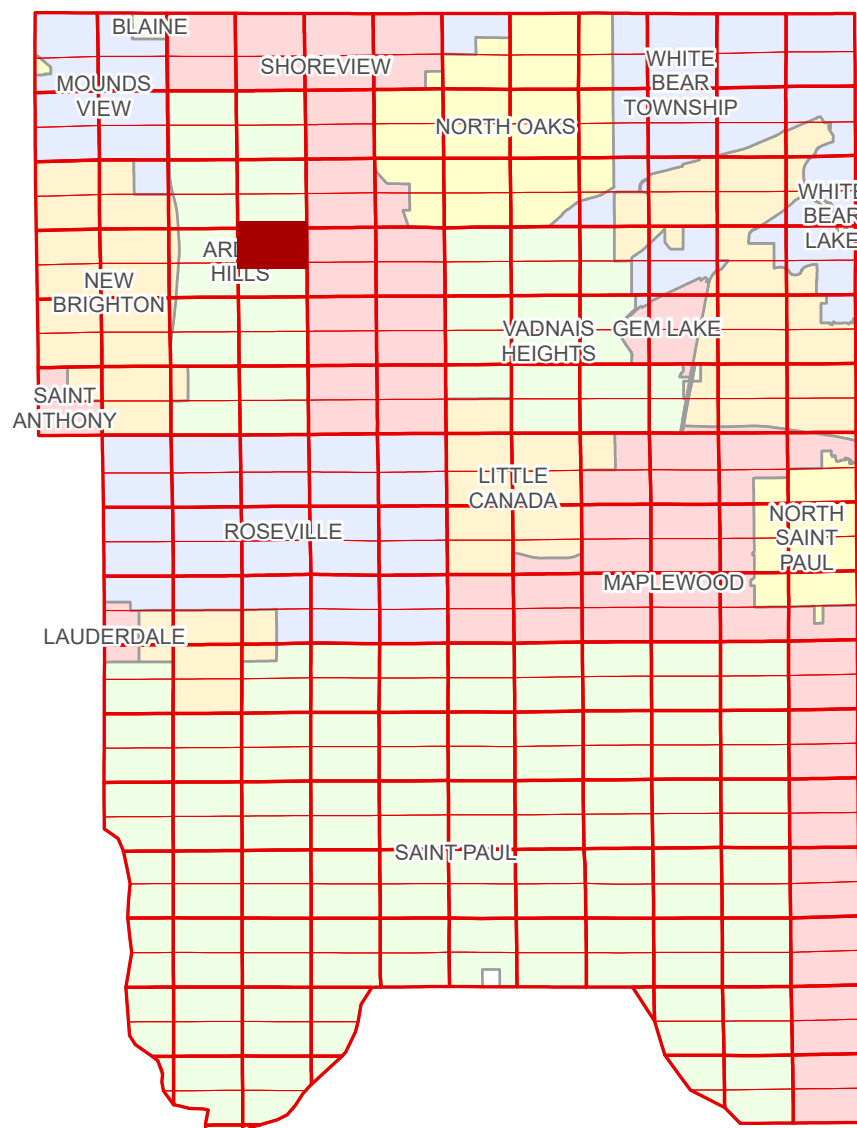


# Ramsey County Minnesota Parcel Map

Ramsey County  
Section 15

N Half  
Section 22  
T 30 N  
R 23 W



Ramsey County  
Section 21

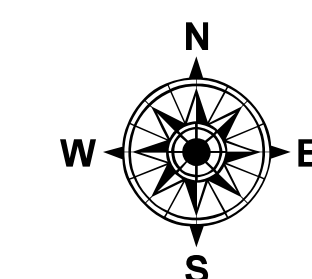
Section 23  
Ramsey County

Legend	
	Section
	Quarter
	Quarter Quarter
	County Right of Way
	Municipal Right of Way
	Subdivision Plat
	Planned Community
	Division Type
	Lot
	Outlot
	Park
	Metes & Bounds
	Tax Parcel Type
	Real Property
	Easement Type
	Ponding
	Pedestrian
	Private Access
	Utility, Electric
	Utility, Unidentified
	Drainage & Utility
	Drainage

The information on this map is a compilation of Ramsey County Records. THE COUNTY DOES NOT WARRANT OR GUARANTEE THE ACCURACY OF THIS DATA. The County disclaims any liability for any injuries, time delays, or expenses you may suffer if you rely in any manner on the accuracy of this data.  
Produced by Information Services Enterprise GIS Division  
RCGSMetaData@Co.Ramsey.MN.US

NOTE: This is not an official Ramsey County tax lot map. This is based on the data available in the Geographic Information System, which may vary from tax data officially recorded in the Tax System. For an official tax map, please contact the Office of Property Records and Revenue.  
651-266-2000  
AskPropertyTaxandRecords@co.ramsey.mn.us

Section 22  
Ramsey County



0 450 180 270 360 Feet  
1" = 200'  
1:2,400

N223023

1/3/2025