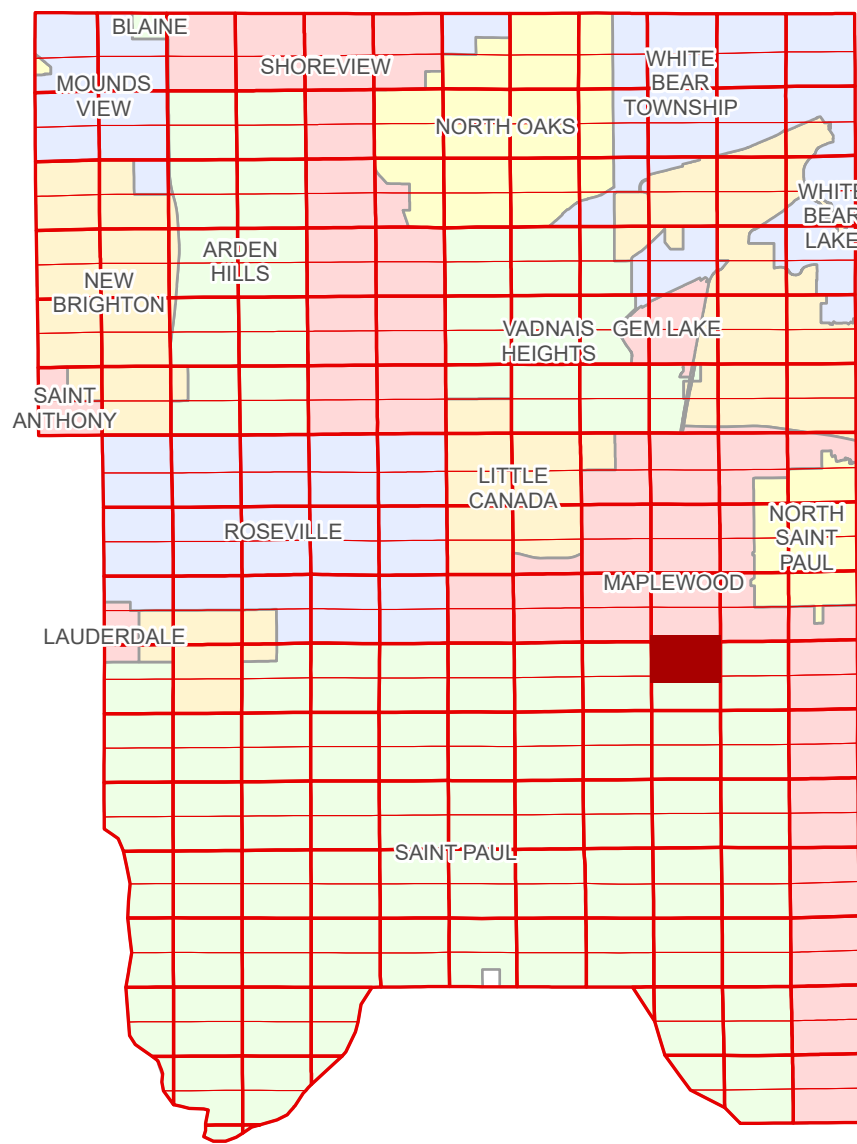


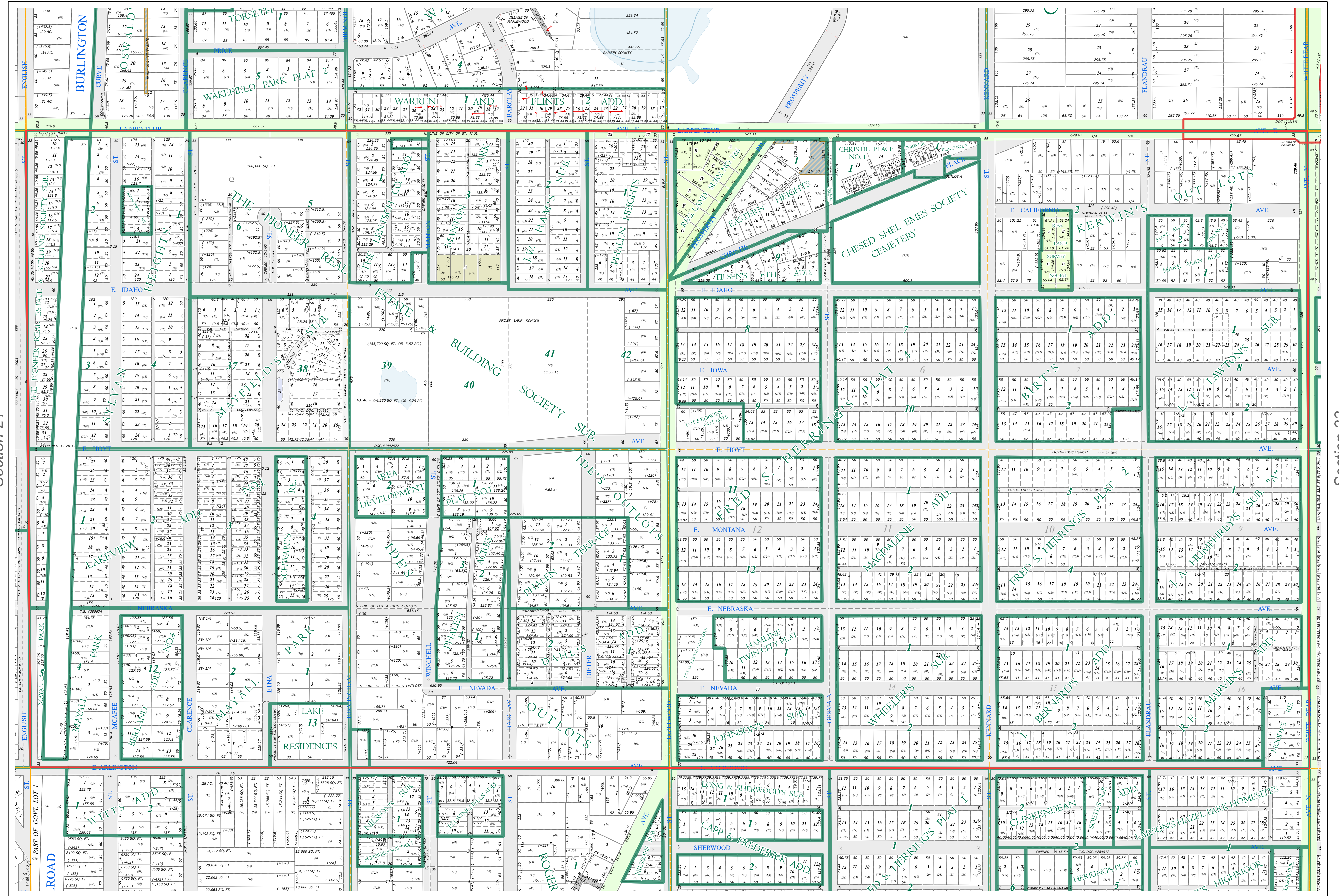
N Half  
Section 22  
T 29 N  
R 22 W

# Ramsey County Minnesota Parcel Map

Ramsey County  
Section 15



Ramsey County  
Section 21



Ramsey County  
Section 23

**Legend**

	Section		Division Type
	Quarter		Lot
	Quarter Quarter		Other
	County Right of Way		Outlot
	Municipal Right of Way		Tract
	Subdivision Type		Metes & Bounds
	Registered Land Survey		Tax Parcel Type
	Highway RoW Plat		Personal Property
			Real Property
			Easement Type
			Drainage & Utility

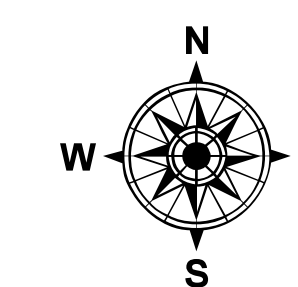
The information on this map is a compilation of Ramsey County Records. THE COUNTY DOES NOT WARRANT OR GUARANTEE THE ACCURACY OF THIS DATA. The County disclaims any liability for any injuries, time delays, or expenses you may suffer if you rely in any manner on the accuracy of this data.

NOTE: This is not an official Ramsey County tax lot map. This is based on the data available in the Geographic Information System, which may vary from tax data officially recorded in the Tax System. For an official tax map, please contact the Office of Property Records and Revenue.

Produced by Information Services Enterprise GIS Division  
RCGSMetaData@Co.Ramsey.MN.US

651-266-2000  
AskPropertyTaxandRecords@co.ramsey.mn.us

Section 22  
Ramsey County



0 4590 180 270 360 Feet

1" = 200'  
1:2,400

N222922

1/3/2025