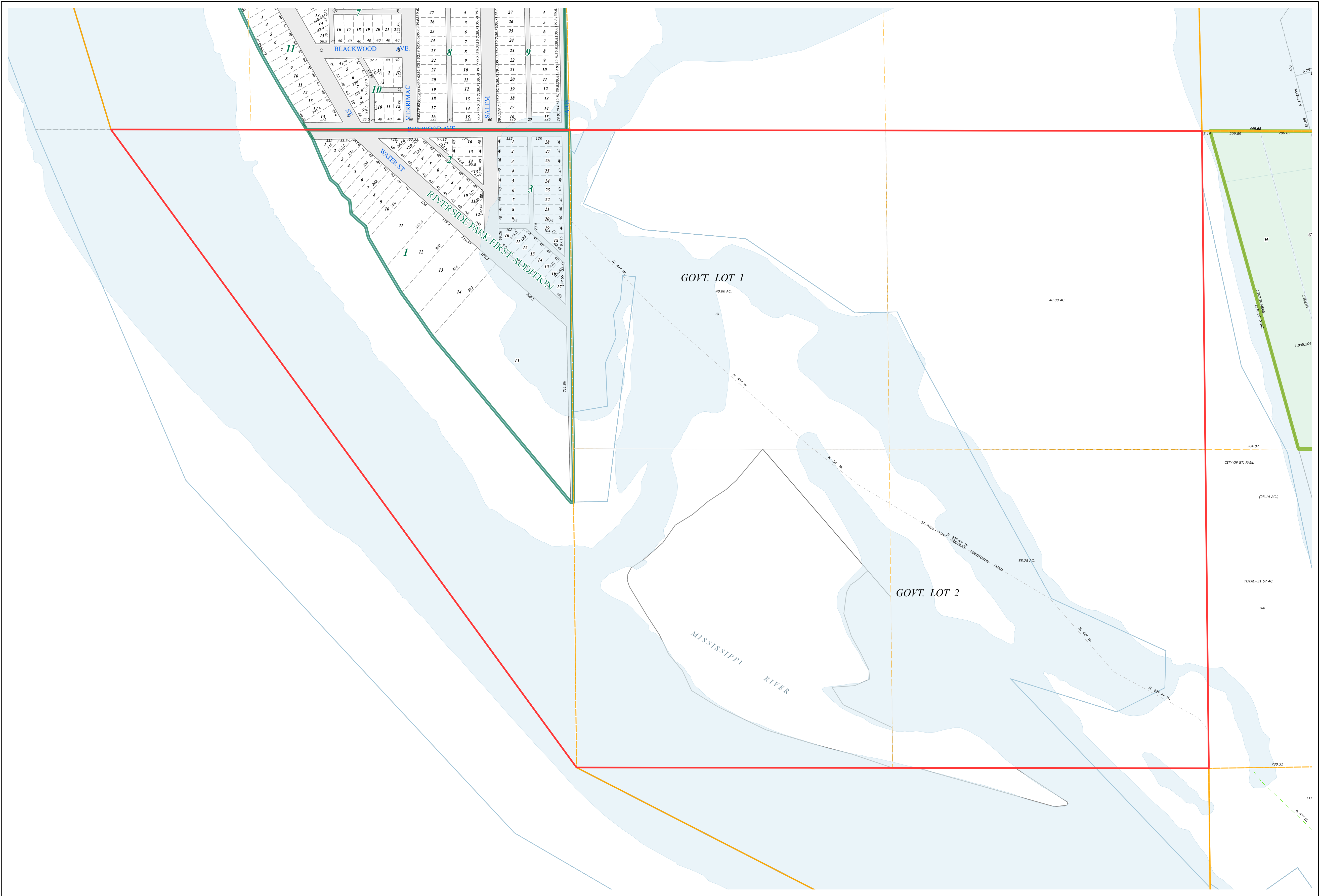
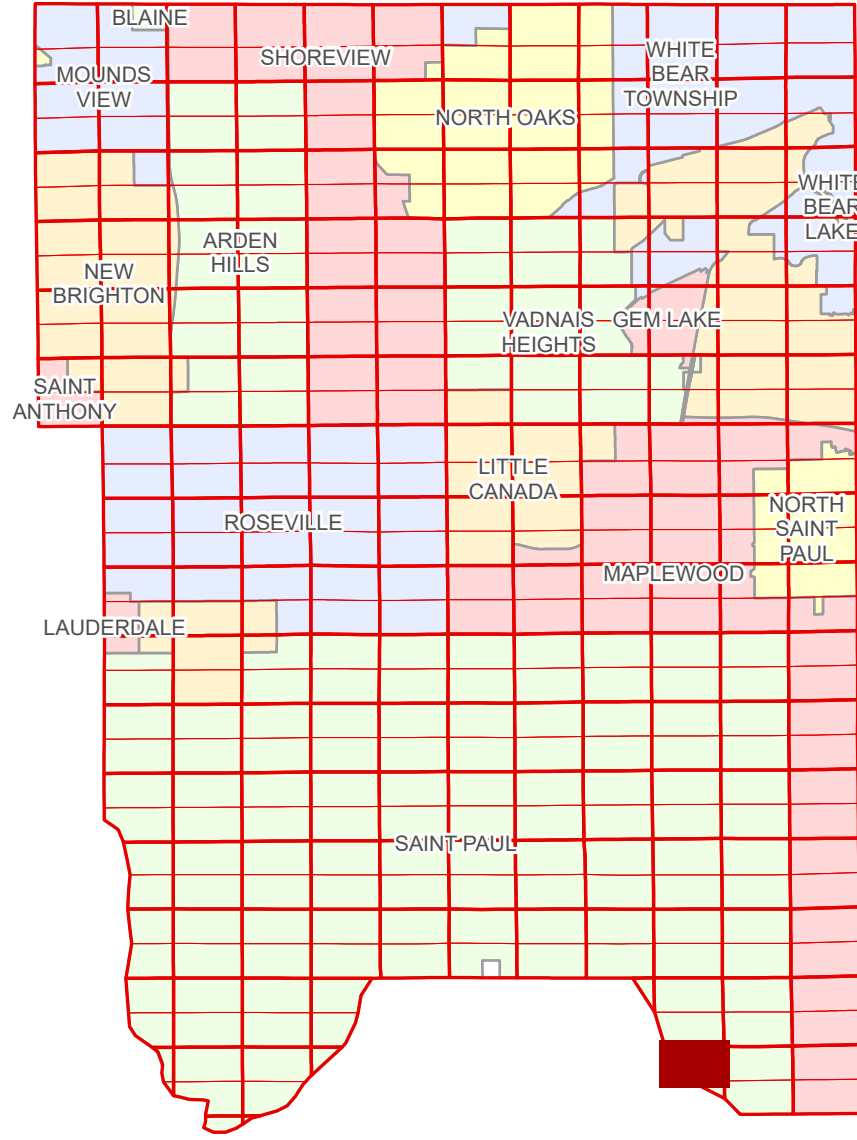


# Ramsey County Minnesota Parcel Map

Ramsey County  
Section 15

N Half  
Section 22  
T 28 N  
R 22 W



**Legend**

Section	<b>Division Type</b>
Quarter	Lot
Quarter Quarter	Metes & Bounds
Municipal Right of Way	<b>Tax Parcel Type</b>
<b>Subdivision Type</b>	Real Property
Subdivision Plat	

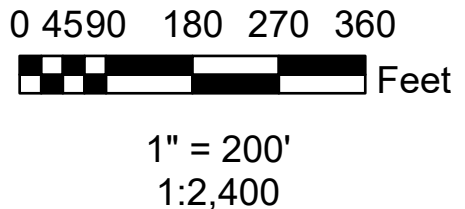
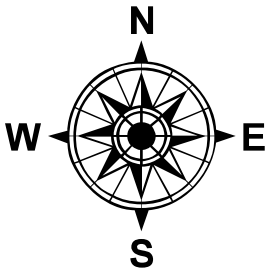
The information on this map is a compilation of Ramsey County Records. THE COUNTY DOES NOT WARRANT OR GUARANTEE THE ACCURACY OF THIS DATA. The County disclaims any liability for any injuries, time delays, or expenses you may suffer if you rely in any manner on the accuracy of this data.

Produced by Information Services Enterprise GIS Division  
RCGISMetaData@Co.Ramsey.MN.US

NOTE: This is not an official Ramsey County tax lot map. This is based on the data available in the Geographic Information System, which may vary from tax data officially recorded in the Tax System. For an official tax map, please contact the Office of Property Records and Revenue.

651-266-2000  
AskPropertyTaxandRecords@co.ramsey.mn.us

Section 22  
Dakota County



N222822

1/3/2025