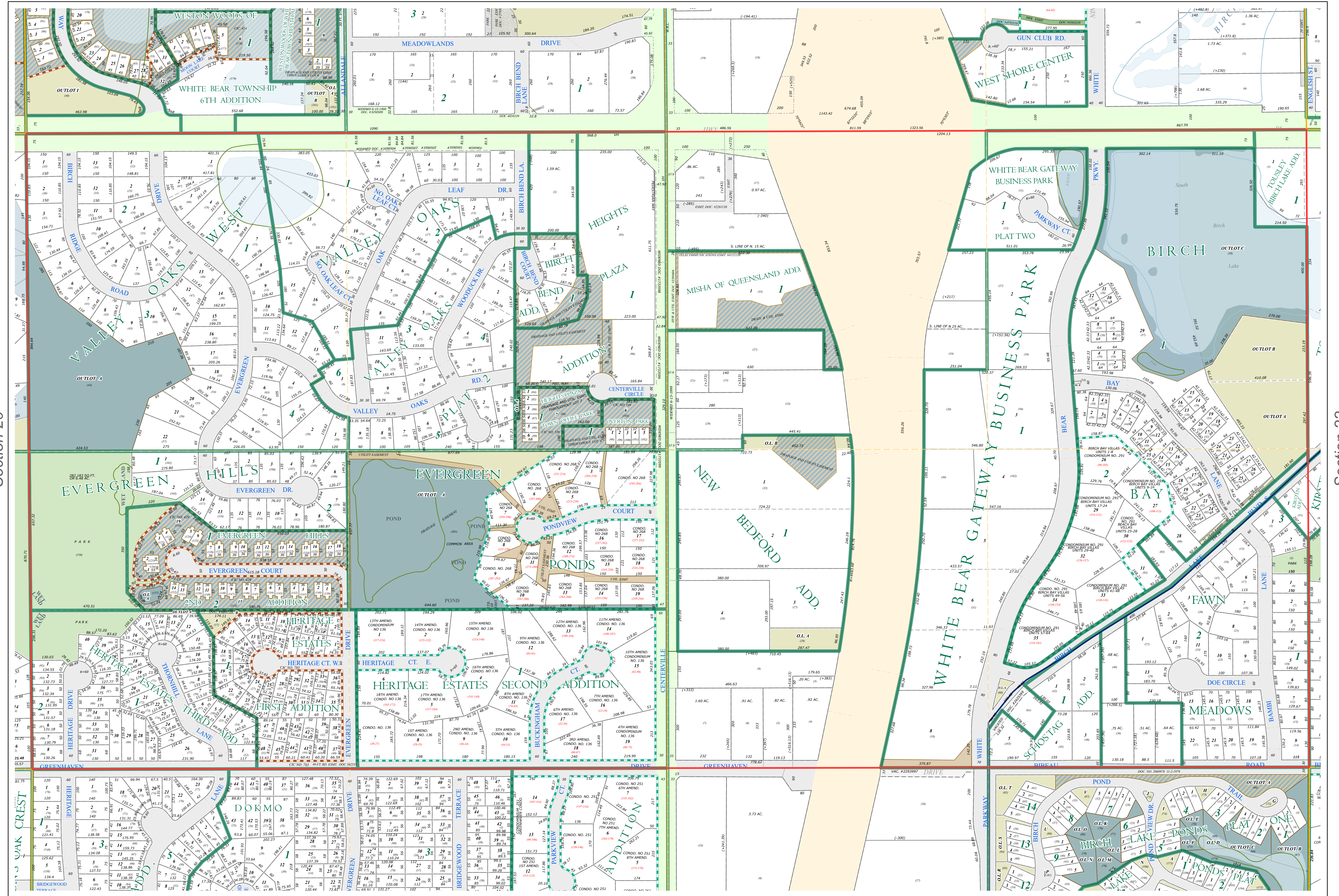
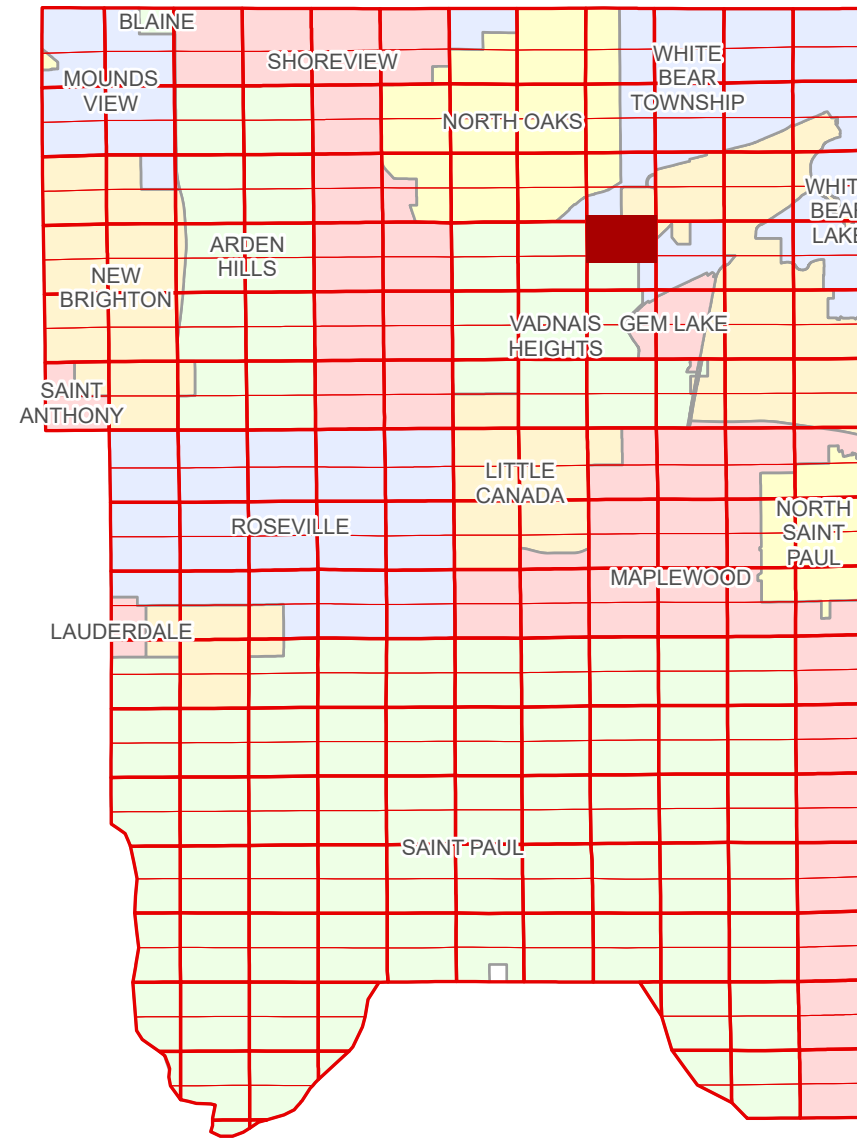


N Half
Section 21
T 30 N
R 22 W

Ramsey County Minnesota Parcel Map

Ramsey County
Section 16



Ramsey County
Section 20

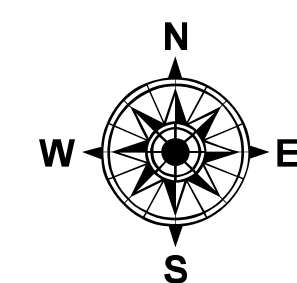
Section 22
Ramsey County

Legend			
	Section		Metes & Bounds
	Quarter		Tax Parcel Type
	Quarter Quarter		Real Property
	Federal Right of Way		Easement Type
	County Right of Way		Ponding
	Municipal Right of Way		Pedestrian
	Subdivision Type		Utility, Communication
	Subdivision Plat		Utility, Unidentified
	Planned Community		Drainage & Utility
	Condominium		Drainage
	Division Type		
	Lot		
	Outlot		
	Park		

The information on this map is a compilation of Ramsey County Records. THE COUNTY DOES NOT WARRANT OR GUARANTEE THE ACCURACY OF THIS DATA. The County disclaims any liability for any injuries, time delays, or expenses you may suffer if you rely in any manner on the accuracy of this data.
Produced by Information Services Enterprise GIS Division
RCGISMetaData@Co.Ramsey.MN.US

NOTE: This is not an official Ramsey County tax lot map. This is based on the data available in the Geographic Information System, which may vary from tax data officially recorded in the Tax System. For an official tax map, please contact the Office of Property Records and Revenue.
651-266-2000
AskPropertyTaxandRecords@co.ramsey.mn.us

Section 21
Ramsey County



0 4590 180 270 360
Feet

1" = 200'

1:2,400

N213022

1/3/2025