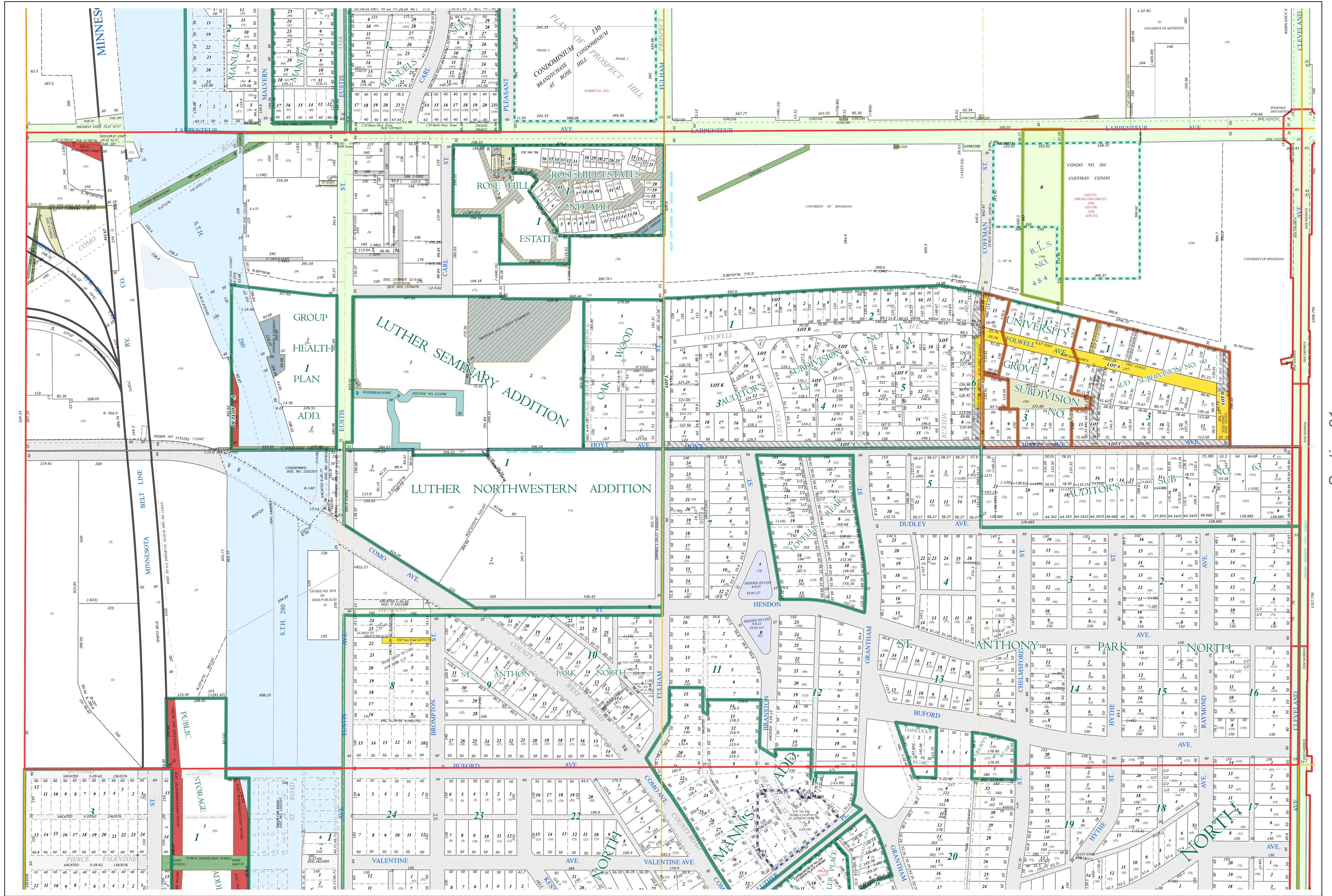
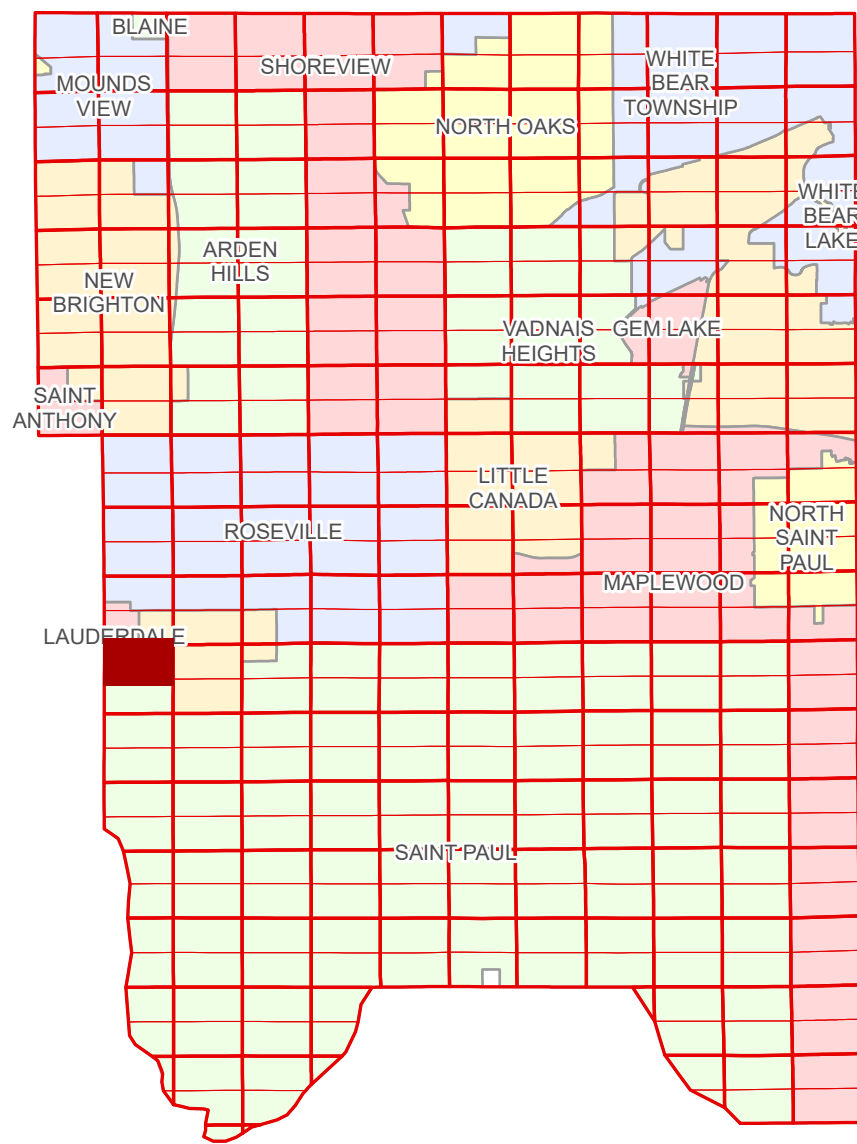


Ramsey County Minnesota Parcel Map

Ramsey County
Section 17

N Half
Section 20
T 29 N
R 23 W



Hennepin County
Section 19

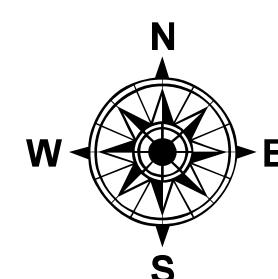
Section 21
Ramsey County

Legend			
	Section		Metes & Bounds
	Quarter		Tax Parcel Type
	Quarter Quarter		Personal Property
	State Right of Way		State Assessed Property
	County Right of Way		Real Property
	Municipal Right of Way		Easement Type
	Subdivision Type		Pedestrian
	Subdivision Plat		Private Access
	Registered Land Survey		Private Driveway
	Auditors' Subdivision		Public Right of Way
	Highway RoW Plat		Railroad
	Planned Community		Utility, Electric
	Condominium		Utility, Gas & Oil
	Division Type		Utility, Storm & Sanitary Sewer
	Lot		Utility, Water
	Other		Drainage & Utility
	Outlot		Drainage
	Tract		

The information on this map is a compilation of Ramsey County Records. THE COUNTY DOES NOT WARRANT OR GUARANTEE THE ACCURACY OF THIS DATA. The County disclaims any liability for any injuries, time delays, or expenses you may suffer if you rely in any manner on the accuracy of this data.
Produced by Information Services Enterprise GIS Division
RCGSMetaData@Co.Ramsey.MN.US

NOTE: This is not an official Ramsey County tax lot map. This is based on the data available in the Geographic Information System, which may vary from tax data officially recorded in the Tax System. For an official tax map, please contact the Office of Property Records and Revenue.
651-266-2000
AskPropertyTaxandRecords@co.ramsey.mn.us

Section 20
Ramsey County



0 4590 180 270 360 Feet

1" = 200'
1:2,400

N202923

1/3/2025