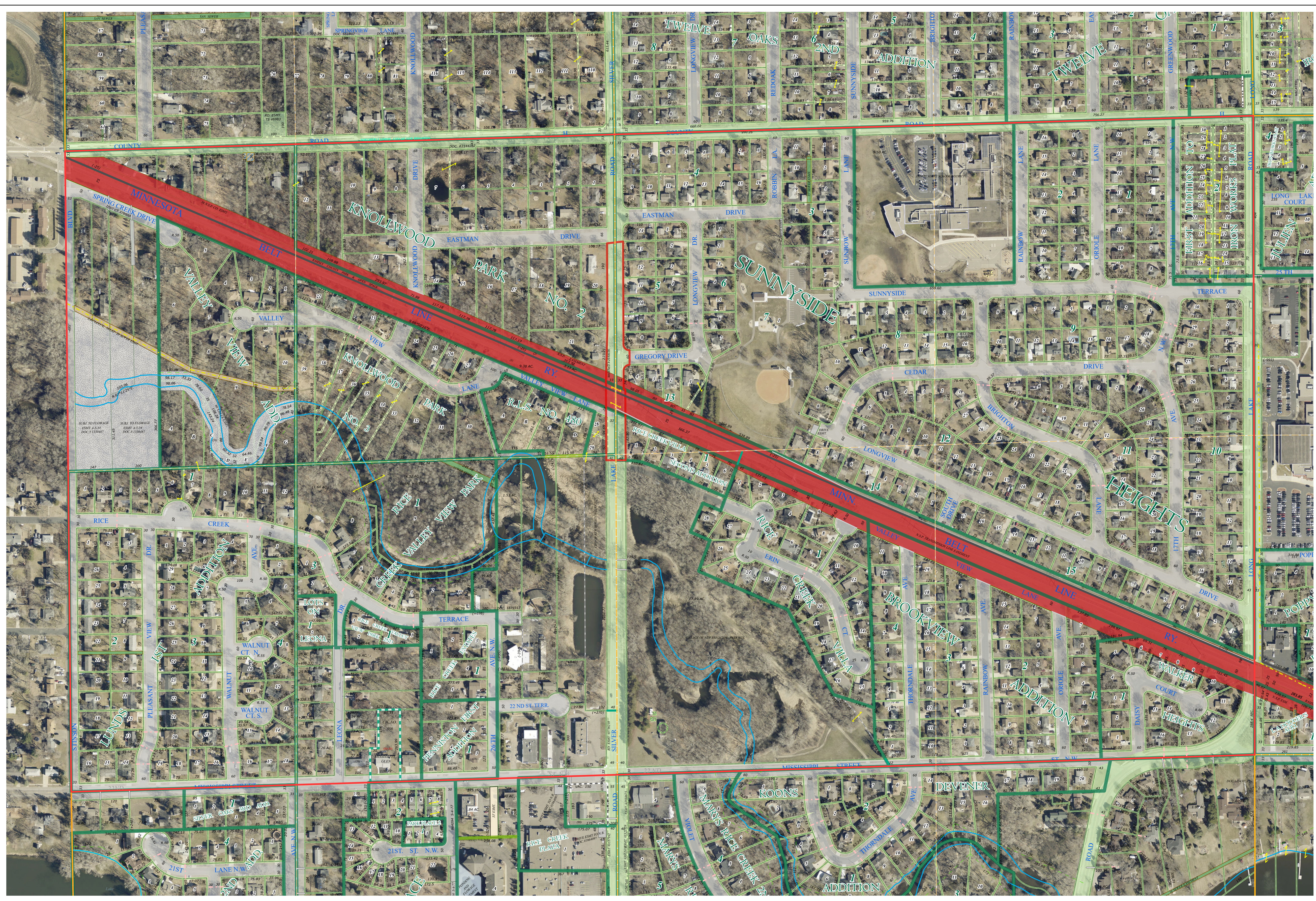
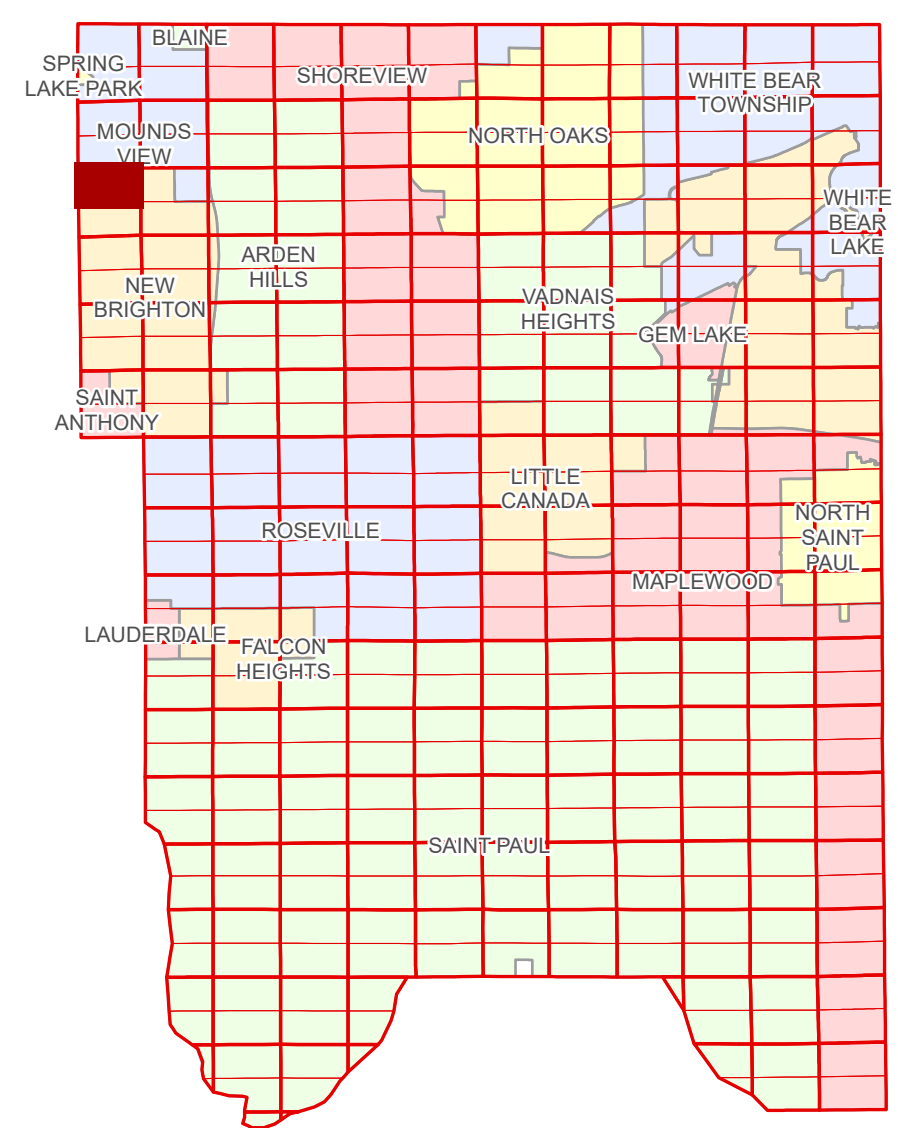


Ramsey County Minnesota Parcel Map

N Half
Section 18
T 30 N
R 23 W

Ramsey County
Section 7



Anoka County
Section 13

Section 17
Ramsey County

| Legend | | | |
|--------|------------------------|--|---------------------------------|
| | Section | | Metes & Bounds |
| | Quarter | | Tax Parcel Type |
| | Quarter Quarter | | Personal Property |
| | County Right of Way | | State Assessed Property |
| | Municipal Right of Way | | Real Property |
| | Subdivision Type | | Easement Type |
| | Subdivision Plat | | Private Driveway |
| | Registered Land Survey | | Utility, Electric |
| | Highway RoW Plat | | Utility, Storm & Sanitary Sewer |
| | Condominium | | Utility, Unidentified |
| | Division Type | | Drainage & Utility |
| | Lot | | Misc Easements |

The information on this map is a compilation of Ramsey County Records. THE COUNTY DOES NOT WARRANT OR GUARANTEE THE ACCURACY OF THIS DATA. The County disclaims any liability for any injuries, time delays, or expenses you may suffer if you rely in any manner on the accuracy of this data.

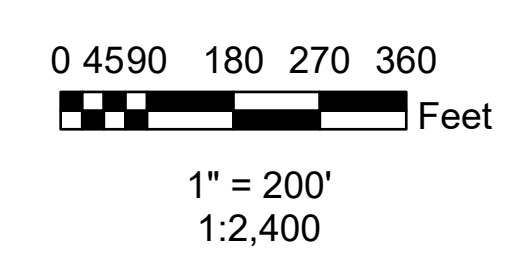
NOTE: This is not an official Ramsey County tax lot map. This is based on the data available in the Geographic Information System, which may vary from tax data officially recorded in the Tax System. For an official tax map, please contact the Office of Property Records and Revenue.

Produced by Information Services Enterprise GIS Division
RCGISMetaData@Co.Ramsey.MN.US

651-266-2000
AskPropertyTaxandRecords@co.ramsey.mn.us

Section 18
Ramsey County

Aerial Imagery Date: March 11 - April 4, 2024



N183023
1/3/2025