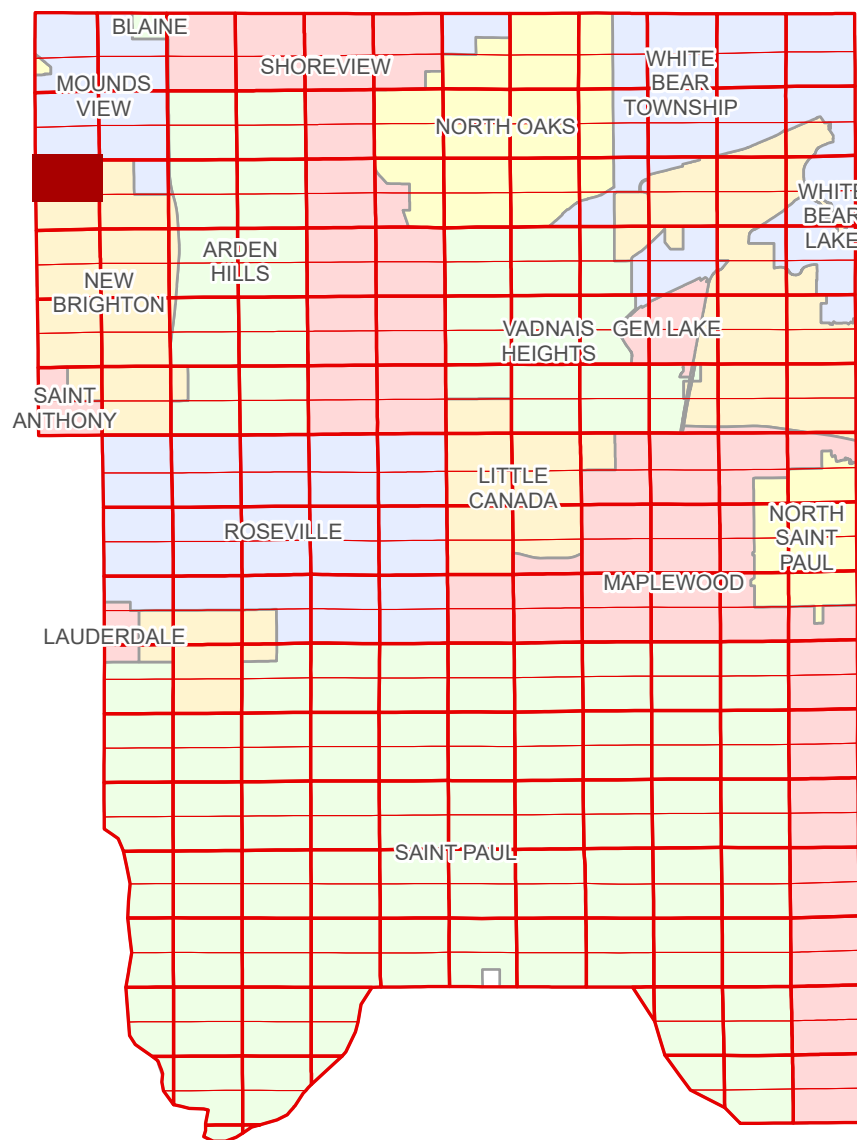


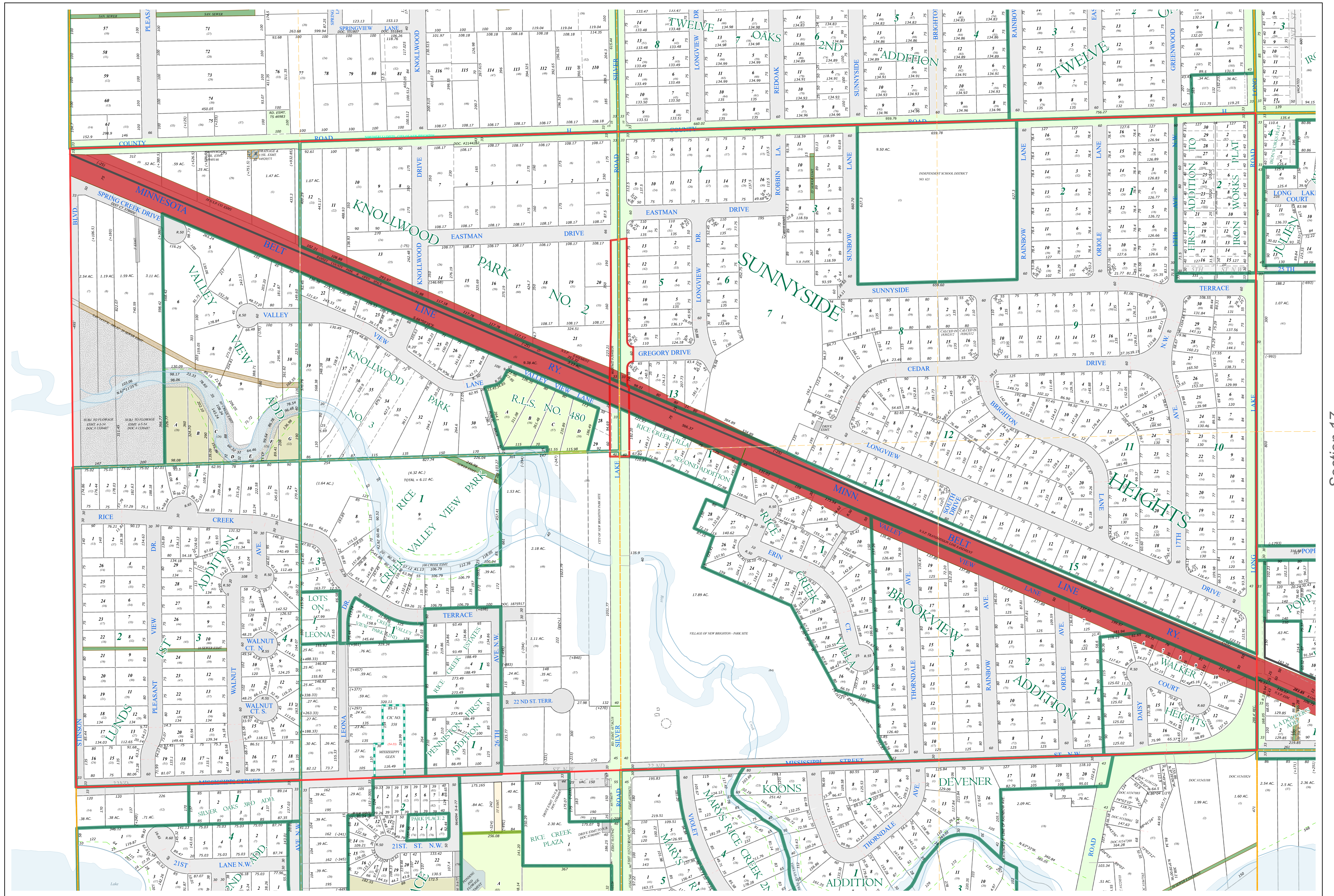
N Half
Section 18
T 30 N
R 23 W

Ramsey County Minnesota Parcel Map

Ramsey County
Section 7



Anoka County
Section 13



Section 17
Ramsey County

Legend			
	Section		Metes & Bounds
	Quarter		Tax Parcel Type
	Quarter Quarter		Personal Property
	County Right of Way		State Assessed Property
	Municipal Right of Way		Real Property
	Subdivision Type		Private Driveway
	Subdivision Plat		Utility, Electric
	Registered Land Survey		Utility, Storm & Sanitary Sewer
	Highway RoW Plat		Utility, Unidentified
	Condominium		Drainage & Utility
	Division Type		Misc Easements
	Lot		
	Outlot		
	Tract		

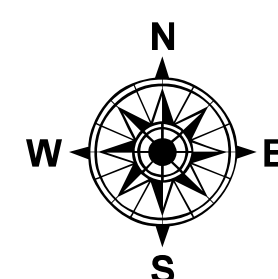
The information on this map is a compilation of Ramsey County Records. THE COUNTY DOES NOT WARRANT OR GUARANTEE THE ACCURACY OF THIS DATA. The County disclaims any liability for any injuries, time delays, or expenses you may suffer if you rely in any manner on the accuracy of this data.

NOTE: This is not an official Ramsey County tax lot map. This is based on the data available in the Geographic Information System, which may vary from tax data officially recorded in the Tax System. For an official tax map, please contact the Office of Property Records and Revenue.

Produced by Information Services Enterprise GIS Division
RCGISMetaData@Co.Ramsey.MN.US

651-266-2000
AskPropertyTaxandRecords@co.ramsey.mn.us

Section 18
Ramsey County



0 4590 180 270 360 Feet
1" = 200'
1:2,400

N183023

1/3/2025