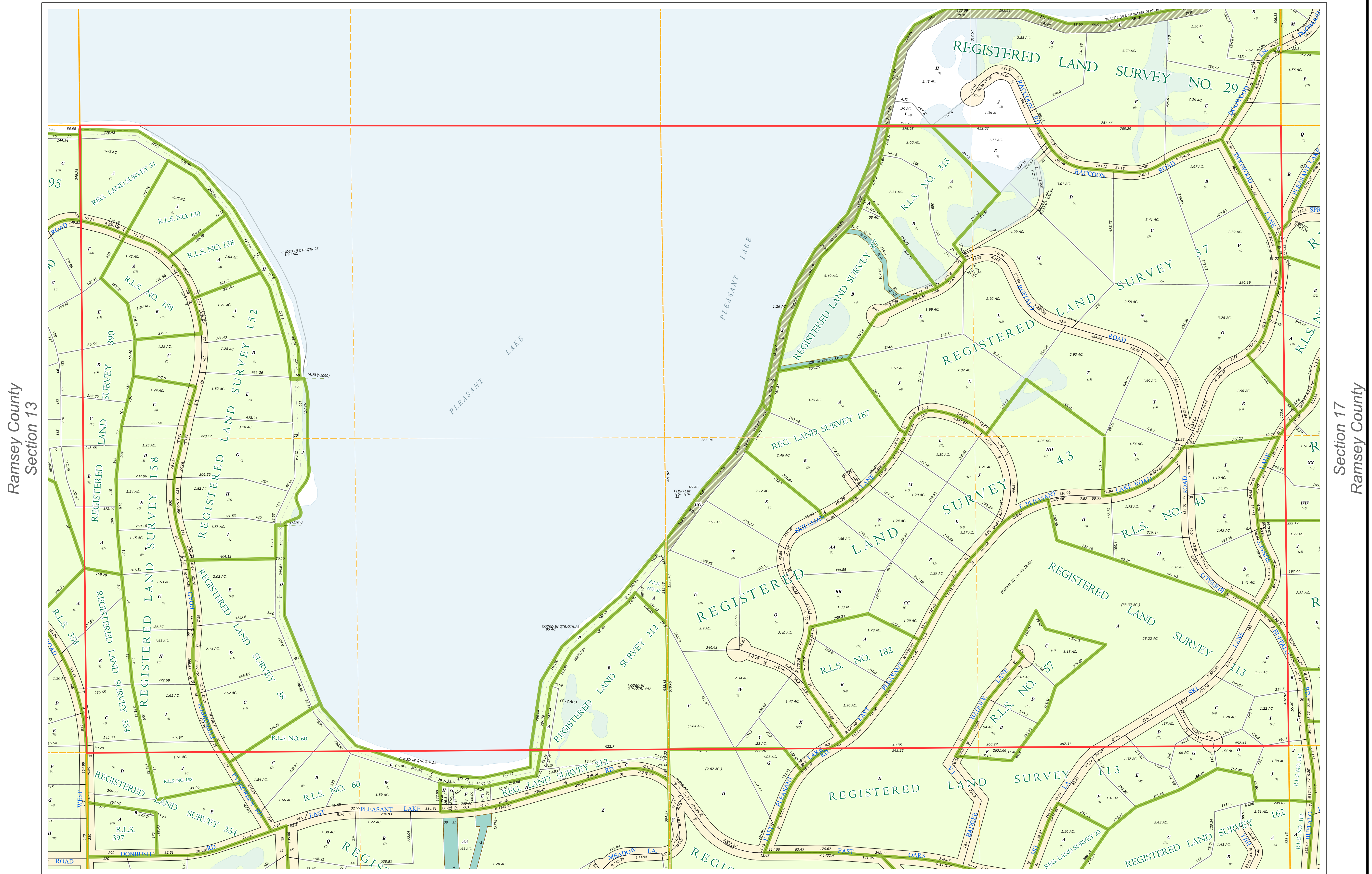
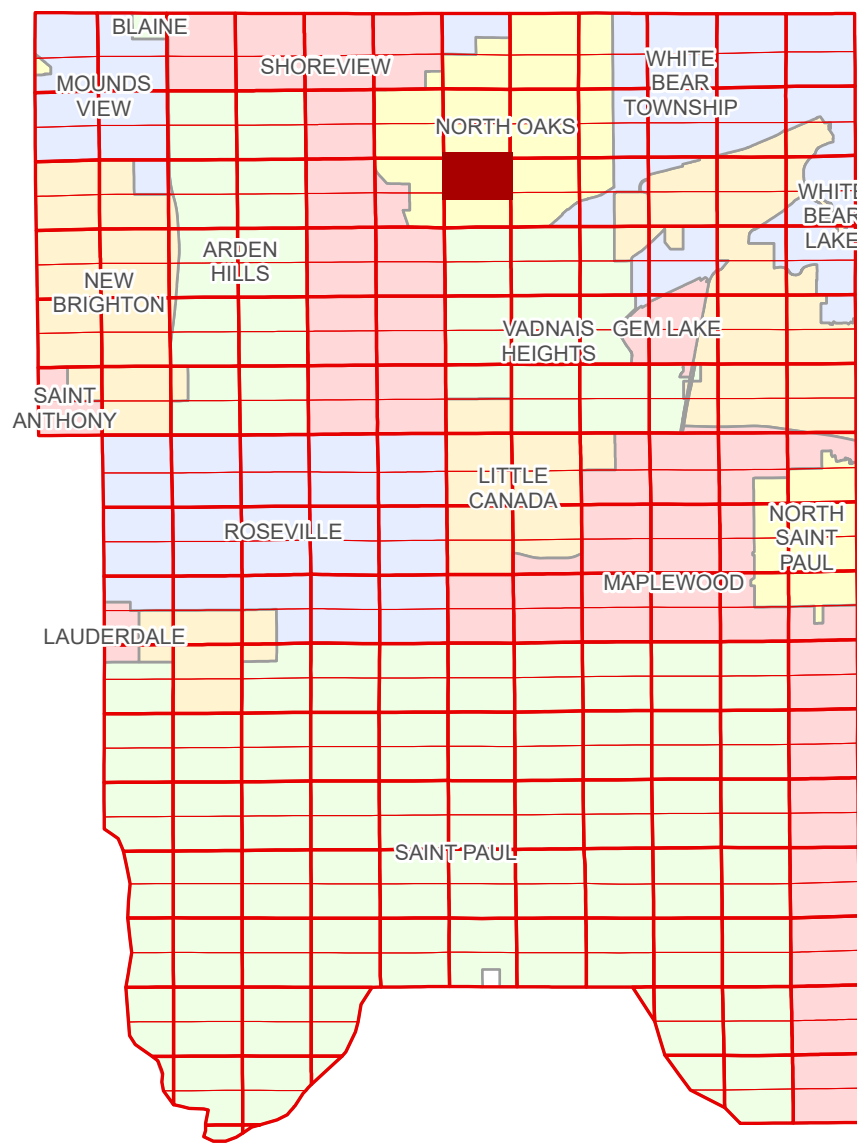


Ramsey County Minnesota Parcel Map

Ramsey County
Section 7

N Half
Section 18
T 30 N
R 22 W



Ramsey County
Section 13

Ramsey County
Section 17

Section 18
Ramsey County

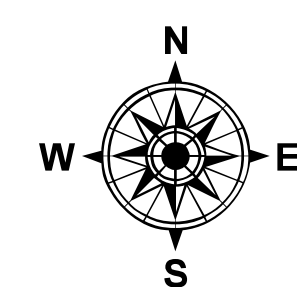
Legend			
	Section		Metes & Bounds
	Quarter		Tax Parcel Type
	Quarter Quarter		Real Property
	Subdivision Type		Easement Type
	Registered Land Survey		Pedestrian
	Division Type		Private Access
	Lot		Utility, Water
	Tract		

The information on this map is a compilation of Ramsey County Records. THE COUNTY DOES NOT WARRANT OR GUARANTEE THE ACCURACY OF THIS DATA. The County disclaims any liability for any injuries, time delays, or expenses you may suffer if you rely in any manner on the accuracy of this data.

Produced by Information Services Enterprise GIS Division
RCGISMetaData@Co.Ramsey.MN.US

NOTE: This is not an official Ramsey County tax lot map. This is based on the data available in the Geographic Information System, which may vary from tax data officially recorded in the Tax System. For an official tax map, please contact the Office of Property Records and Revenue.

651-266-2000
AskPropertyTaxandRecords@co.ramsey.mn.us



0 4590 180 270 360
Feet

1" = 200'
1:2,400

N183022

1/3/2025