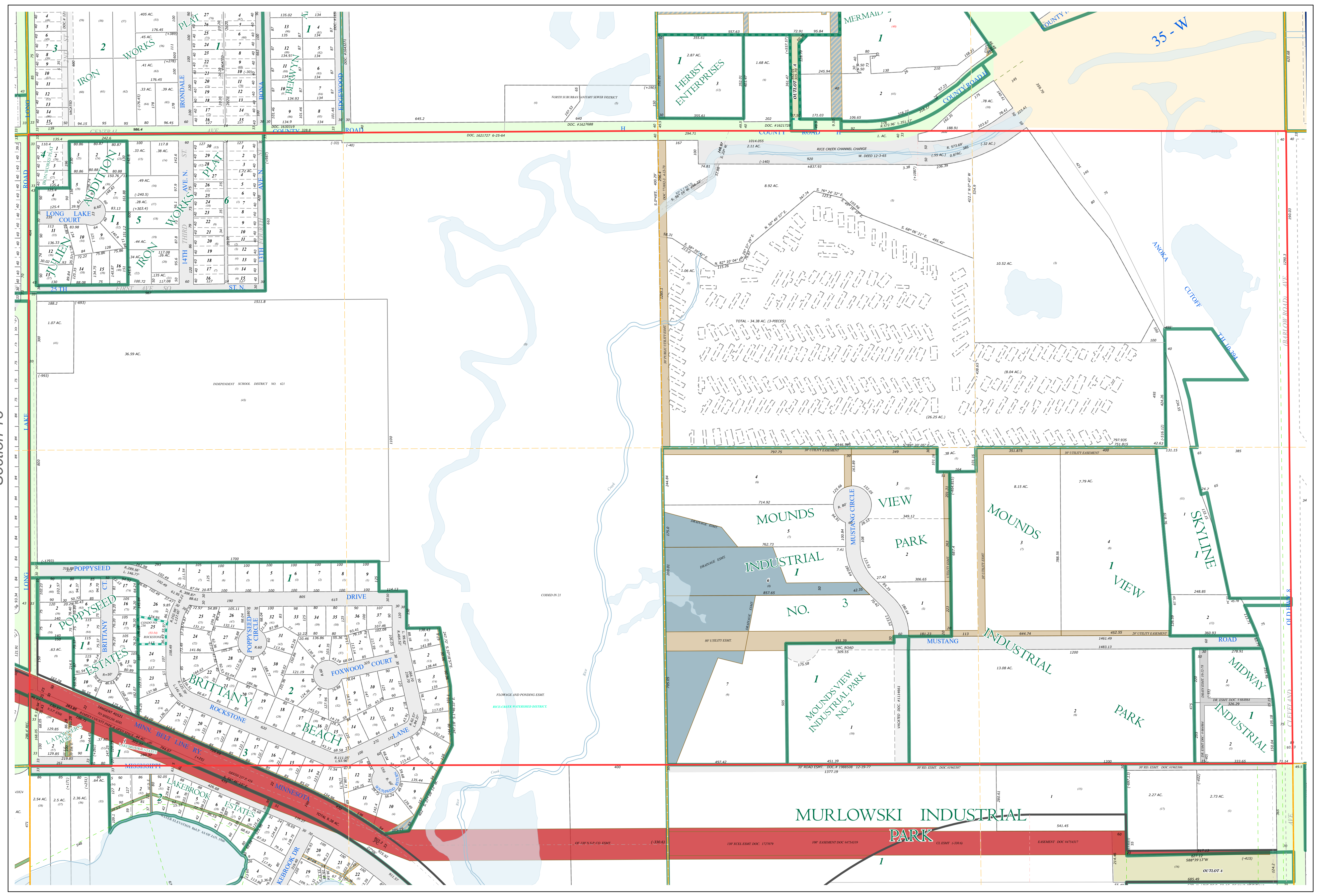
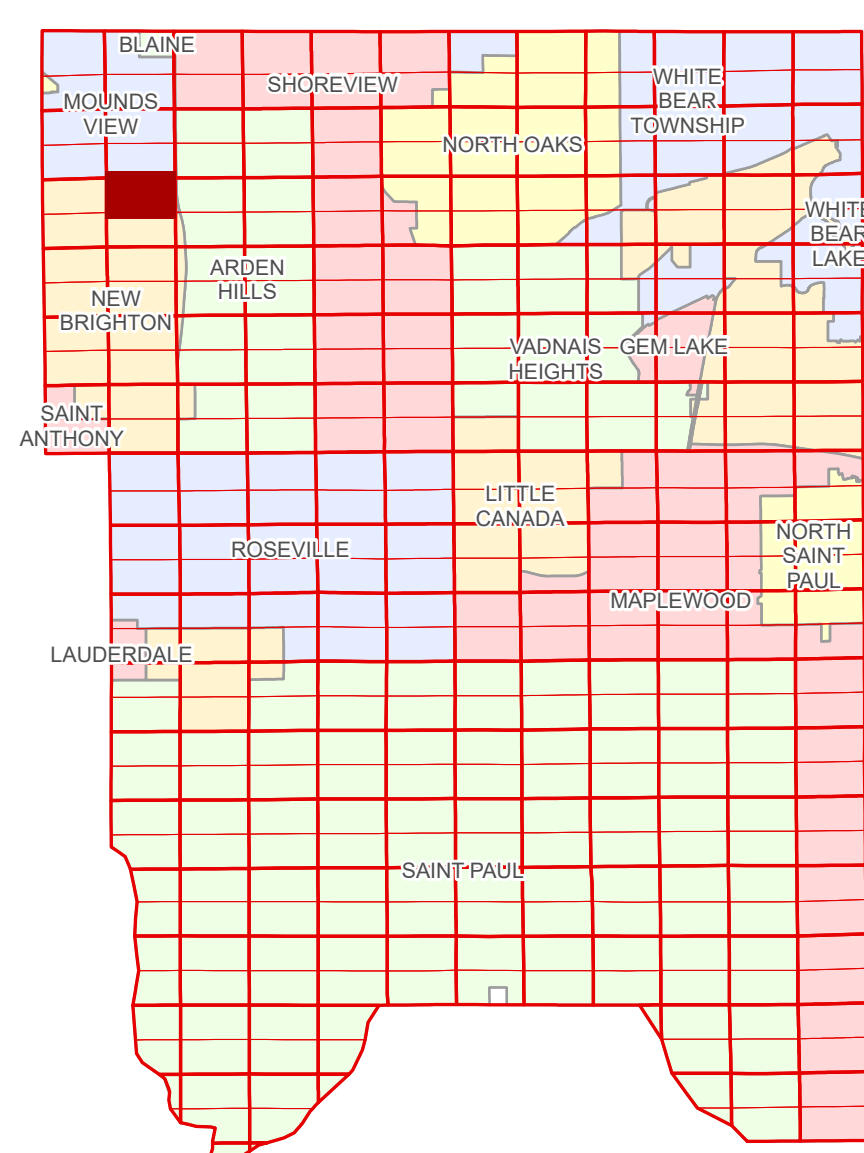


# Ramsey County Minnesota Parcel Map

N Half  
Section 17  
T 30 N  
R 23 W

Ramsey County  
Section 8



Ramsey County  
Section 18

Section 16  
Ramsey County

**Legend**

Section	Tax Parcel Type
Quarter	State Assessed Property
Quarter Quarter	Manufactured Home
County Right of Way	Real Property
Municipal Right of Way	Private Driveway
<b>Subdivision Type</b>	<b>Easement Type</b>
Subdivision Plat	Utility, Electric
Condominium	Utility, Storm & Sanitary Sewer
<b>Division Type</b>	Utility, Unidentified
Lot	Drainage & Utility
Metes & Bounds	Drainage
	Misc Easements

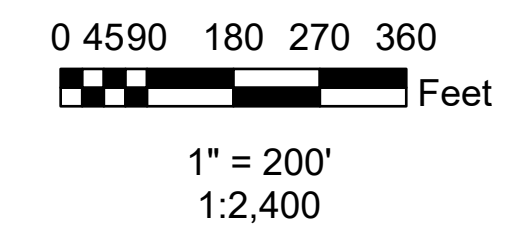
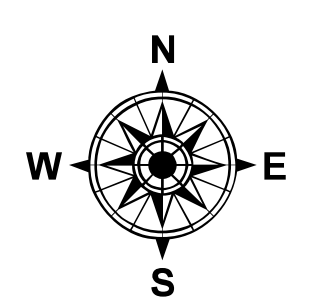
The information on this map is a compilation of Ramsey County Records. THE COUNTY DOES NOT WARRANT OR GUARANTEE THE ACCURACY OF THIS DATA. The County disclaims any liability for any injuries, time delays, or expenses you may suffer if you rely in any manner on the accuracy of this data.

Produced by Information Services Enterprise GIS Division  
RCGISMetaData@Co.Ramsey.MN.US

NOTE: This is not an official Ramsey County tax lot map. This is based on the data available in the Geographic Information System, which may vary from tax data officially recorded in the Tax System. For an official tax map, please contact the Office of Property Records and Revenue.

651-266-2000  
AskPropertyTaxandRecords@co.ramsey.mn.us

Section 17  
Ramsey County



N173023  
1/3/2025