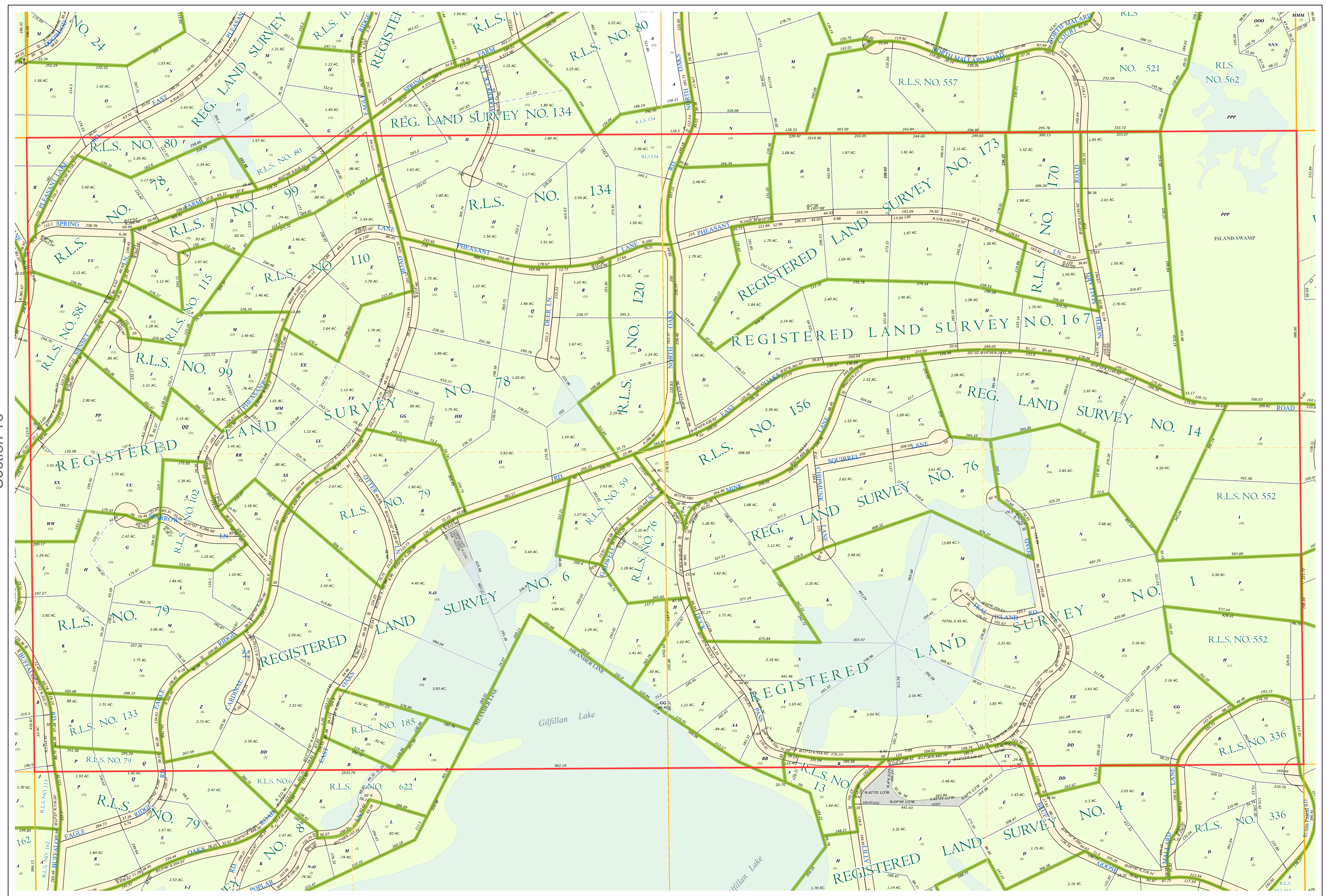
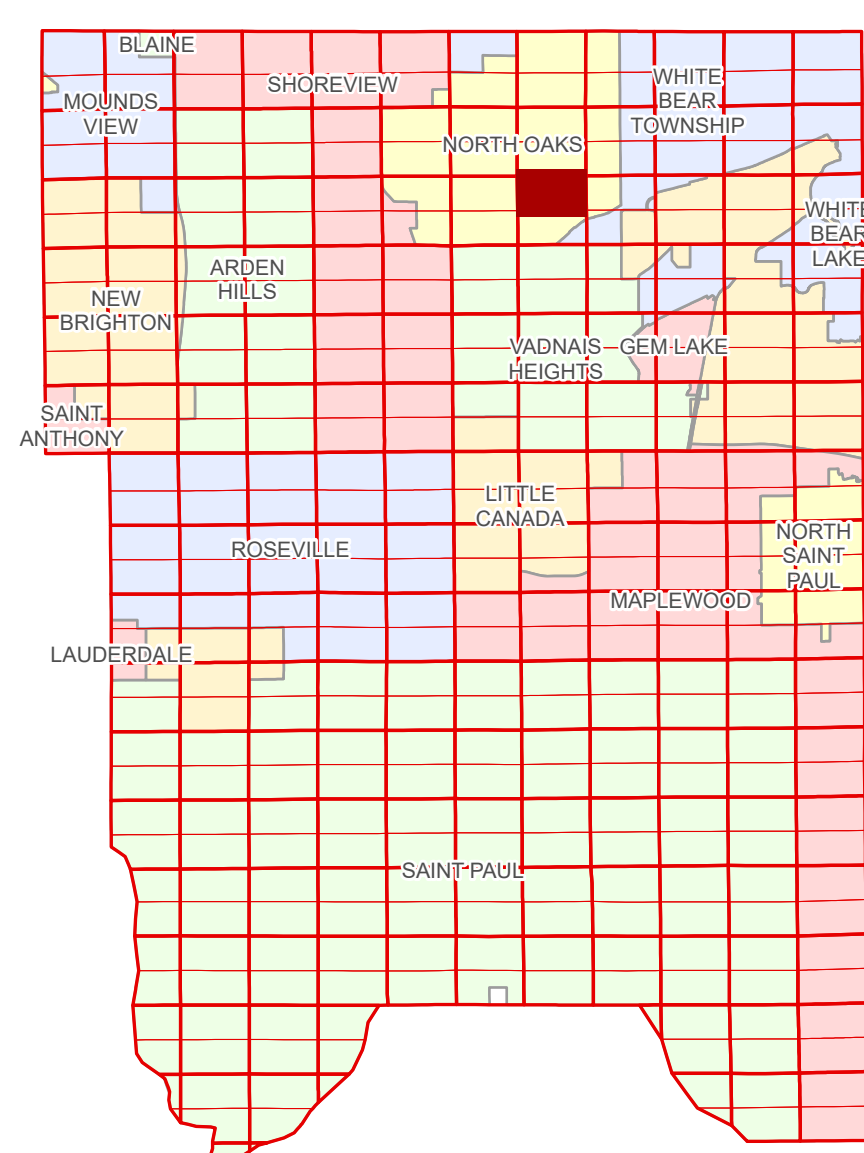


Ramsey County Minnesota Parcel Map

Ramsey County
Section 8

N Half
Section 17
T 30 N
R 22 W



Ramsey County
Section 18

Section 16
Ramsey County

Legend

| | |
|------------------------|-----------------|
| Section | Metes & Bounds |
| Quarter | Tax Parcel Type |
| Quarter Quarter | Real Property |
| Subdivision Type | Easement Type |
| Registered Land Survey | Private Access |
| Division Type | Misc Easements |
| Tract | |

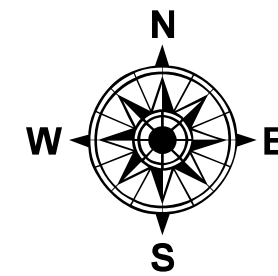
The information on this map is a compilation of Ramsey County Records. THE COUNTY DOES NOT WARRANT OR GUARANTEE THE ACCURACY OF THIS DATA. The County disclaims any liability for any injuries, time delays, or expenses you may suffer if you rely in any manner on the accuracy of this data.

Produced by Information Services Enterprise GIS Division
RCGSMetaData@Co.Ramsey.MN.US

NOTE: This is not an official Ramsey County tax lot map. This is based on the data available in the Geographic Information System, which may vary from tax data officially recorded in the Tax System. For an official tax map, please contact the Office of Property Records and Revenue.

651-266-2000
AskPropertyTaxandRecords@co.ramsey.mn.us

Section 17
Ramsey County



0 450 900 1800 2700 3600 Feet
1" = 200'
1:2,400

N173022
1/3/2025

