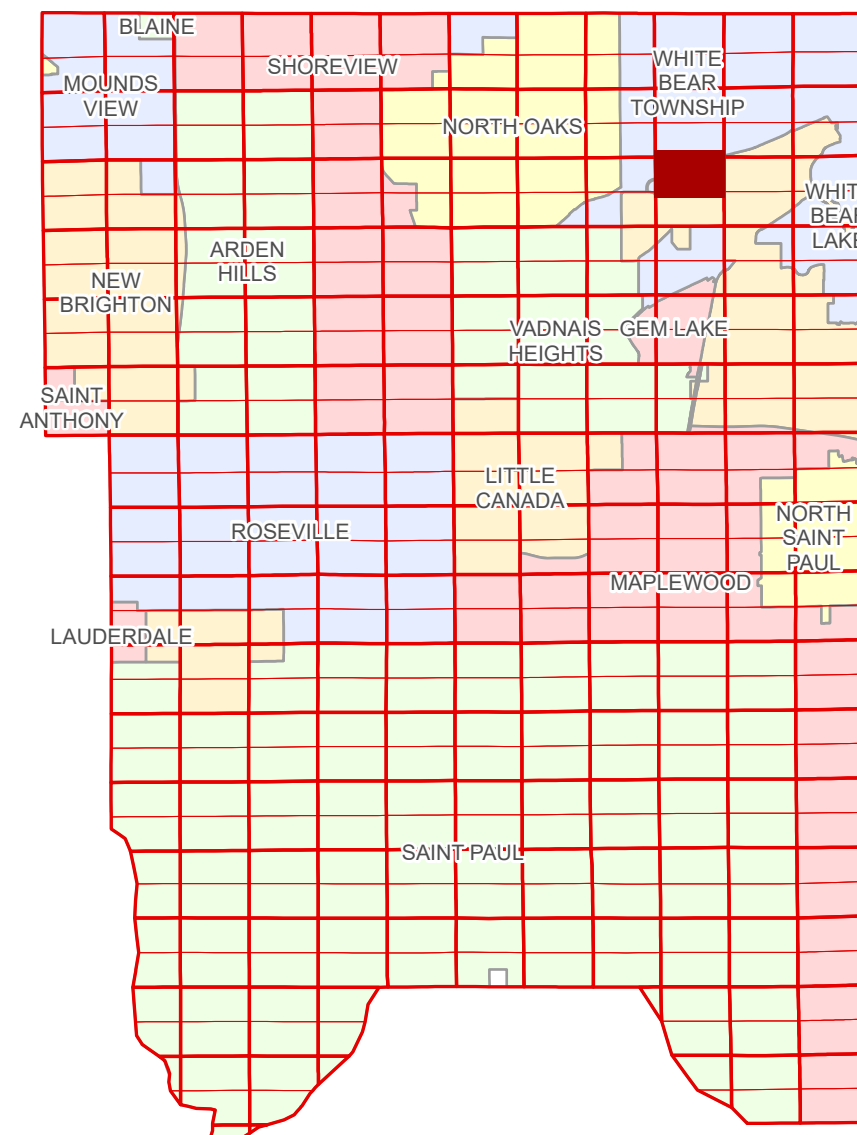


N Half  
Section 15  
T 30 N  
R 22 W

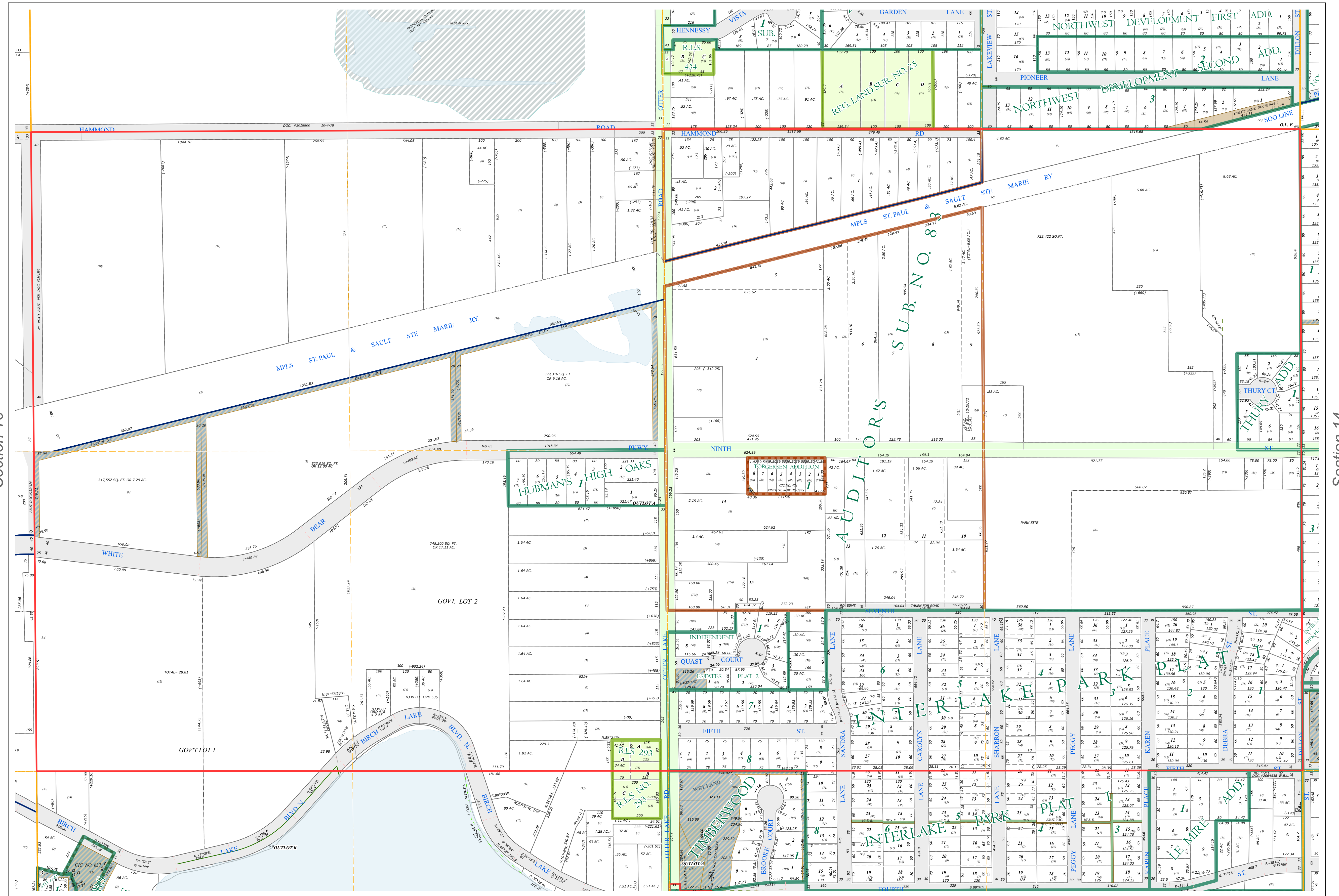
# Ramsey County Minnesota Parcel Map

Ramsey County  
Section 10



Ramsey County  
Section 16

Section 14  
Ramsey County



**Legend**

	Section		Division Type
	Quarter		Lot
	Quarter Quarter		Outlot
	County Right of Way		Tract
	Municipal Right of Way		Metes & Bounds
	Subdivision Type		Tax Parcel Type
	Registered Land Survey		State Assessed Property
	Auditors's Subdivision		Real Property
	Planned Community		Easement Type
			Utility, Unidentified
			Drainage & Utility

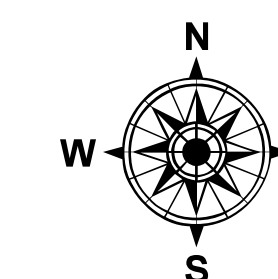
The information on this map is a compilation of Ramsey County Records. THE COUNTY DOES NOT WARRANT OR GUARANTEE THE ACCURACY OF THIS DATA. The County disclaims any liability for any injuries, time delays, or expenses you may suffer if you rely in any manner on the accuracy of this data.

Produced by Information Services Enterprise GIS Division  
RCGSMetaData@Co.Ramsey.MN.US

NOTE: This is not an official Ramsey County tax lot map. This is based on the data available in the Geographic Information System, which may vary from tax data officially recorded in the Tax System. For an official tax map, please contact the Office of Property Records and Revenue.

651-266-2000  
AskPropertyTaxandRecords@co.ramsey.mn.us

Section 15  
Ramsey County



0 4590 180 270 360  
Feet

1" = 200'

1:2400

N153022

1/3/2025