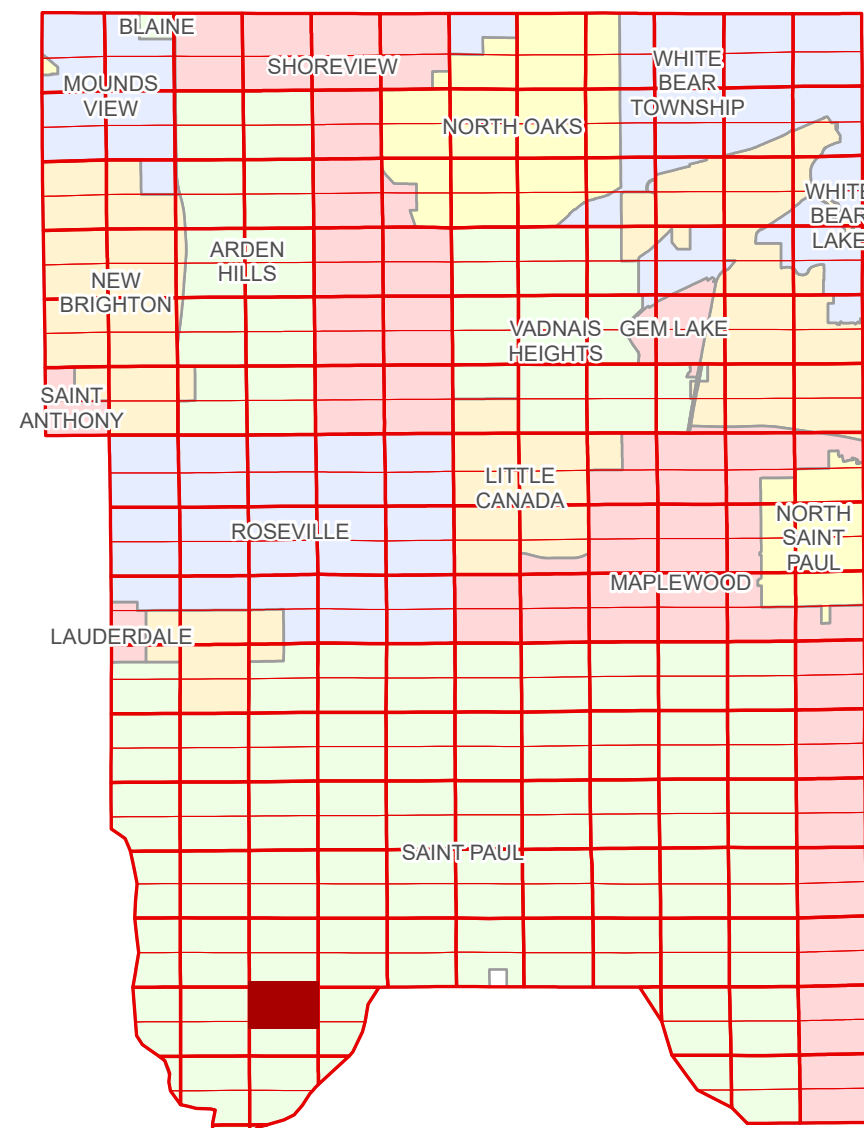
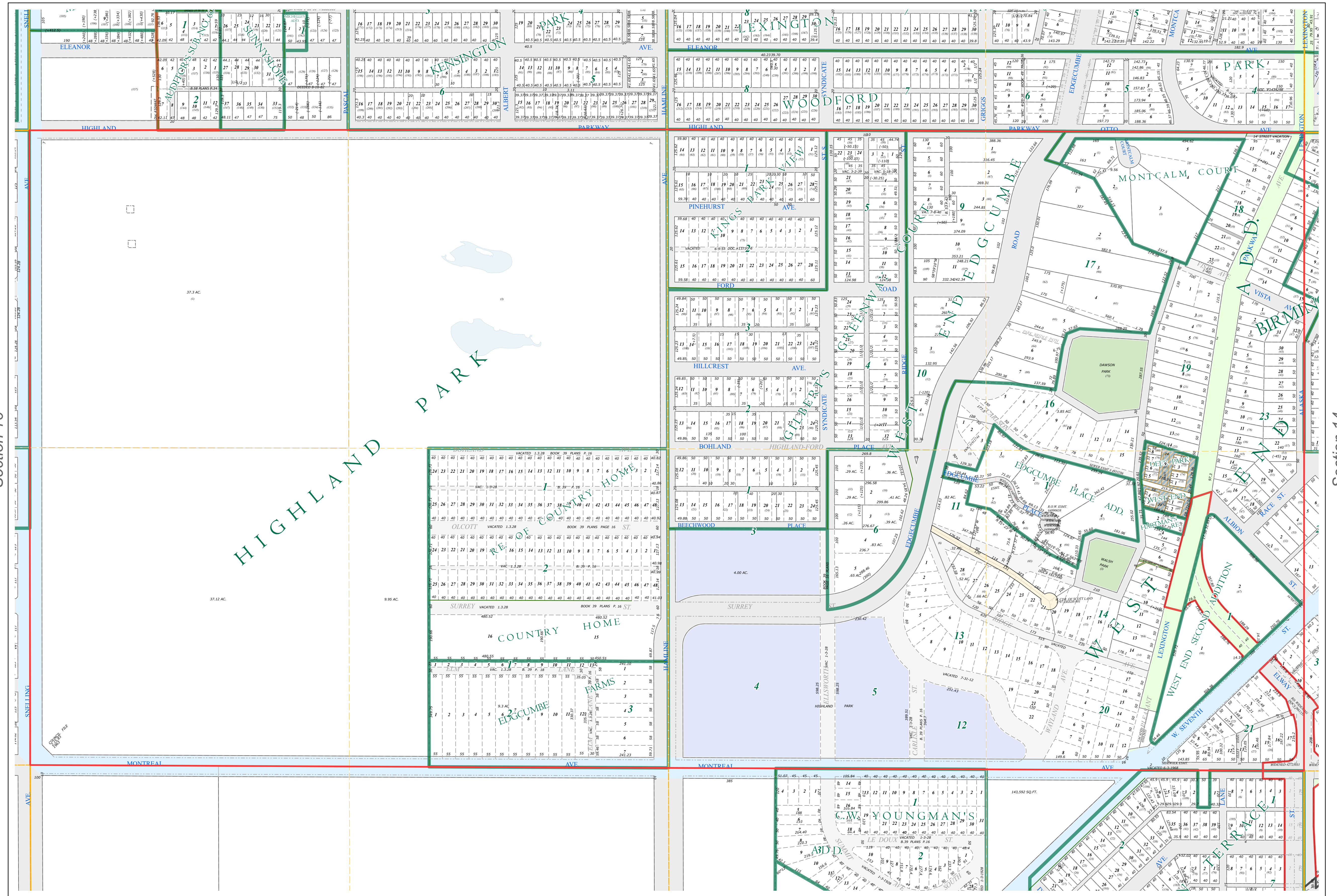


Ramsey County Minnesota Parcel Map

N Half
Section 15
T 28 N
R 23 W

Ramsey County
Section 10



Ramsey County
Section 16

Section 14
Ramsey County

Legend	
	Section
	Quarter
	Quarter Quarter
	State Right of Way
	County Right of Way
	Municipal Right of Way
	Subdivision Plat
	Auditors's Subdivision
	Highway RoW Plat
	Lot
	Other
	Park
	Metes & Bounds
	Tax Parcel Type
	Personal Property
	Real Property
	Easement Type
	Pedestrian
	Private Access
	Private Driveway
	Utility, Storm & Sanitary Sewer
	Drainage & Utility

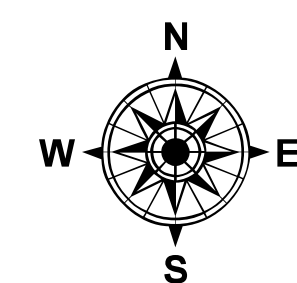
The information on this map is a compilation of Ramsey County tax lot records. THE COUNTY DOES NOT WARRANT OR GUARANTEE THE ACCURACY OF THIS DATA. The County disclaims any liability for any injuries, time delays, or expenses you may suffer if you rely in any manner on the accuracy of this data.

Produced by Information Services Enterprise GIS Division
RCGISMetaData@Co.Ramsey.MN.US

NOTE: This is not an official Ramsey County tax lot map. This is based on the data available in the Geographic Information System, which may vary from tax data officially recorded in the Tax System. For an official tax map, please contact the Office of Property Records and Revenue.

651-266-2000
AskPropertyTaxandRecords@co.ramsey.mn.us

Section 15
Ramsey County



0 4590 180 270 360
Feet

1" = 200'

1:2,400

N152823

1/3/2025