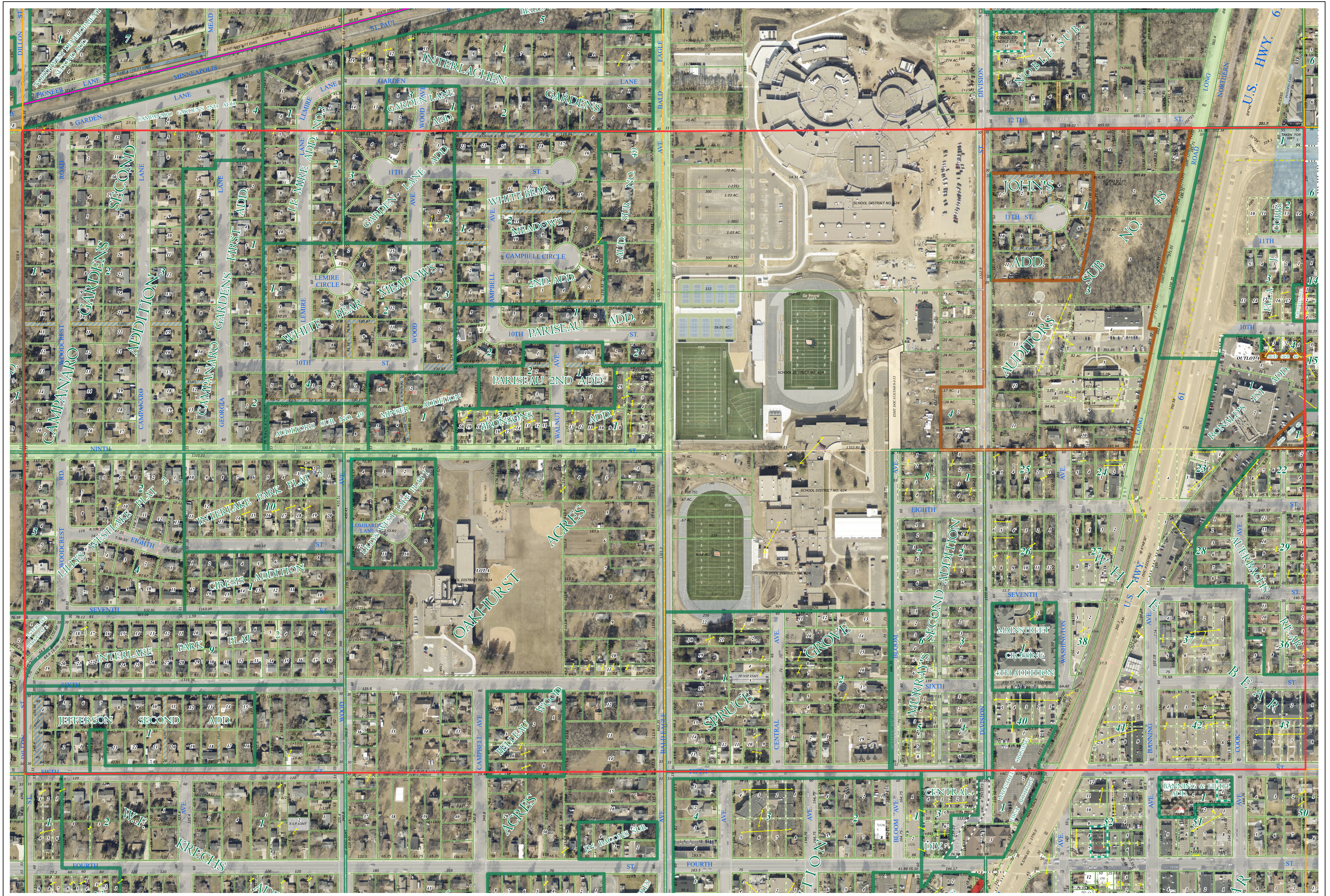
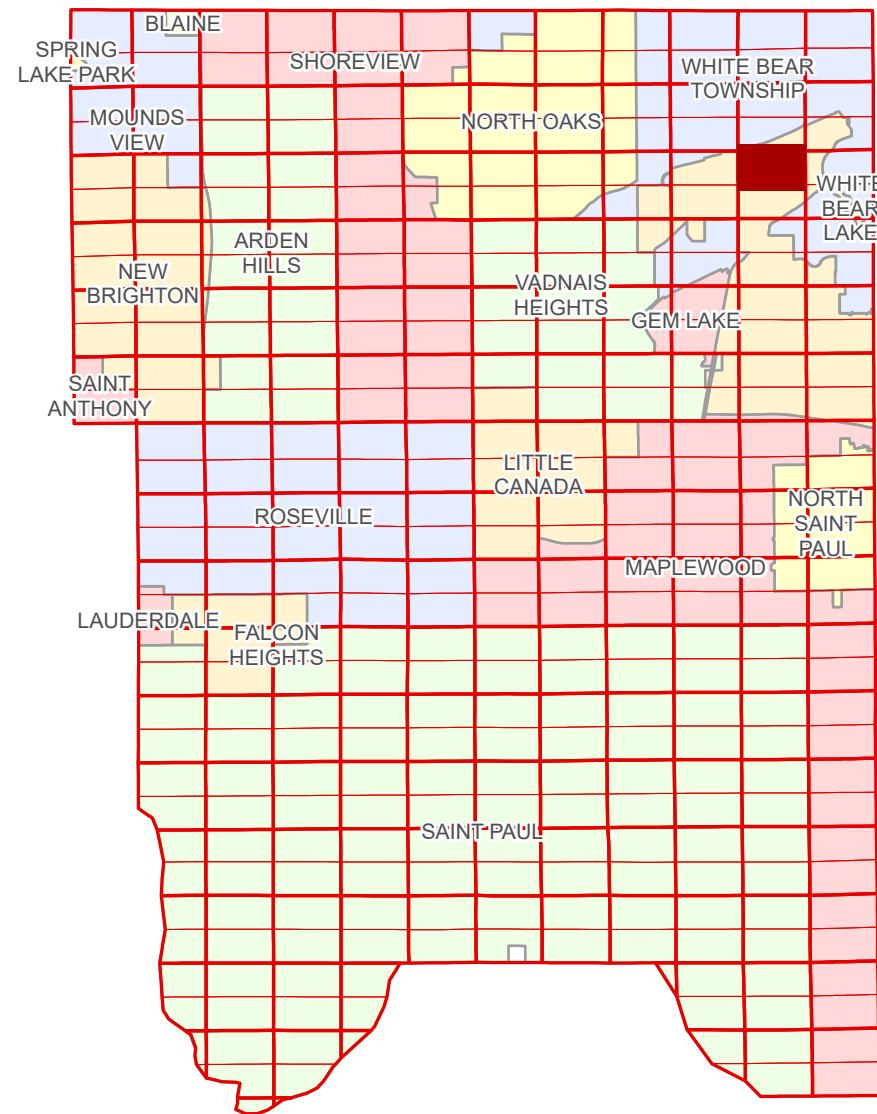


# Ramsey County Minnesota Parcel Map

N Half  
Section 14  
T 30 N  
R 22 W

Ramsey County  
Section 11



Ramsey County  
Section 15

Section 13  
Ramsey County

| Legend |                        |  |                                 |
|--------|------------------------|--|---------------------------------|
|        | Section                |  | Metes & Bounds                  |
|        | Quarter                |  | Personal Property               |
|        | Quarter Quarter        |  | State Assessed Property         |
|        | Federal Right of Way   |  | Real Property                   |
|        | State Right of Way     |  | Tax Parcel                      |
|        | County Right of Way    |  | Easement Type                   |
|        | Municipal Right of Way |  | Pedestrian                      |
|        | Subdivision Type       |  | Private Access                  |
|        | Auditor's Subdivision  |  | Utility, Storm & Sanitary Sewer |
|        | Division Type          |  | Drainage & Utility              |
|        | Lot                    |  | Misc Easements                  |

Aerial Imagery Date: March 11 - April 4, 2024

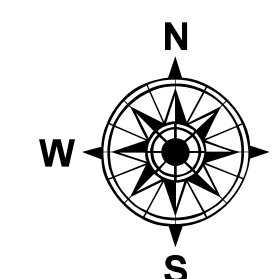
The information on this map is a compilation of Ramsey County Records. THE COUNTY DOES NOT WARRANT OR GUARANTEE THE ACCURACY OF THIS DATA. The County disclaims any liability for any injuries, time delays, or expenses you may suffer if you rely in any manner on the accuracy of this data.

NOTE: This is not an official Ramsey County tax lot map. This is based on the data available in the Geographic Information System, which may vary from tax data officially recorded in the Tax System. For an official tax map, please contact the Office of Property Records and Revenue.

Produced by Information Services Enterprise GIS Division  
RCGISMetaData@Co.Ramsey.MN.US

651-266-2000  
AskPropertyTaxandRecords@co.ramsey.mn.us

Section 14  
Ramsey County



0 4590 180 270 360 Feet

1" = 200'

1:2,400

N143022

1/3/2025