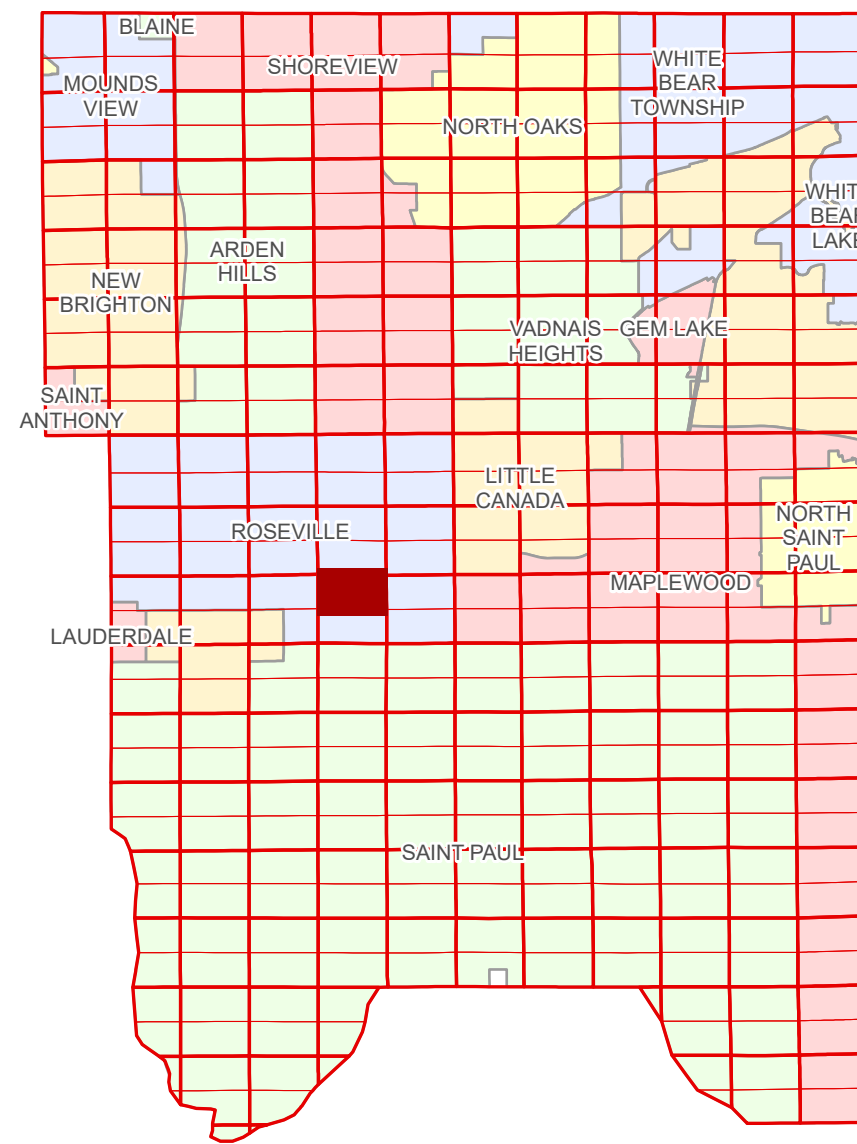


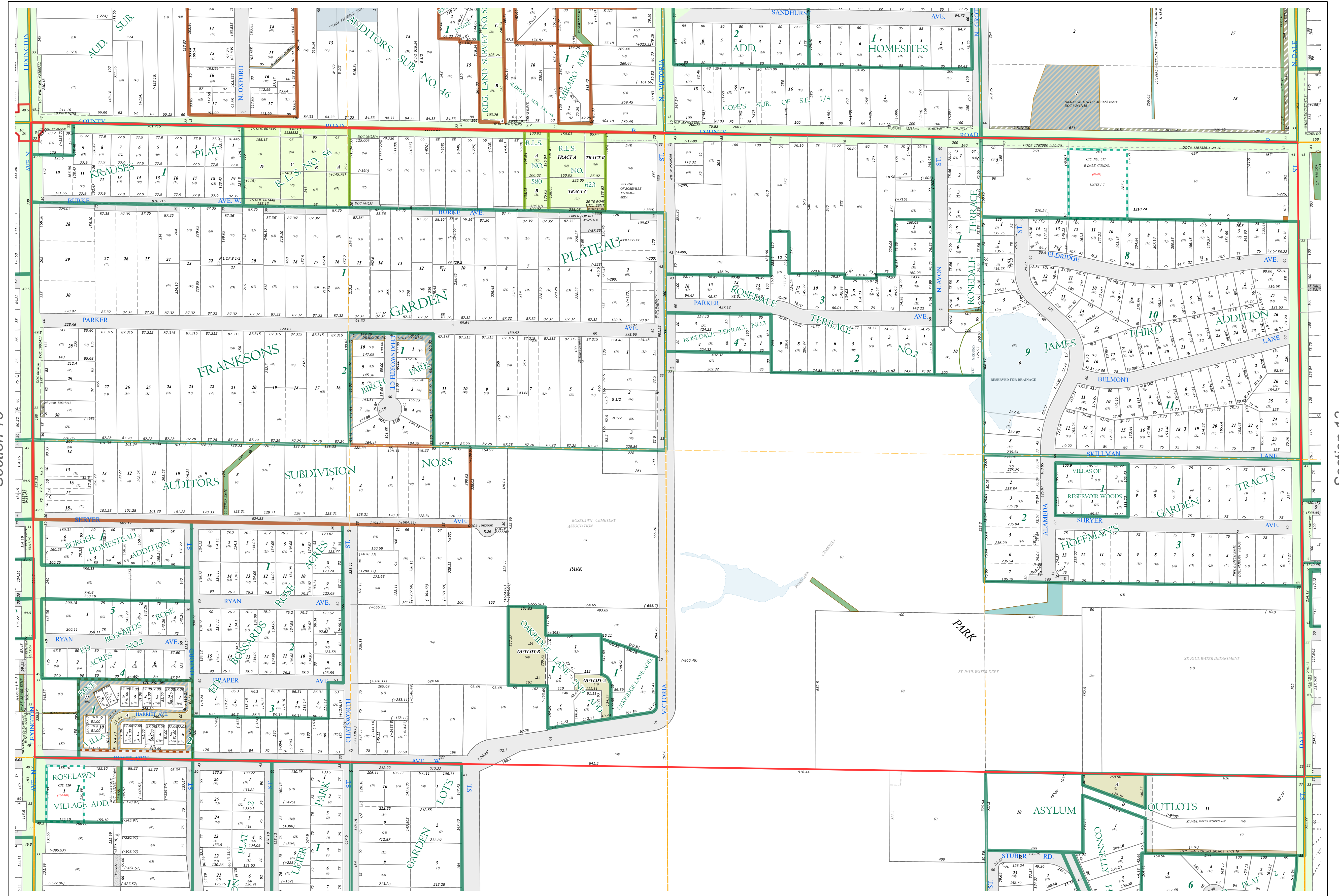
N Half  
Section 14  
T 29 N  
R 23 W

# Ramsey County Minnesota Parcel Map

Ramsey County  
Section 11



Ramsey County  
Section 15

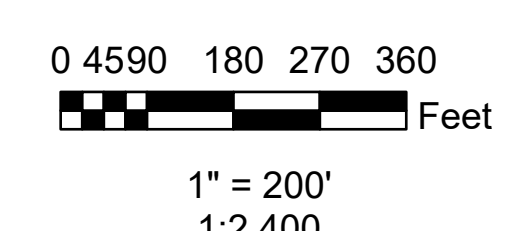
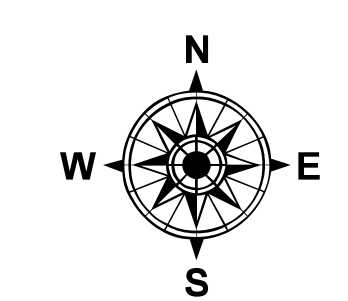


Section 14  
Ramsey County

Legend			
	Section		Metes & Bounds
	Quarter		Tax Parcel Type
	Quarter Quarter		Personal Property
	County Right of Way		Real Property
	Municipal Right of Way		Easement Type
	Subdivision Type		Pedestrian
	Subdivision Plat		Private Driveway
	Registered Land Survey		Public Right of Way
	Auditors's Subdivision		Utility, Communication
	Highway RoW Plat		Utility, Storm & Sanitary Sewer
	Planned Community		Utility, Water
	Condominium		Utility, Unidentified
	Division Type		Drainage & Utility
	Lot		Misc Easements
	Outlot		
	Tract		

The information on this map is a compilation of Ramsey County Records. THE COUNTY DOES NOT WARRANT OR GUARANTEE THE ACCURACY OF THIS DATA. The County disclaims any liability for any injuries, time delays, or expenses you may suffer if you rely in any manner on the accuracy of this data.  
Produced by Information Services Enterprise GIS Division  
RCGSMetaData@Co.Ramsey.MN.US

NOTE: This is not an official Ramsey County tax lot map. This is based on the data available in the Geographic Information System, which may vary from tax data officially recorded in the Tax System. For an official tax map, please contact the Office of Property Records and Revenue.  
651-266-2000  
AskPropertyTaxandRecords@co.ramsey.mn.us



N142923  
1/3/2025

