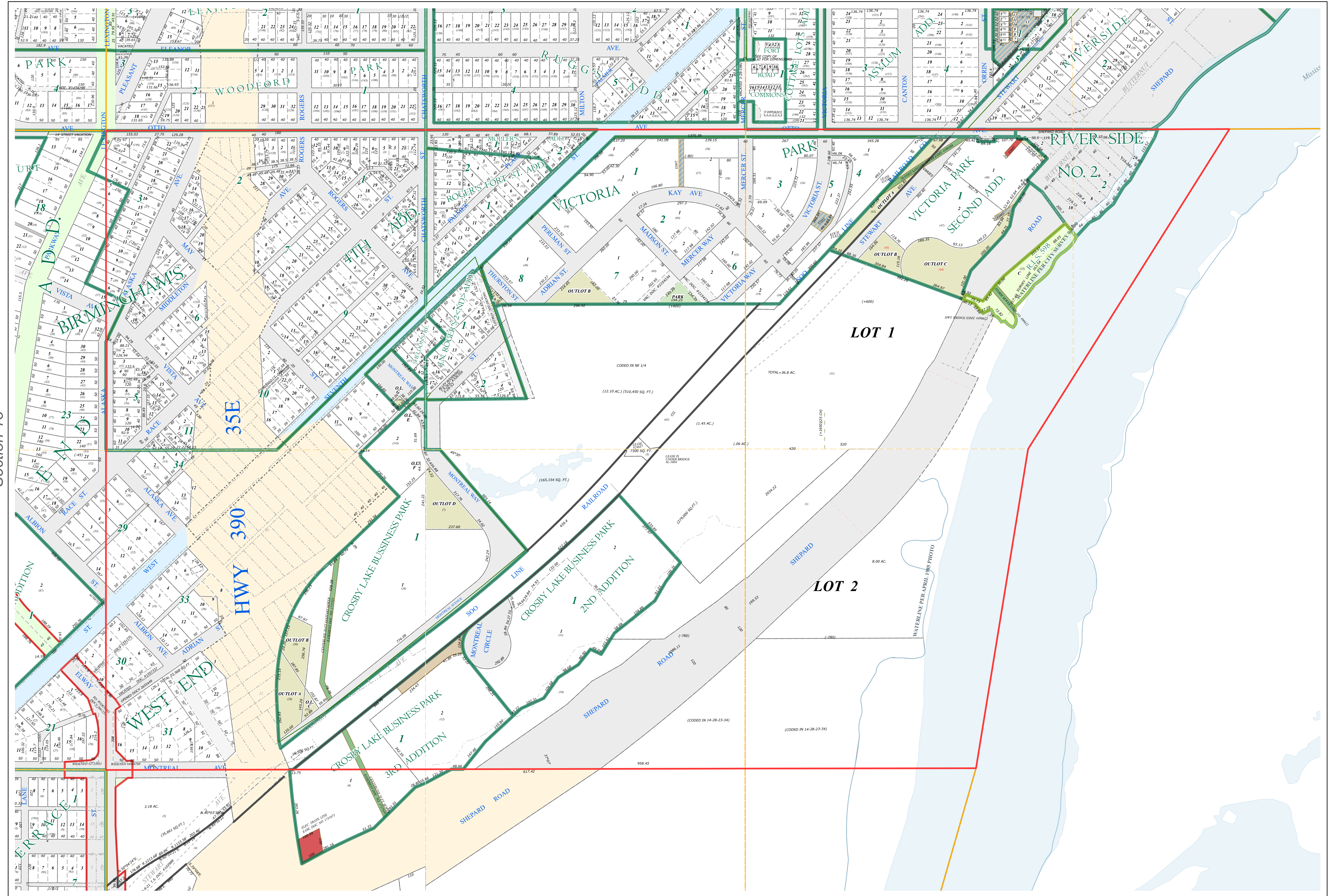
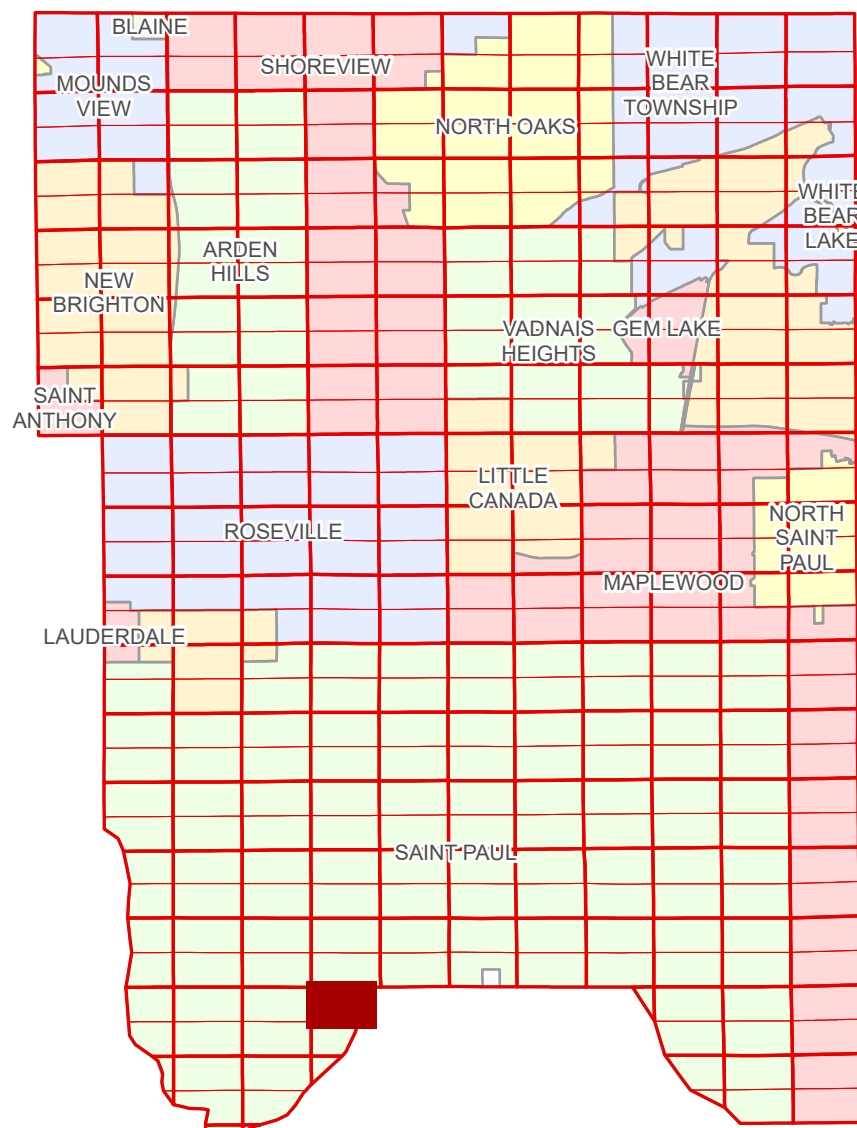


Ramsey County Minnesota Parcel Map

N Half
Section 14
T 28 N
R 23 W

Ramsey County
Section 11



Ramsey County
Section 15

Section 13
Dakota County

Legend			
	Section		Division Type
	Quarter		Lot
	Quarter Quarter		Outlot
	Federal Right of Way		Park
	State Right of Way		Tract
	County Right of Way		Metes & Bounds
	Municipal Right of Way		Tax Parcel Type
	Subdivision Type		Personal Property
	Subdivision Plat		State Assessed Property
	Registered Land Survey		Real Property
	Highway RoW Plat		Easement Type
			Utility, Electric
			Utility, Storm & Sanitary Sewer
			Utility, Unidentified
			Drainage & Utility

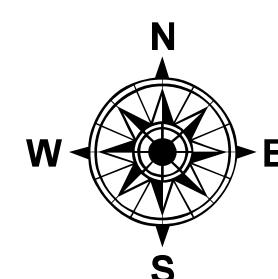
The information on this map is a compilation of Ramsey County Records. THE COUNTY DOES NOT WARRANT OR GUARANTEE THE ACCURACY OF THIS DATA. The County disclaims any liability for any injuries, time delays, or expenses you may suffer if you rely in any manner on the accuracy of this data.

NOTE: This is not an official Ramsey County tax lot map. This is based on the data available in the Geographic Information System, which may vary from tax data officially recorded in the Tax System. For an official tax map, please contact the Office of Property Records and Revenue.

Produced by Information Services Enterprise GIS Division
RCGSMetaData@Co.Ramsey.MN.US

651-266-2000
AskPropertyTaxandRecords@co.ramsey.mn.us

Section 14
Ramsey County



0 4590 180 270 360 Feet

1" = 200'

1:2,400

N142823

1/3/2025