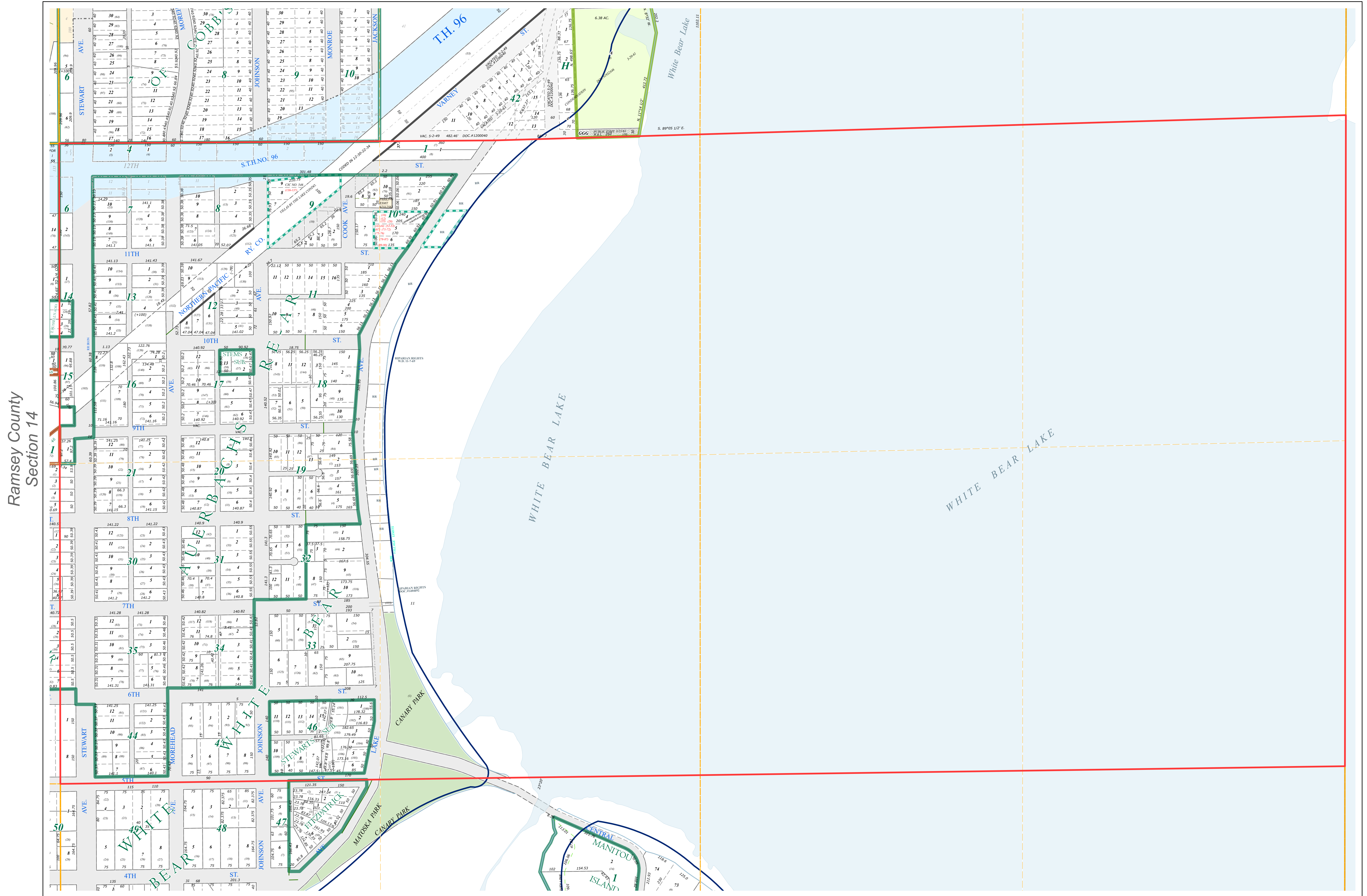
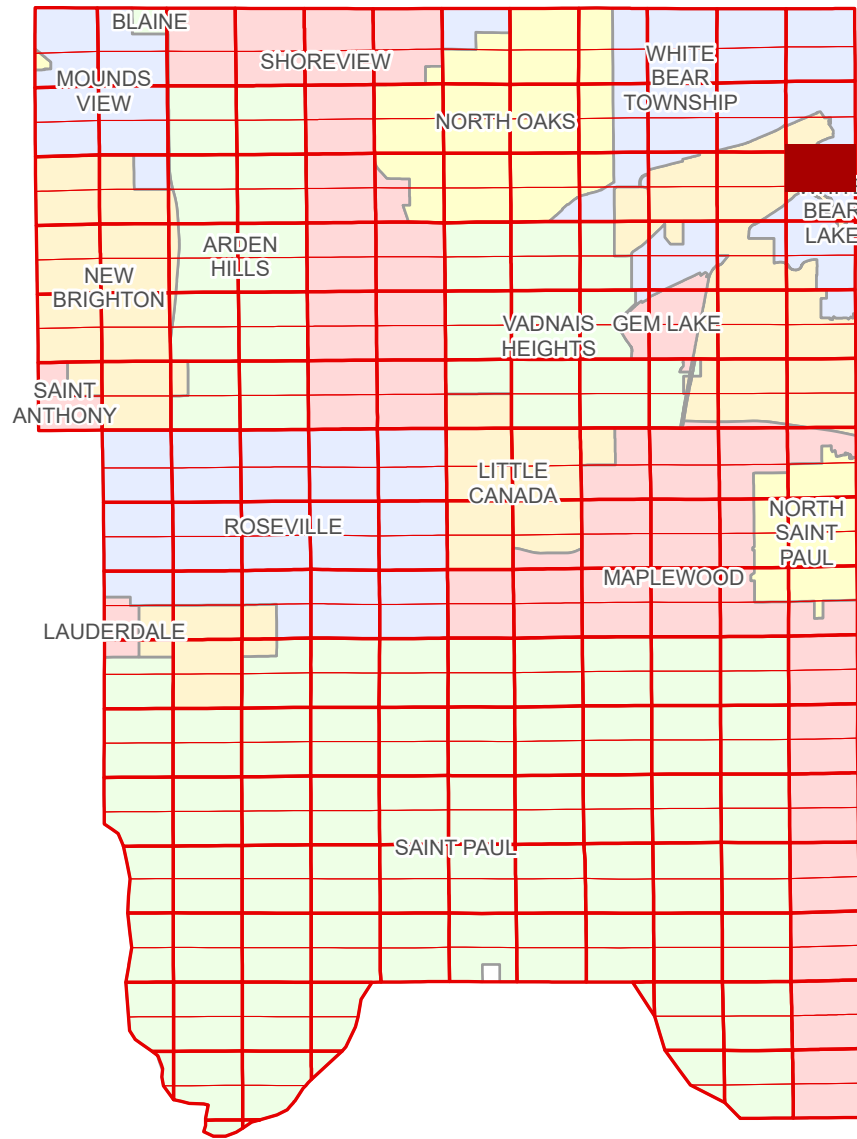


N Half
Section 13
T 30 N
R 22 W

Ramsey County Minnesota Parcel Map

Ramsey County
Section 12



Ramsey County
Section 14

Section 18
Washington County

Section 13
Ramsey County

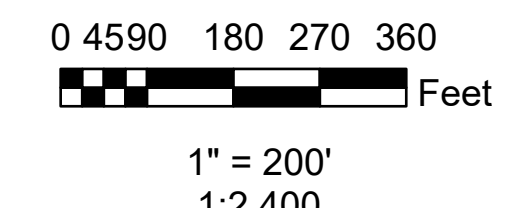
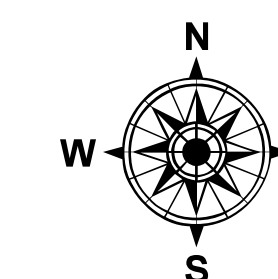
| Legend | | | |
|--------|------------------------|--|-----------------|
| | Section | | Division Type |
| | Quarter | | Lot |
| | Quarter Quarter | | Park |
| | State Right of Way | | Tract |
| | Municipal Right of Way | | Metes & Bounds |
| | Subdivision Type | | Tax Parcel Type |
| | Subdivision Plat | | Real Property |
| | Registered Land Survey | | Easement Type |
| | Auditor's Subdivision | | Private Access |
| | Condominium | | Misc Easements |

The information on this map is a compilation of Ramsey County Records. THE COUNTY DOES NOT WARRANT OR GUARANTEE THE ACCURACY OF THIS DATA. The County disclaims any liability for any injuries, time delays, or expenses you may suffer if you rely in any manner on the accuracy of this data.

Produced by Information Services Enterprise GIS Division
RCGISMetaData@Co.Ramsey.MN.US

NOTE: This is not an official Ramsey County tax lot map. This is based on the data available in the Geographic Information System, which may vary from tax data officially recorded in the Tax System. For an official tax map, please contact the Office of Property Records and Revenue.

651-266-2000
AskPropertyTaxandRecords@co.ramsey.mn.us



N133022
1/3/2025