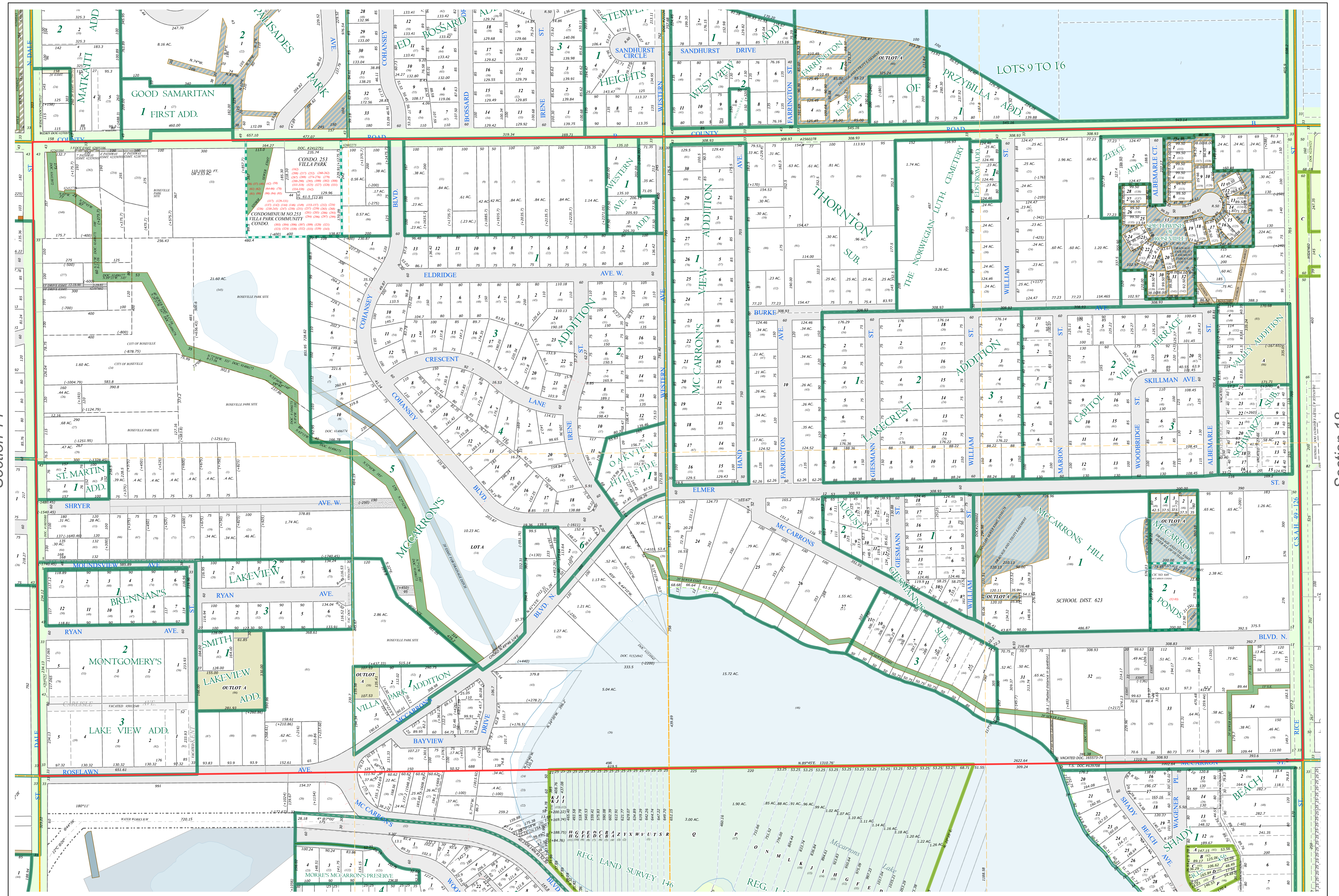
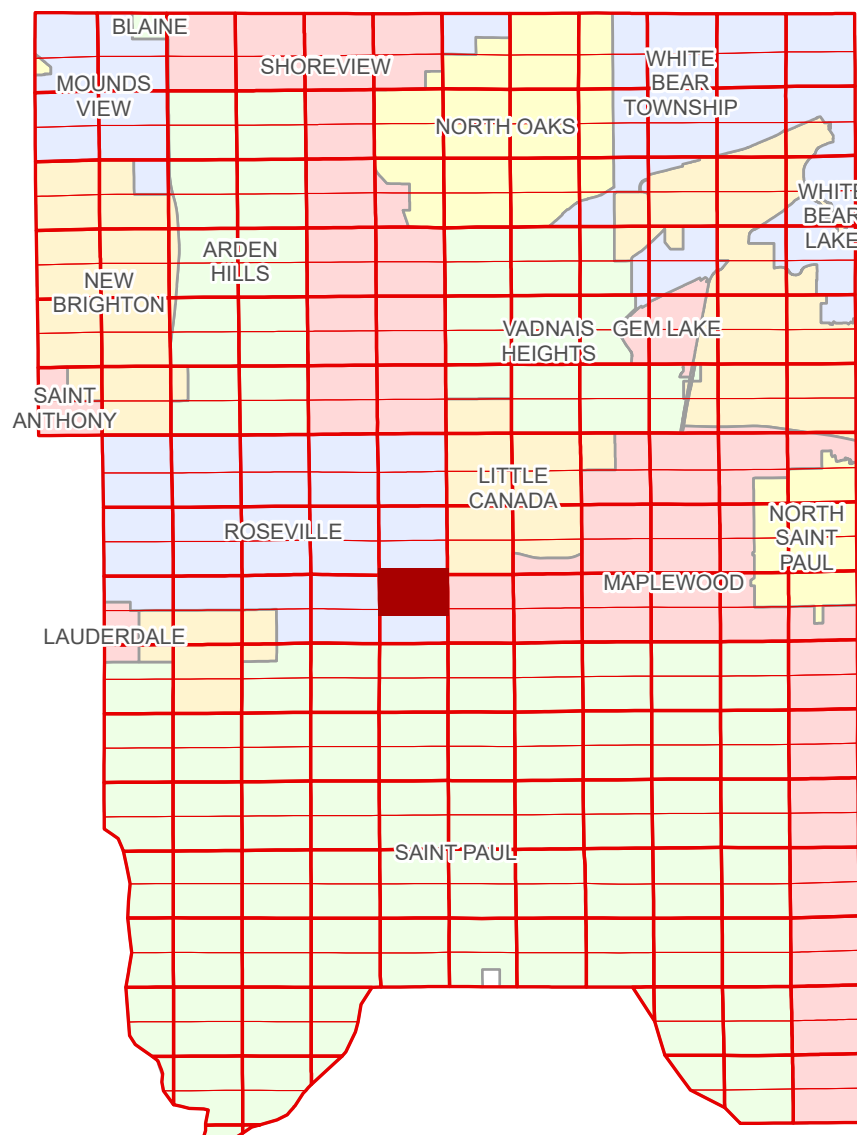


Ramsey County Minnesota Parcel Map

N Half
Section 13
T 29 N
R 23 W

Ramsey County
Section 12



Ramsey County
Section 14

Section 18
Ramsey County

Legend			
	Section		Metes & Bounds
	Quarter		Tax Parcel Type
	Quarter Quarter		Real Property
	County Right of Way		Easement Type
	Municipal Right of Way		Pedestrian
	Subdivision Type		Private Access
	Subdivision Plat		Private Driveway
	Registered Land Survey		Utility, Storm & Sanitary Sewer
	Planned Community		Utility, Unidentified
	Condominium		Drainage & Utility
	Division Type		Drainage
	Lot		Misc Easements
	Outlot		
	Tract		

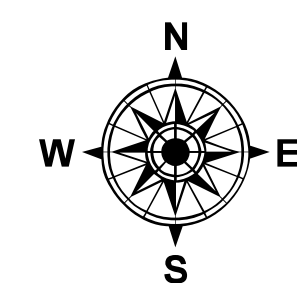
The information on this map is a compilation of Ramsey County Records. THE COUNTY DOES NOT WARRANT OR GUARANTEE THE ACCURACY OF THIS DATA. The County disclaims any liability for any injuries, time delays, or expenses you may suffer if you rely in any manner on the accuracy of this data.

NOTE: This is not an official Ramsey County tax lot map. This is based on the data available in the Geographic Information System, which may vary from tax data officially recorded in the Tax System. For an official tax map, please contact the Office of Property Records and Revenue.

Produced by Information Services Enterprise GIS Division
RCGSMetaData@Co.Ramsey.MN.US

651-266-2000
AskPropertyTaxandRecords@co.ramsey.mn.us

Section 13
Ramsey County



0 4590 180 270 360
Feet

1" = 200'
1:2,400

N132923

1/3/2025