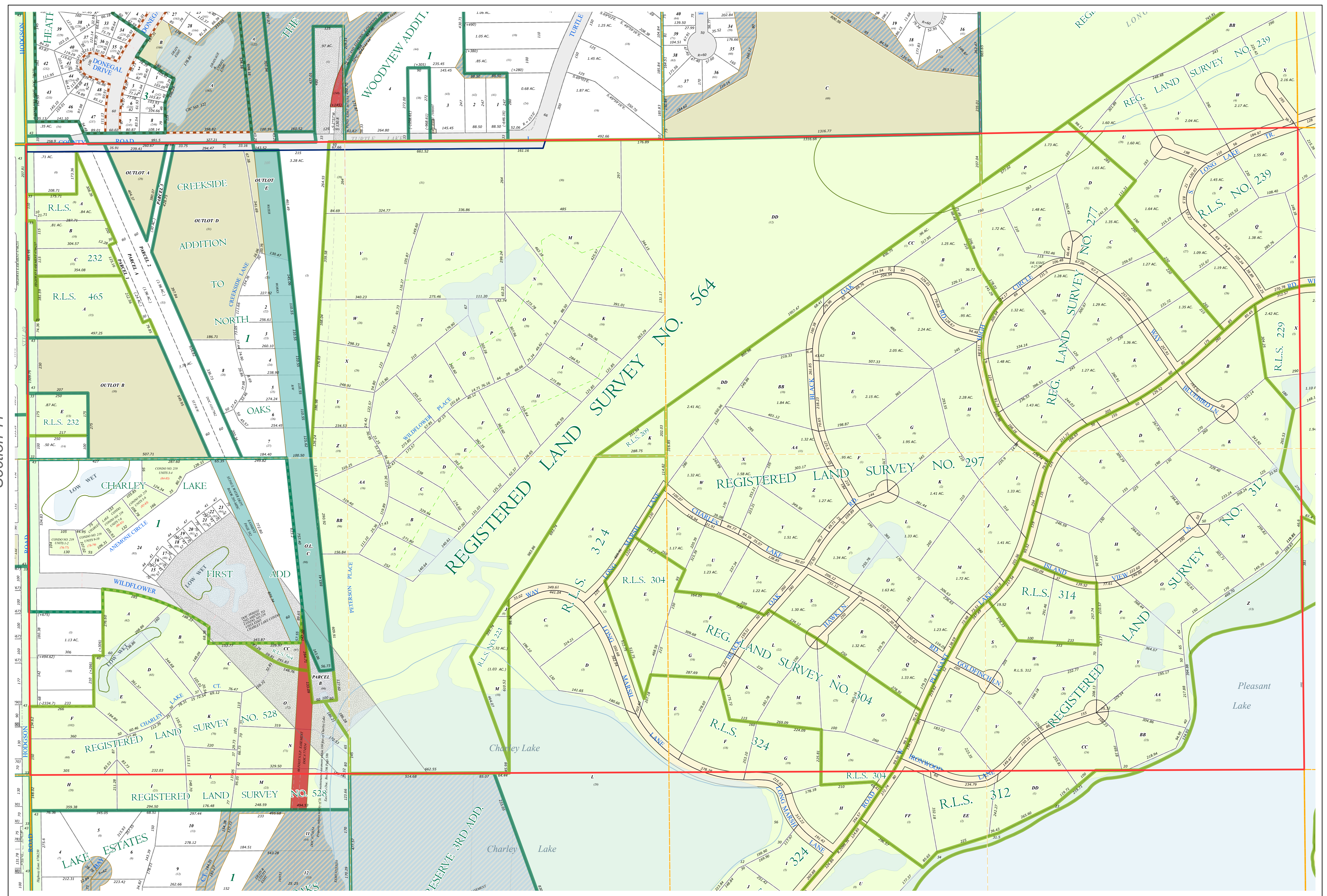
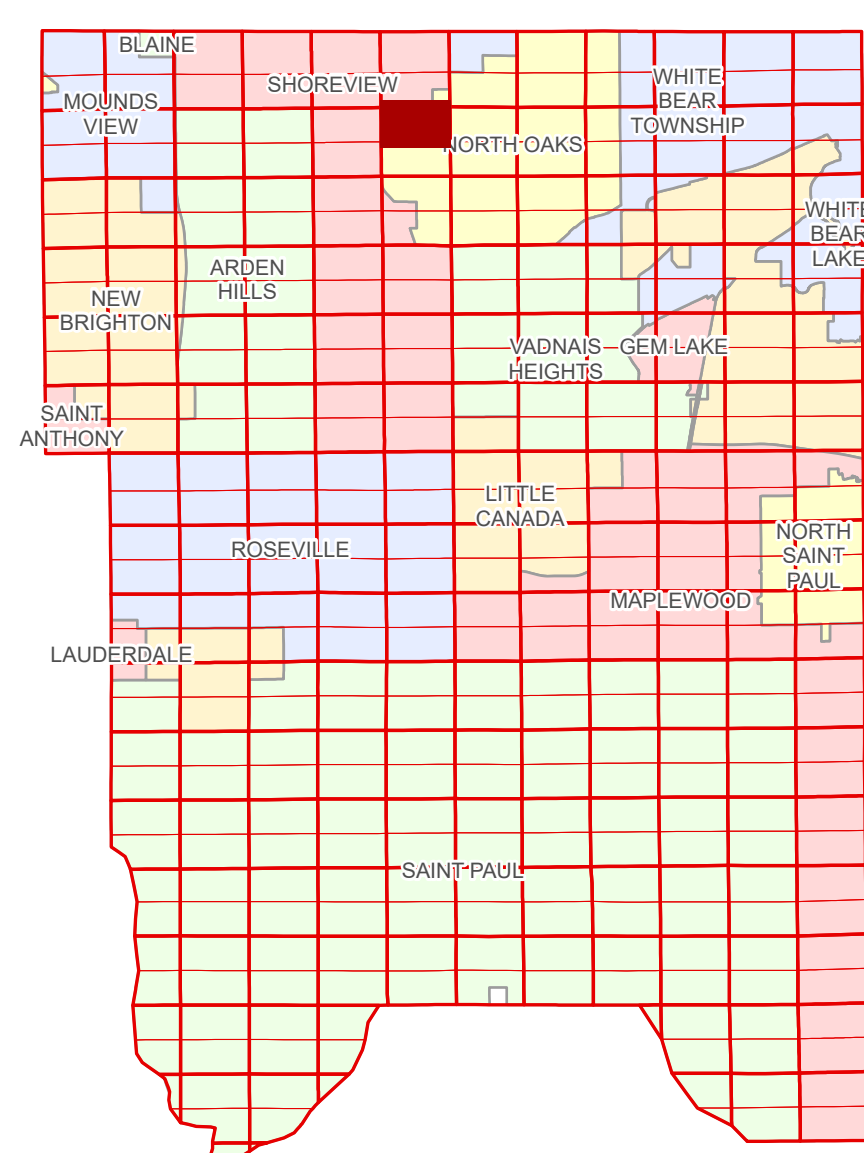


# Ramsey County Minnesota Parcel Map

N Half  
Section 12  
T 30 N  
R 23 W

Ramsey County  
Section 1



Legend	
	Section
	Quarter
	Quarter Quarter
	County Right of Way
	Municipal Right of Way
	Subdivision Plat
	Registered Land Survey
	Condominium
	Division Type Lot
	Other
	Outlot
	Tract
	Metes & Bounds
	Tax Parcel Type Real Property
	Easement Type Private Access
	Utility, Electric
	Utility, Water
	Misc Easements

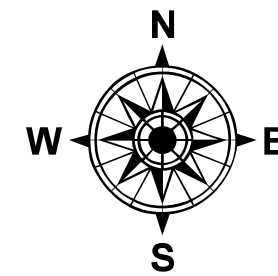
The information on this map is a compilation of Ramsey County Records. THE COUNTY DOES NOT WARRANT OR GUARANTEE THE ACCURACY OF THIS DATA. The County disclaims any liability for any injuries, time delays, or expenses you may suffer if you rely in any manner on the accuracy of this data.

Produced by Information Services Enterprise GIS Division  
RCGSMetaData@Co.Ramsey.MN.US

NOTE: This is not an official Ramsey County tax lot map. This is based on the data available in the Geographic Information System, which may vary from tax data officially recorded in the Tax System. For an official tax map, please contact the Office of Property Records and Revenue.

651-266-2000  
AskPropertyTaxandRecords@co.ramsey.mn.us

Section 12  
Ramsey County



0 450 900 1800 3600 Feet

1" = 200'

1:2400

N123023

1/3/2025

