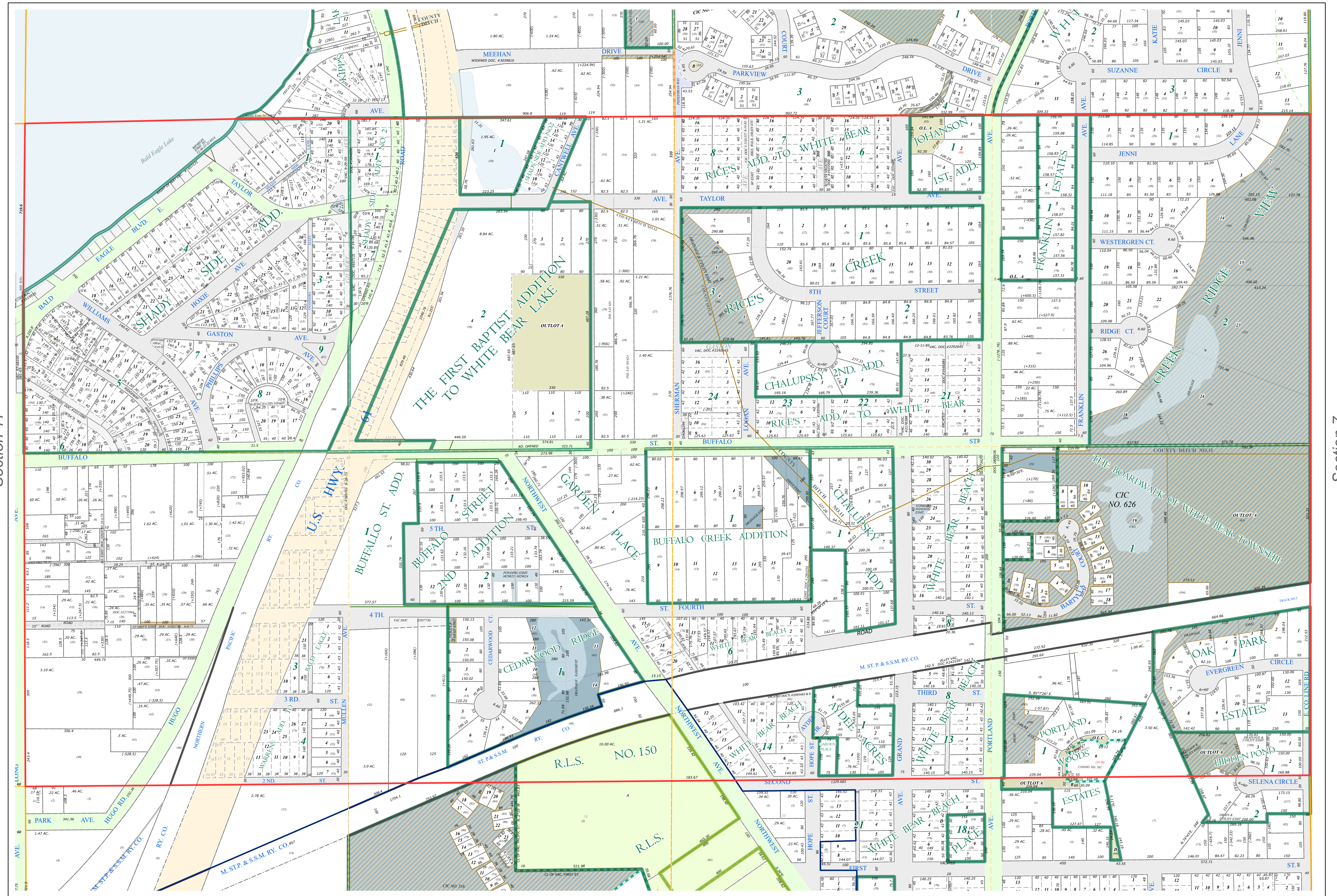
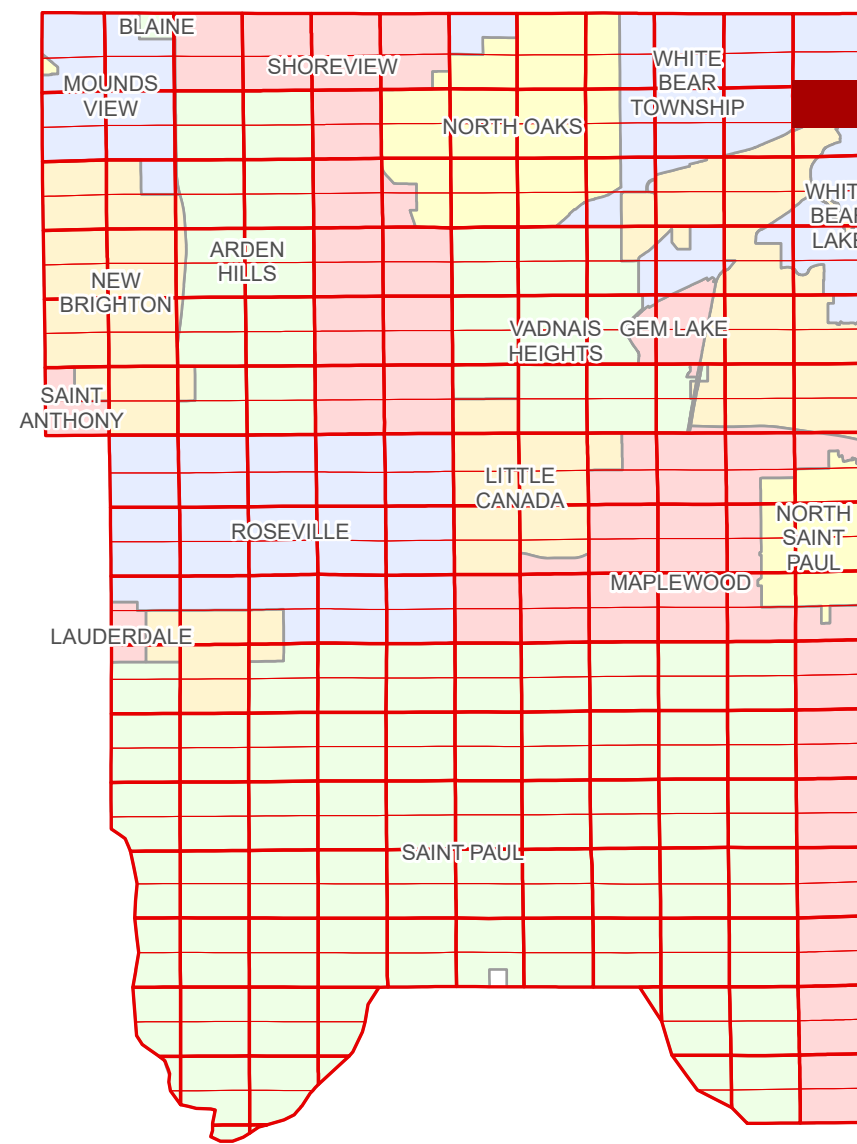


N Half  
Section 12  
T 30 N  
R 22 W

# Ramsey County Minnesota Parcel Map

Ramsey County  
Section 1



Ramsey County  
Section 11

Section 7  
Washington County

| Legend |                        |  |                         |
|--------|------------------------|--|-------------------------|
|        | Section                |  | Metes & Bounds          |
|        | Quarter                |  | Tax Parcel Type         |
|        | Quarter Quarter        |  | State Assessed Property |
|        | Federal Right of Way   |  | Real Property           |
|        | County Right of Way    |  | Easement Type           |
|        | Municipal Right of Way |  | Ponding                 |
|        | Subdivision Type       |  | Pedestrian              |
|        | Subdivision Plat       |  | Private Access          |
|        | Registered Land Survey |  | Private Driveway        |
|        | Planned Community      |  | Utility, Unidentified   |
|        | Condominium            |  | Drainage & Utility      |
|        | Division Type          |  | Drainage                |
|        | Lot                    |  |                         |
|        | Other                  |  |                         |
|        | Outlot                 |  |                         |
|        | Tract                  |  |                         |

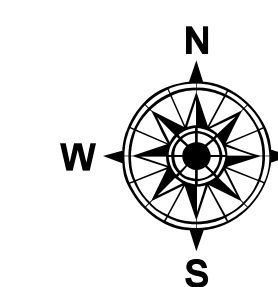
The information on this map is a compilation of Ramsey County Records. THE COUNTY DOES NOT WARRANT OR GUARANTEE THE ACCURACY OF THIS DATA. The County disclaims any liability for any injuries, time delays, or expenses you may suffer if you rely in any manner on the accuracy of this data.

Produced by Information Services Enterprise GIS Division  
RCGISMataData@Co.Ramsey.MN.US

NOTE: This is not an official Ramsey County tax lot map. This is based on the data available in the Geographic Information System, which may vary from tax data officially recorded in the Tax System. For an official tax map, please contact the Office of Property Records and Revenue.

651-266-2000  
AskPropertyTaxandRecords@co.ramsey.mn.us

Section 12  
Ramsey County



0 4590 180 270 360  
Feet

1" = 200'  
1:2400

N123022

1/3/2025