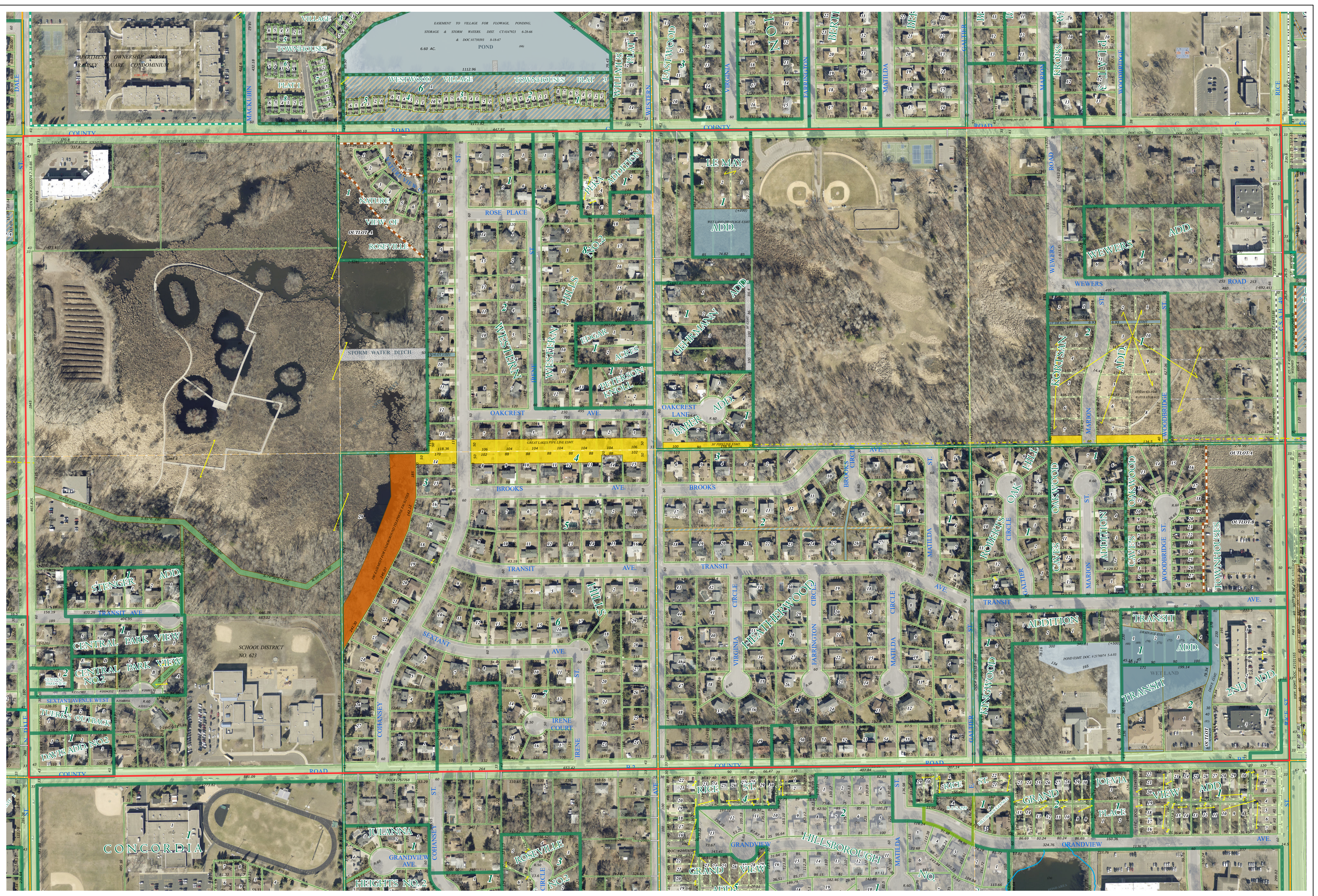
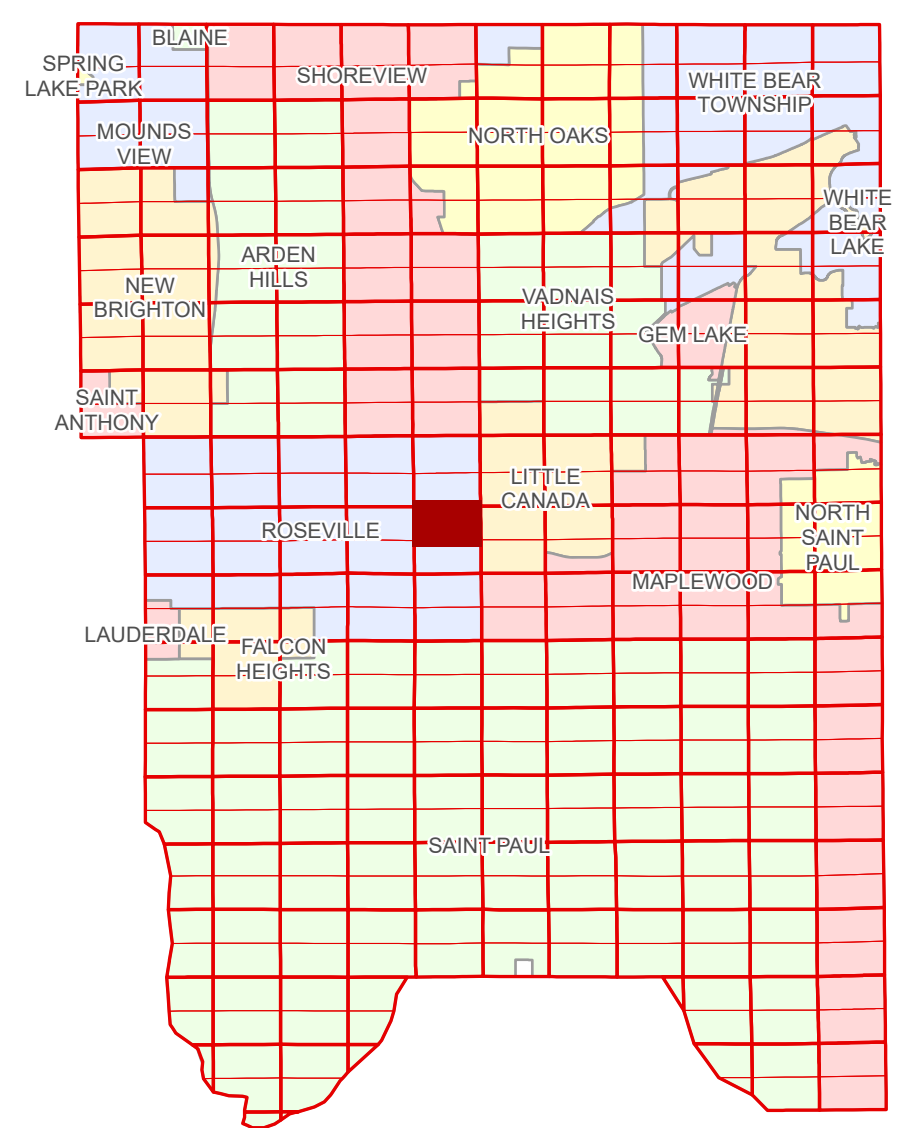


Ramsey County Minnesota Parcel Map

Ramsey County
Section 1

N Half
Section 12
T 29 N
R 23 W



Ramsey County
Section 11

Section 7
Ramsey County

Legend

	Section		Real Property
	Quarter		Easement Type
	Quarter Quarter		Pedestrian
	County Right of Way		Utility, Gas & Oil
	Municipal Right of Way		Utility, Communication
Subdivision Type			Utility, Storm & Sanitary Sewer
	Subdivision Plat		Utility, Unidentified
	Planned Community		Drainage & Utility
Division Type			Drainage
	Lot		Misc Easements
	Metes & Bounds		

The information on this map is a compilation of Ramsey County Records. THE COUNTY DOES NOT WARRANT OR GUARANTEE THE ACCURACY OF THIS DATA. The County disclaims any liability for any injuries, time delays, or expenses you may suffer if you rely in any manner on the accuracy of this data.

Produced by Information Services Enterprise GIS Division
RCGISMetaData@Co.Ramsey.MN.US

NOTE: This is not an official Ramsey County tax lot map. This is based on the data available in the Geographic Information System, which may vary from tax data officially recorded in the Tax System. For an official tax map, please contact the Office of Property Records and Revenue.

651-266-2000
AskPropertyTaxandRecords@co.ramsey.mn.us

Section 12
Ramsey County

Aerial Imagery Date: March 11 - April 4, 2024



N122923
1/3/2025