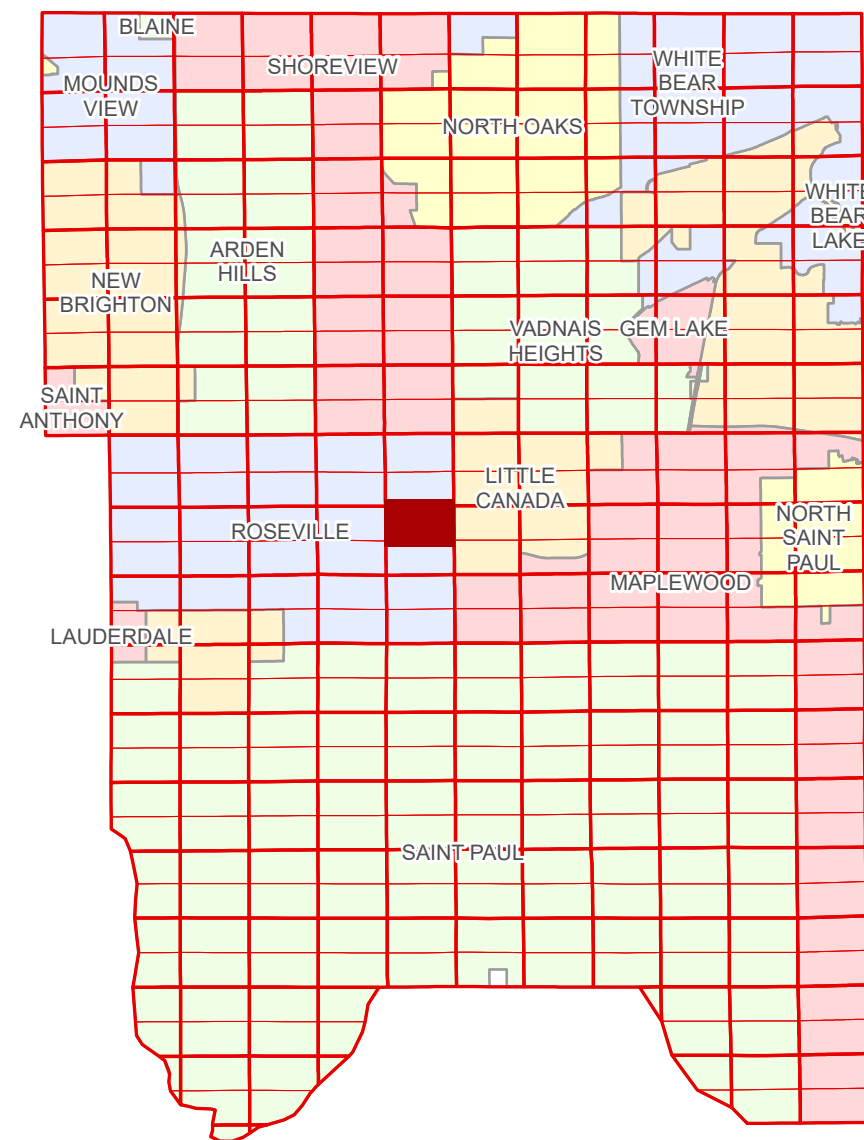


N Half
Section 12
T 29 N
R 23 W

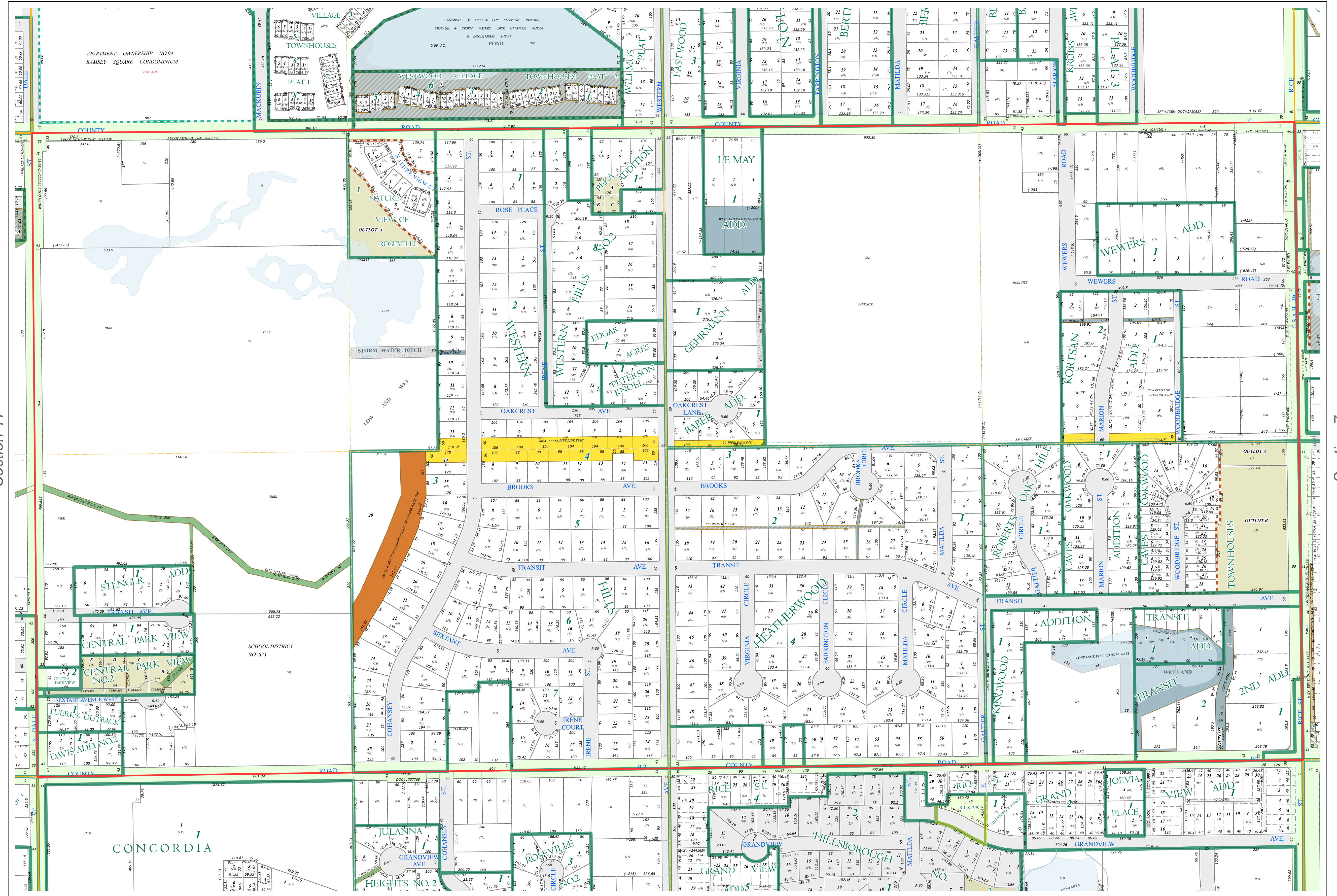
Ramsey County Minnesota Parcel Map

Ramsey County
Section 1



Ramsey County
Section 11

Section 7
Ramsey County



Legend

Section	Real Property
Quarter	Easement
Quarter Quarter	Pond
County Right of Way	Pedestrian
Municipal Right of Way	Utility, Gas & Oil
Subdivision Type	Utility, Communication
Subdivision Plat	Utility, Storm & Sanitary Sewer
Planned Community	Utility, Unidentified
Division Type	Drainage & Utility
Lot	Drainage
Outlot	Misc Easements
Metes & Bounds	

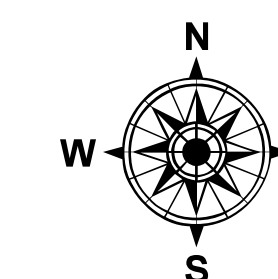
The information on this map is a compilation of Ramsey County tax parcel records. THE COUNTY DOES NOT WARRANT OR GUARANTEE THE ACCURACY OF THIS DATA. The County disclaims any liability for any injuries, time delays, or expenses you may suffer if you rely in any manner on the accuracy of this data.

Produced by Information Services Enterprise GIS Division
RCGSMetaData@Co.Ramsey.MN.US

NOTE: This is not an official Ramsey County tax lot map. This is based on the data available in the Geographic Information System, which may vary from tax data officially recorded in the Tax System. For an official tax map, please contact the Office of Property Records and Revenue.

651-266-2000
AskPropertyTaxandRecords@co.ramsey.mn.us

Section 12
Ramsey County



0 4590 180 270 360
Feet

1" = 200'
1:2,400

N122923

1/3/2025

