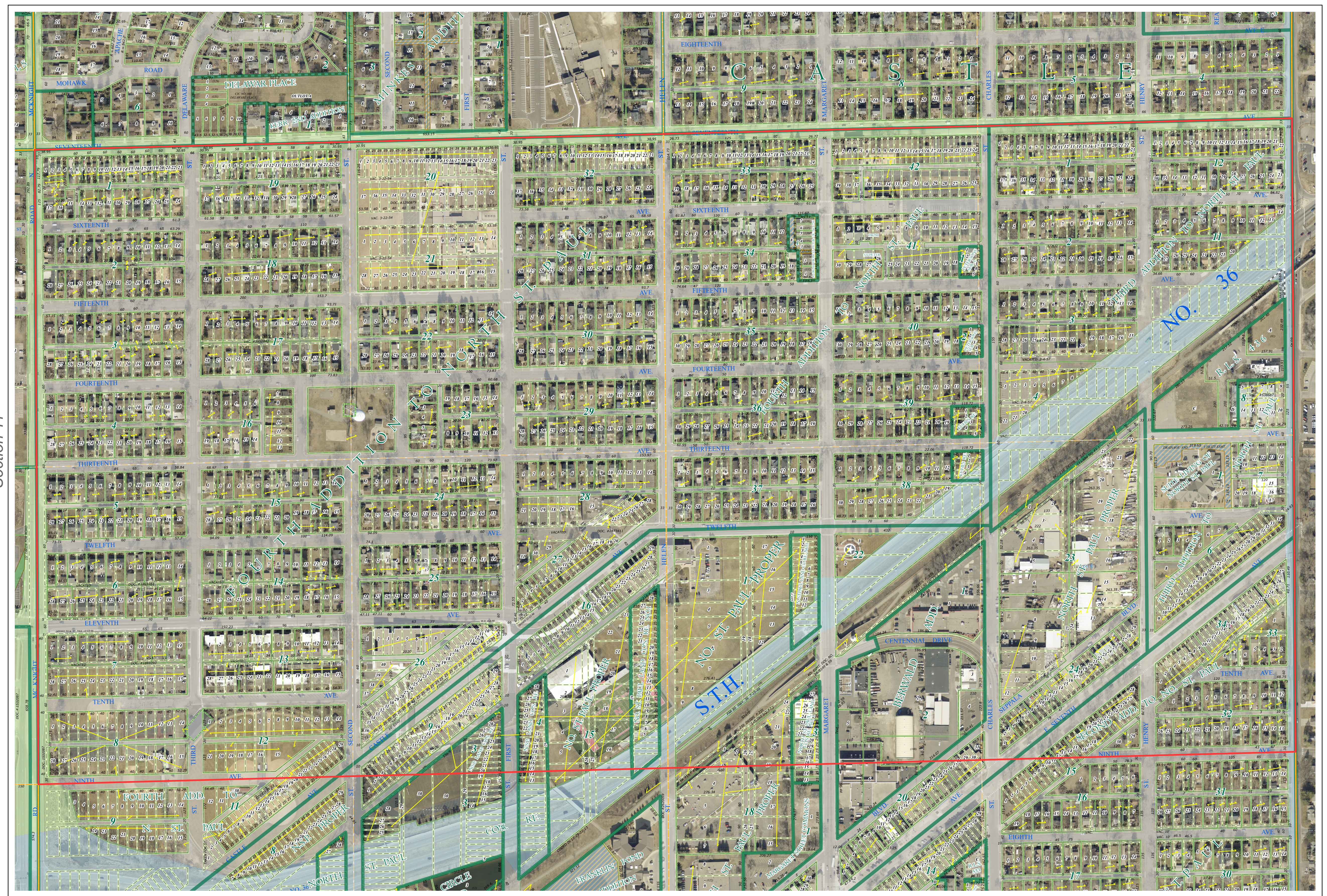
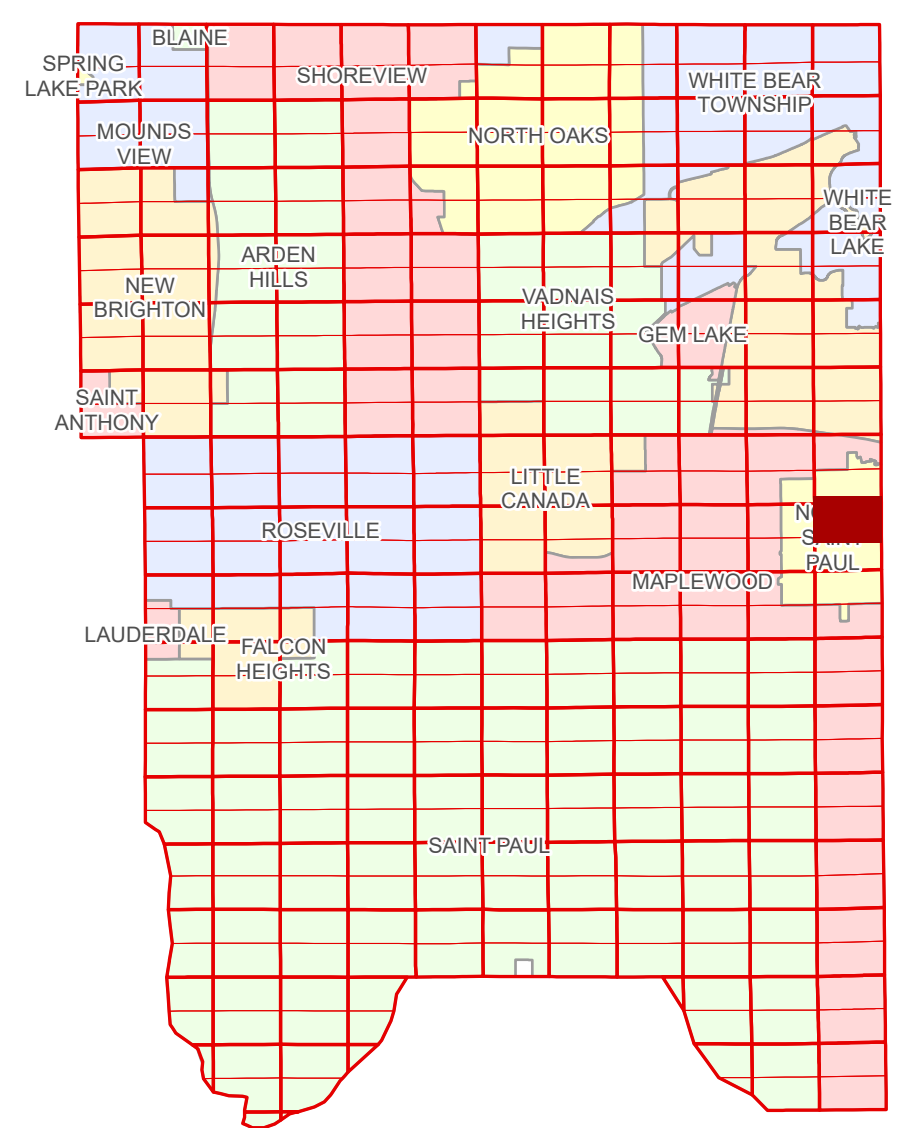


Ramsey County Minnesota Parcel Map

N Half
Section 12
T 29 N
R 22 W

Ramsey County
Section 1



Ramsey County
Section 11

Section 7
Washington County

Legend			
	Section		Planned Community
	Quarter		Division Type
	Quarter Quarter		Lot
	State Right of Way		Metes & Bounds
	County Right of Way		Tax Parcel Type
	Municipal Right of Way		Personal Property
	Subdivision Type		Real Property
	Subdivision Plat		Easement Type
	Registered Land Survey		Drainage & Utility

Aerial Imagery Date: March 11 - April 4, 2024



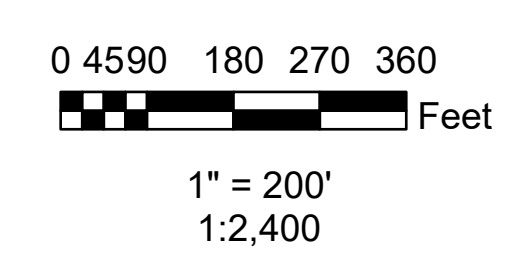
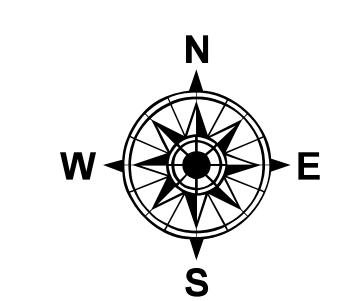
The information on this map is a compilation of Ramsey County Records. THE COUNTY DOES NOT WARRANT OR GUARANTEE THE ACCURACY OF THIS DATA. The County disclaims any liability for any injuries, time delays, or expenses you may suffer if you rely in any manner on the accuracy of this data.

Produced by Information Services Enterprise GIS Division
RCGSMetaData@Co.Ramsey.MN.US

NOTE: This is not an official Ramsey County tax lot map. This is based on the data available in the Geographic Information System, which may vary from tax data officially recorded in the Tax System. For an official tax map, please contact the Office of Property Records and Revenue.

651-266-2000
AskPropertyTaxandRecords@co.ramsey.mn.us

Section 12
Ramsey County



N122922
1/3/2025