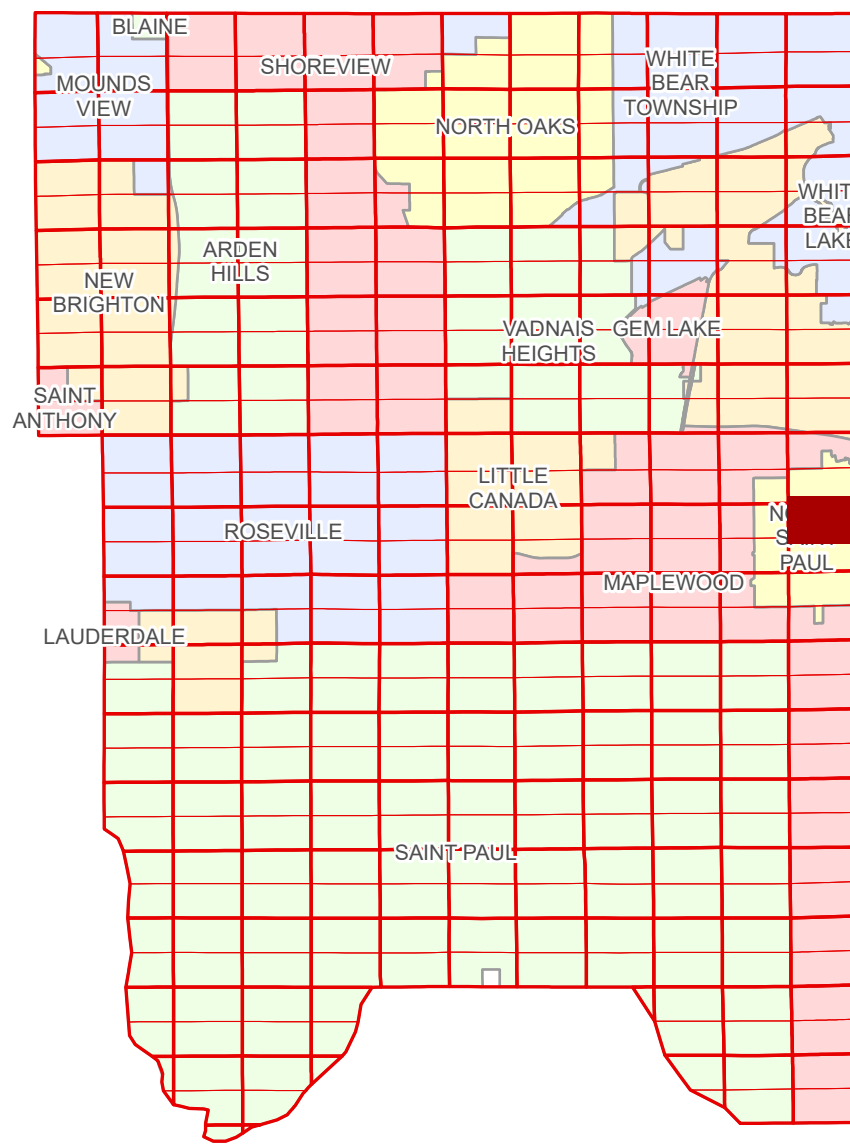


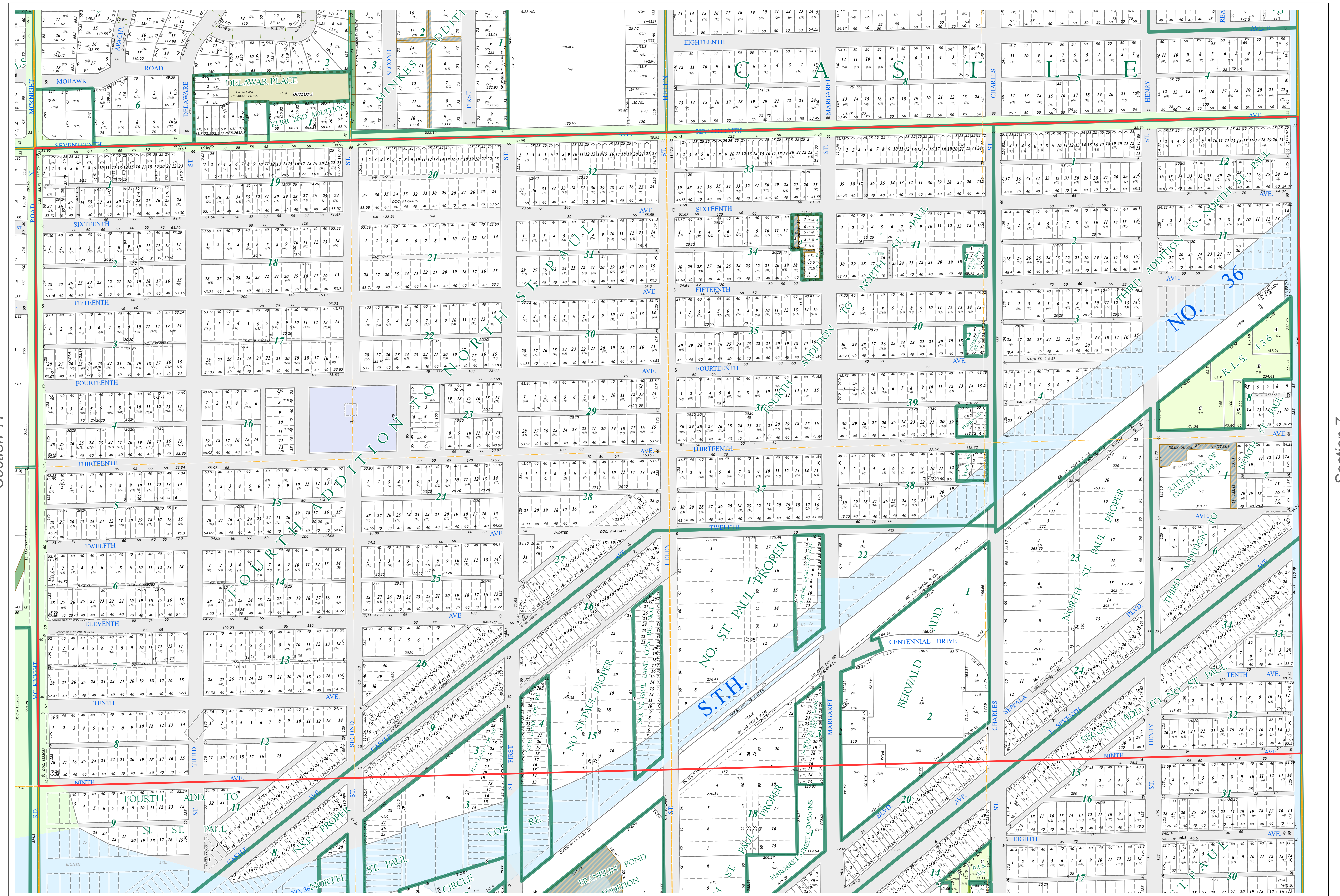
N Half  
Section 12  
T 29 N  
R 22 W

# Ramsey County Minnesota Parcel Map

Ramsey County  
Section 1



Ramsey County  
Section 11



Section 7  
Washington County

**Legend**

Section	Division Type
Quarter	Lot
Quarter Quarter	Other
State Right of Way	Tract
County Right of Way	Metes & Bounds
Municipal Right of Way	<b>Tax Parcel Type</b>
Subdivision Type	Personal Property
Registered Land Survey	Real Property
Planned Community	<b>Easement Type</b>
	Drainage & Utility

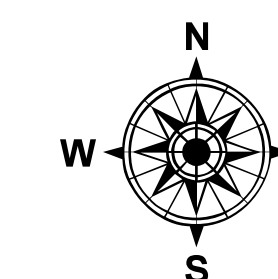
The information on this map is a compilation of Ramsey County Records. THE COUNTY DOES NOT WARRANT OR GUARANTEE THE ACCURACY OF THIS DATA. The County disclaims any liability for any injuries, time delays, or expenses you may suffer if you rely in any manner on the accuracy of this data.

NOTE: This is not an official Ramsey County tax lot map. This is based on the data available in the Geographic Information System, which may vary from tax data officially recorded in the Tax System. For an official tax map, please contact the Office of Property Records and Revenue.

Produced by Information Services Enterprise GIS Division  
RCGSMetaData@Co.Ramsey.MN.US

651-266-2000  
AskPropertyTaxandRecords@co.ramsey.mn.us

Section 12  
Ramsey County



0 4590 180 270 360 Feet

1" = 200'  
1:2,400

N122922

1/3/2025