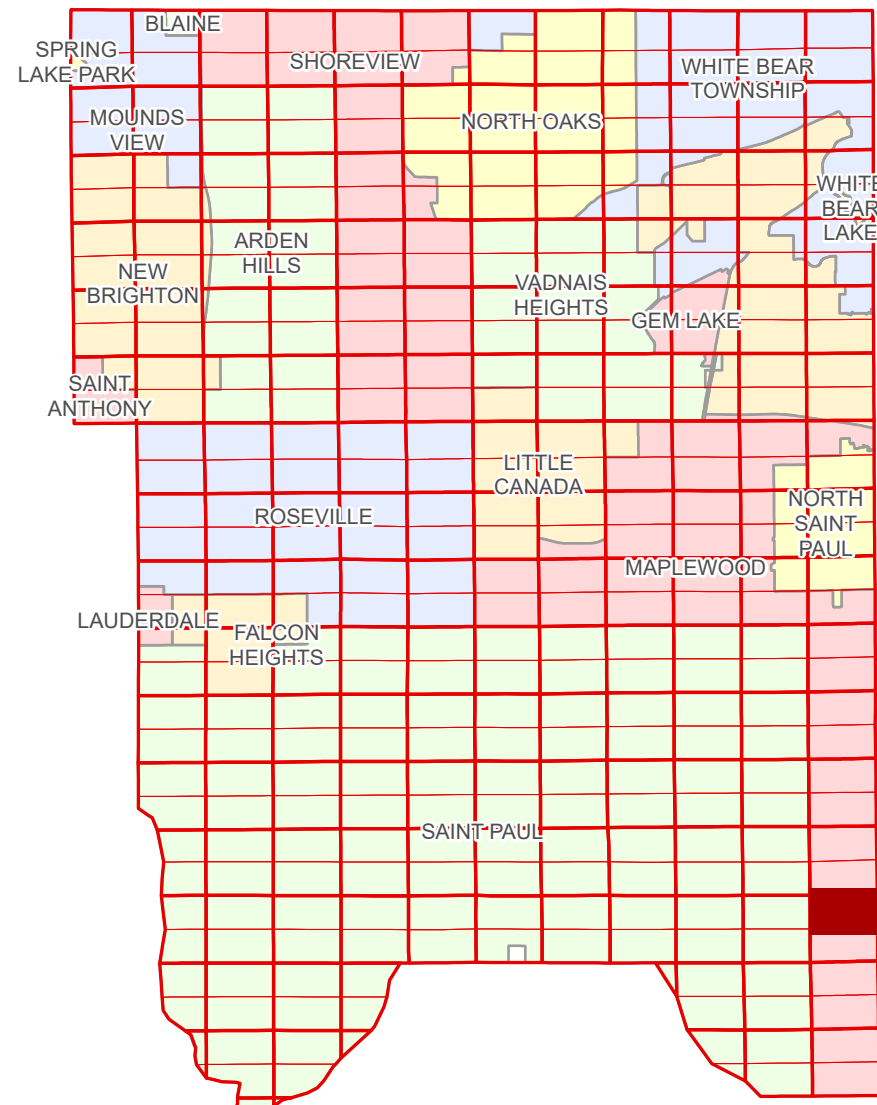


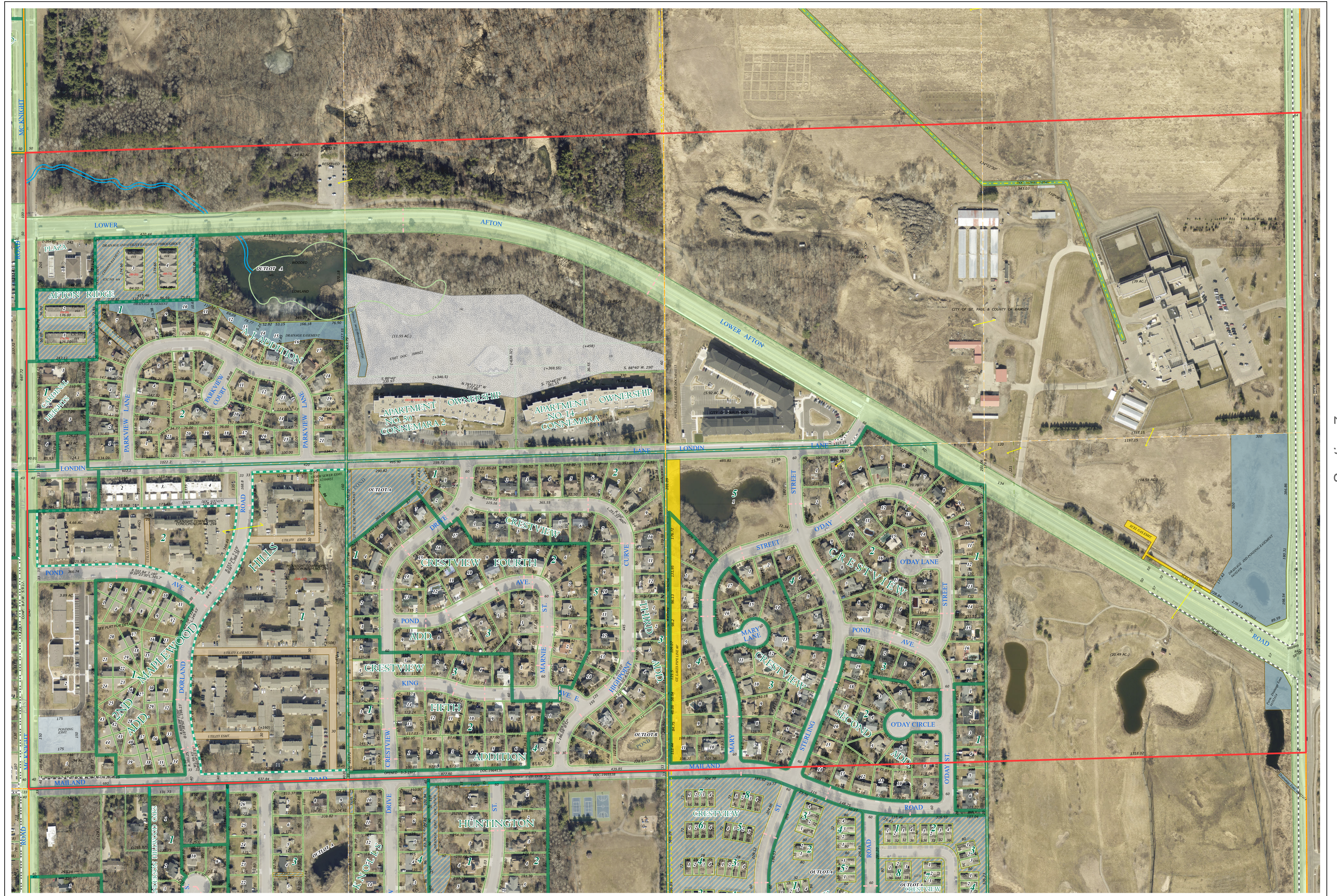
Ramsey County Minnesota Parcel Map

Ramsey County
Section 1

N Half
Section 12
T 28 N
R 22 W



Ramsey County
Section 11



Section 7
Washington County

Legend	
	Section
	Quarter
	Quarter Quarter
	County Right of Way
	Municipal Right of Way
Subdivision Type	
	Subdivision Plat
	Condominium
Division Type	
	Lot
	Metes & Bounds
Tax Parcel Type	
	Real Property
Easement Type	
	Ponding
	Pedestrian
	Private Driveway
	Utility, Gas & Oil
	Utility, Storm & Sanitary Sewer
	Utility, Unidentified
	Drainage & Utility
	Drainage
	Misc Easements

Aerial Imagery Date: March 11 - April 4, 2024



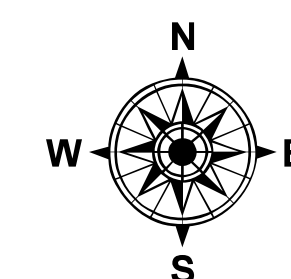
The information on this map is a compilation of Ramsey County Records. THE COUNTY DOES NOT WARRANT OR GUARANTEE THE ACCURACY OF THIS DATA. The County disclaims any liability for any injuries, time delays, or expenses you may suffer if you rely in any manner on the accuracy of this data.

Produced by Information Services Enterprise GIS Division
RCGISMetaData@Co.Ramsey.MN.US

NOTE: This is not an official Ramsey County tax lot map. This is based on the data available in the Geographic Information System, which may vary from tax data officially recorded in the Tax System. For an official tax map, please contact the Office of Property Records and Revenue.

651-266-2000
AskPropertyTaxandRecords@co.ramsey.mn.us

Section 12
Ramsey County



0 4590 180 270 360
Feet

1" = 200'
1:2,400

N122822

1/3/2025