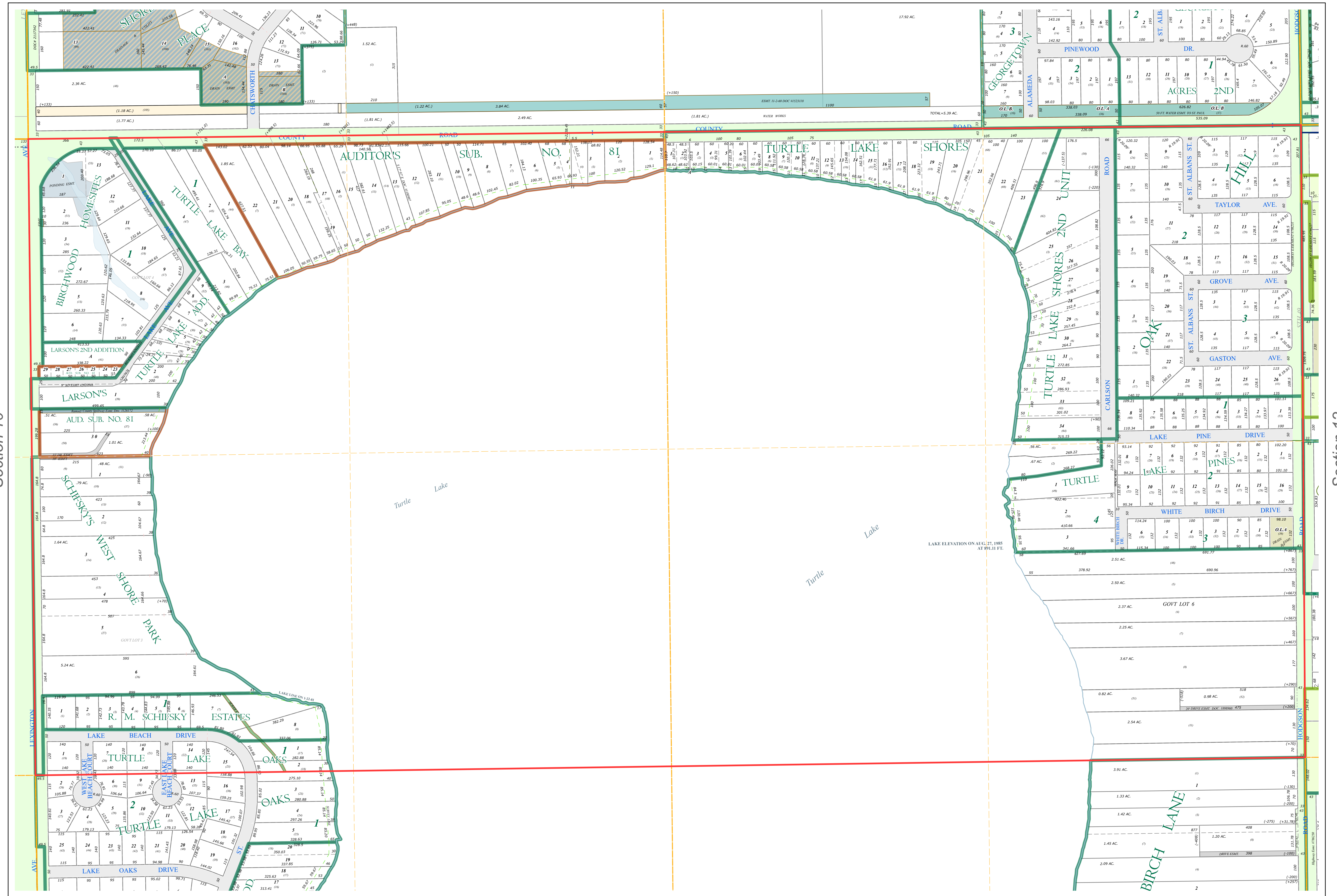
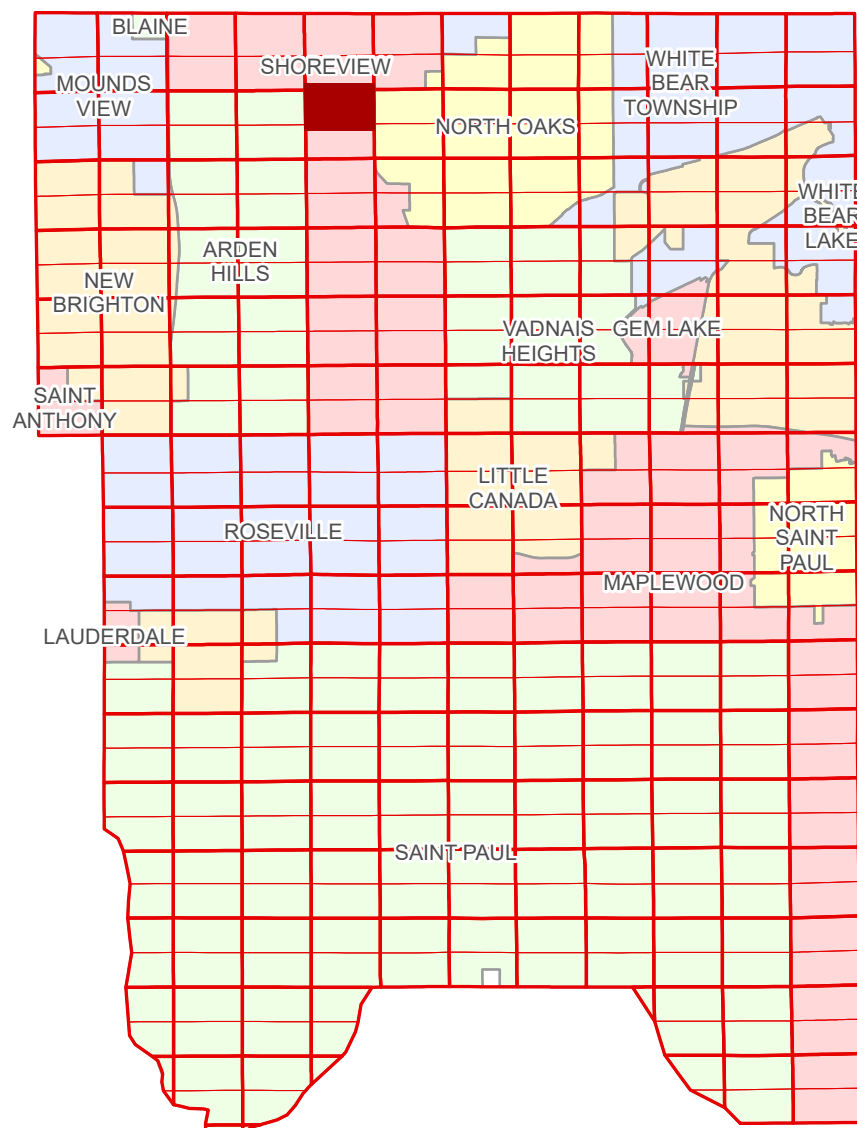


N Half
Section 11
T 30 N
R 23 W

Ramsey County Minnesota Parcel Map

Ramsey County
Section 2



Ramsey County
Section 10

Section 12
Ramsey County

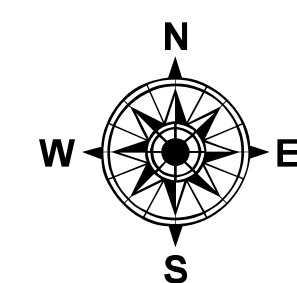
Legend

Section	Division Type
Quarter	Lot
Quarter Quarter	Outlot
County Right of Way	Metes & Bounds
Municipal Right of Way	Tax Parcel Type
Subdivision Type	Real Property
Subdivision Plat	Easement Type
Registered Land Survey	Ponding
Auditors's Subdivision	Private Driveway
	Utility, Storm & Sanitary Sewer
	Drainage

The information on this map is a compilation of Ramsey County Records. THE COUNTY DOES NOT WARRANT OR GUARANTEE THE ACCURACY OF THIS DATA. The County disclaims any liability for any injuries, time delays, or expenses you may suffer if you rely in any manner on the accuracy of this data.
Produced by Information Services Enterprise GIS Division
RCGISMetaData@Co.Ramsey.MN.US

NOTE: This is not an official Ramsey County tax lot map. This is based on the data available in the Geographic Information System, which may vary from tax data officially recorded in the Tax System. For an official tax map, please contact the Office of Property Records and Revenue.
651-266-2000
AskPropertyTaxandRecords@co.ramsey.mn.us

Section 11
Ramsey County



0 450 180 270 360 Feet
1" = 200'
1:2,400

N113023

1/3/2025