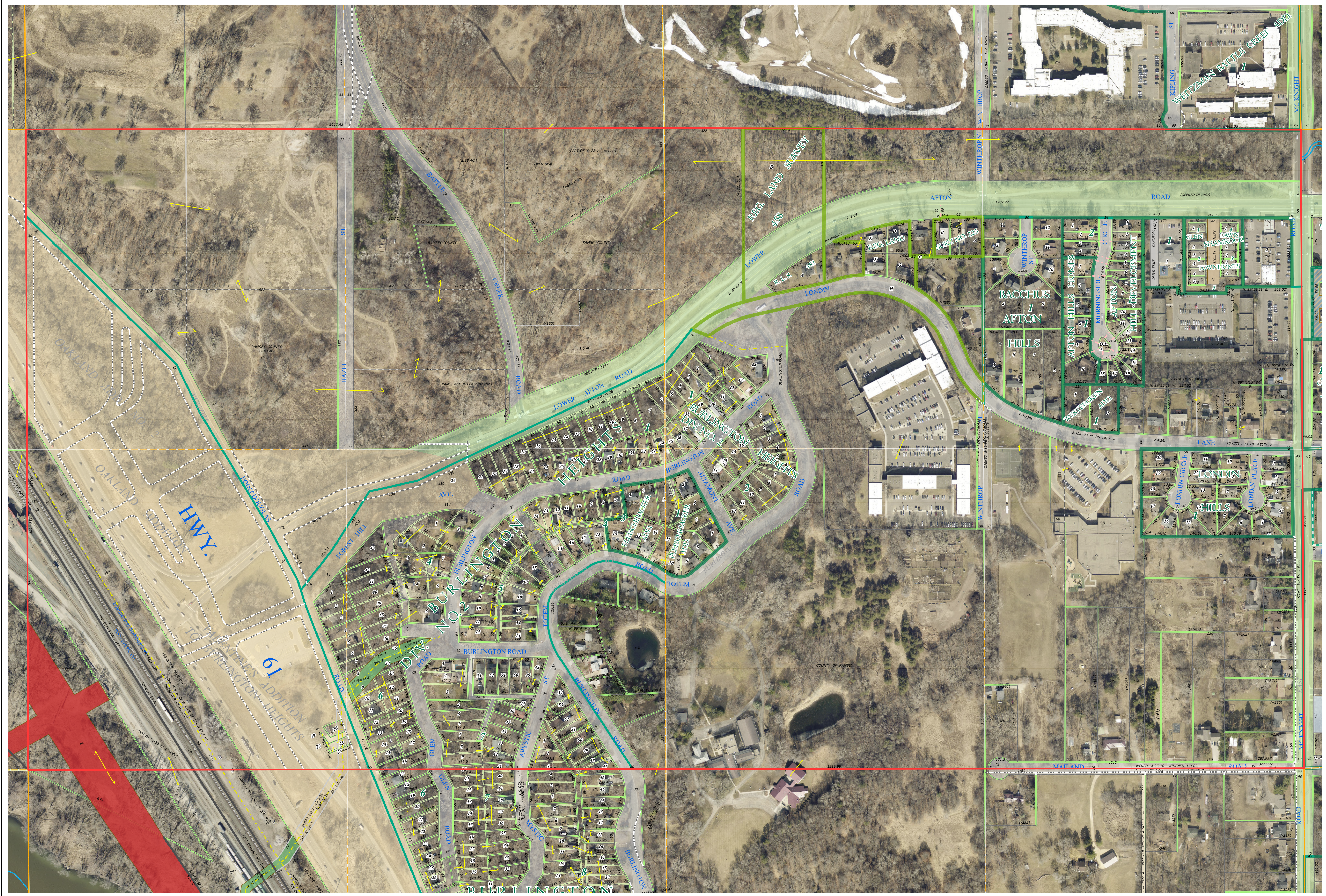
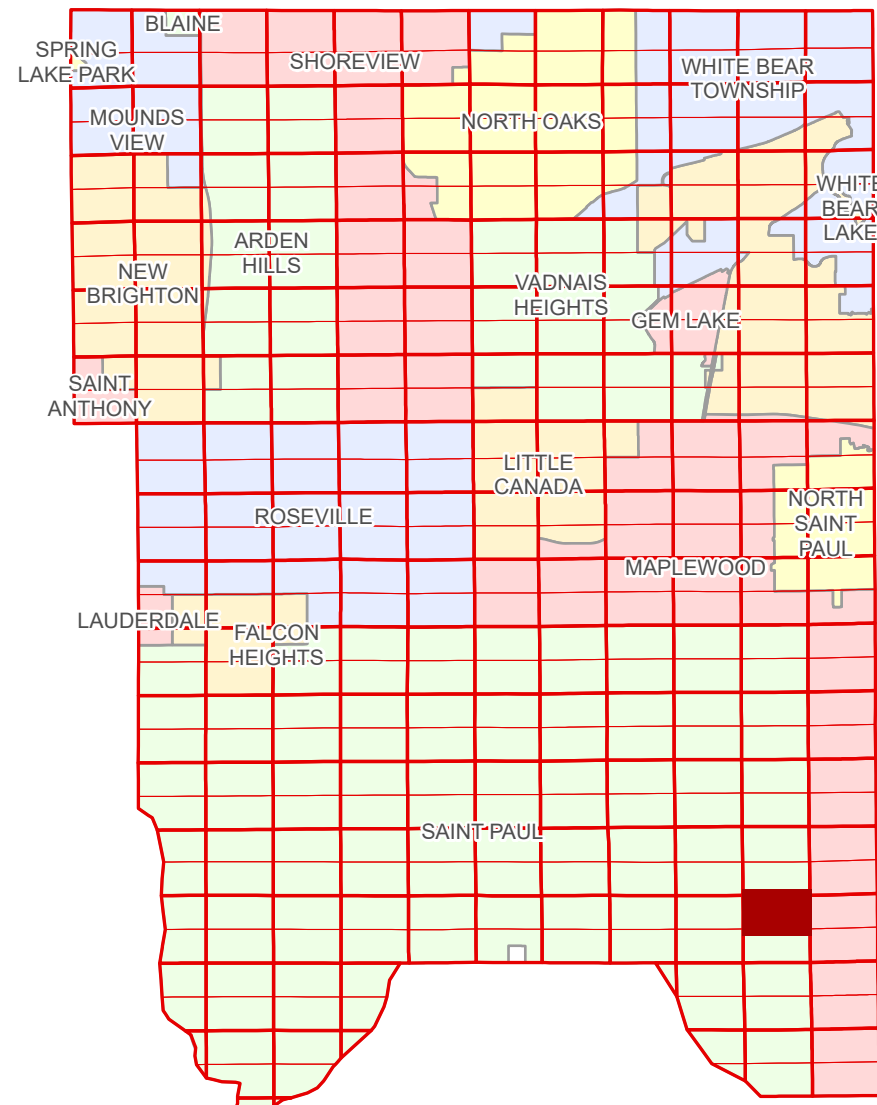


Ramsey County Minnesota Parcel Map

Ramsey County
Section 2

N Half
Section 11
T 28 N
R 22 W



Ramsey County
Section 10

Section 12
Ramsey County

Legend	
	Metes & Bounds
	Tax Parcel Type
	State Assessed Property
	Real Property
	Easement Type
	Private Driveway
Subdivision Type	Utility, Electric
	Utility, Storm & Sanitary Sewer
	Utility, Unidentified
Division Type	

Aerial Imagery Date: March 11 - April 4, 2024



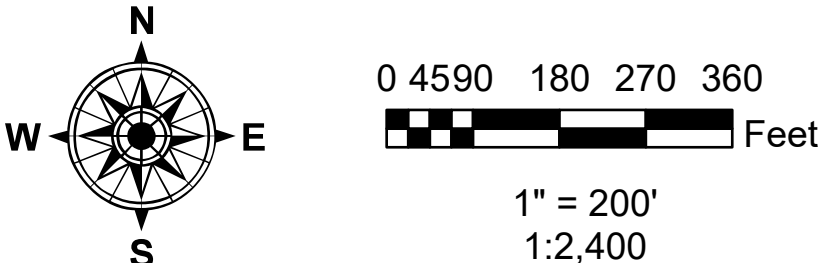
The information on this map is a compilation of Ramsey County Records. THE COUNTY DOES NOT WARRANT OR GUARANTEE THE ACCURACY OF THIS DATA. The County disclaims any liability for any injuries, time delays, or expenses you may suffer if you rely in any manner on the accuracy of this data.

Produced by Information Services Enterprise GIS Division
RCGISMetaData@Co.Ramsey.MN.US

NOTE: This is not an official Ramsey County tax lot map. This is based on the data available in the Geographic Information System, which may vary from tax data officially recorded in the Tax System. For an official tax map, please contact the Office of Property Records and Revenue.

651-266-2000
AskPropertyTaxandRecords@co.ramsey.mn.us

Section 11
Ramsey County



N112822
1/3/2025