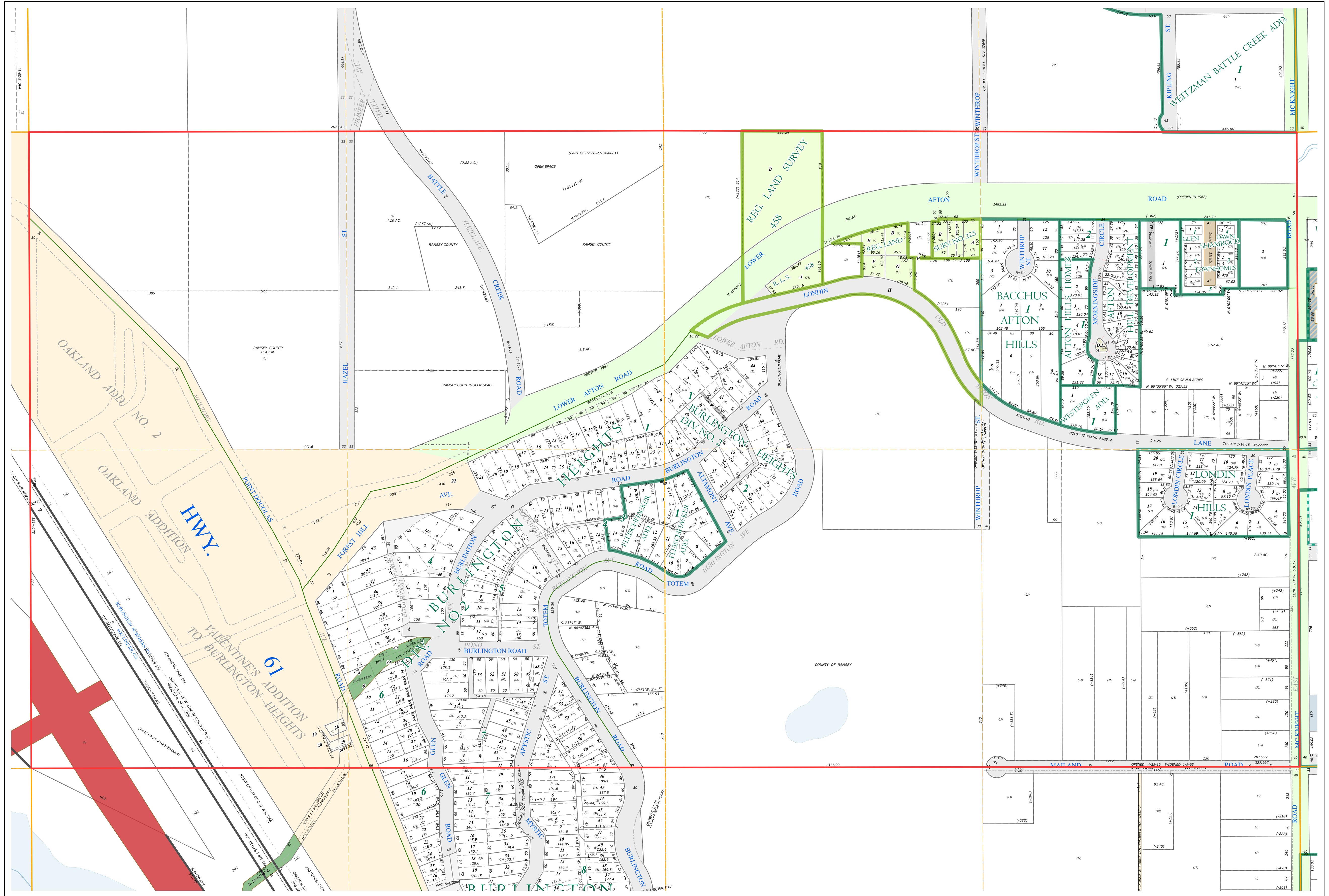
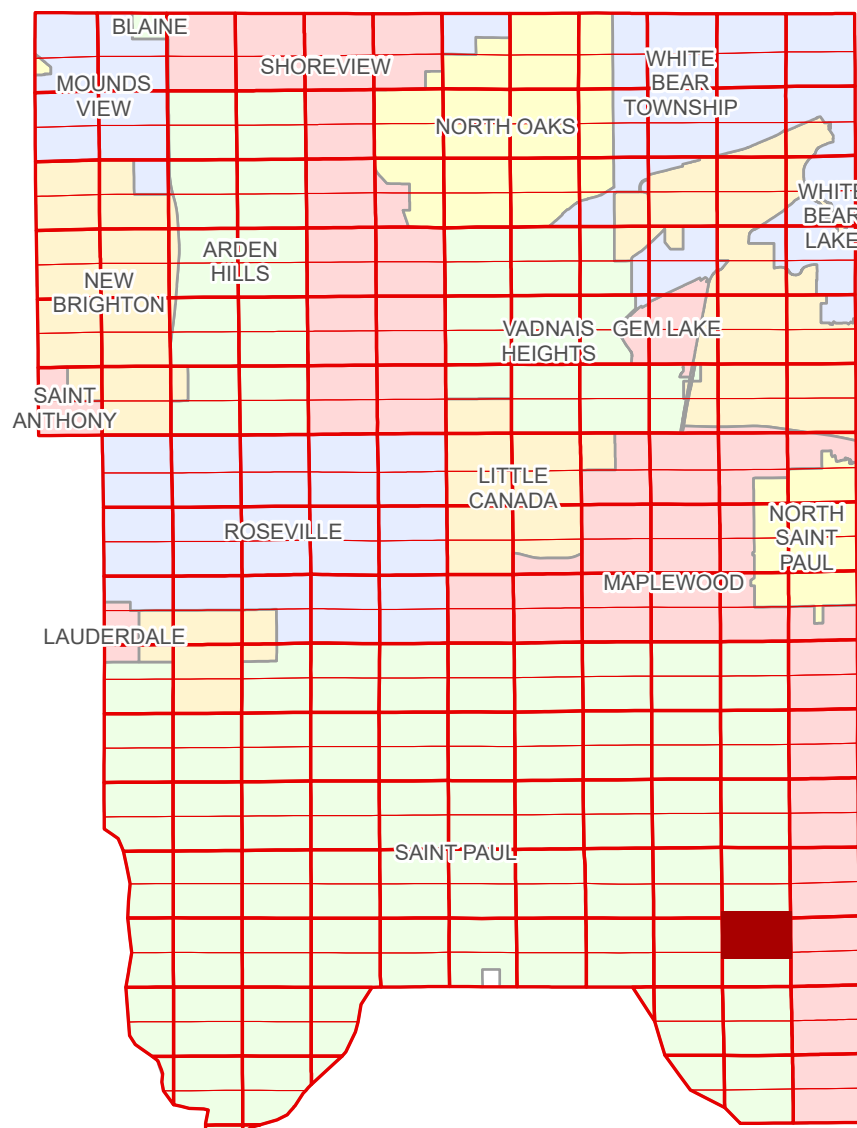


Ramsey County Minnesota Parcel Map

Ramsey County
Section 2

N Half
Section 11
T 28 N
R 22 W



Legend

Section	Metes & Bounds
Quarter	Tax Parcel Type
Quarter Quarter	State Assessed Property
Federal Right of Way	Real Property
County Right of Way	Easement Type
Municipal Right of Way	Private Driveway
Subdivision Type	Utility, Electric
Subdivision Plat	Utility, Storm & Sanitary Sewer
Registered Land Survey	Utility, Unidentified
Division Type	
Lot	
Outlot	
Tract	

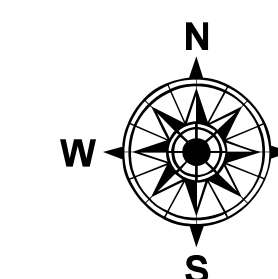
The information on this map is a compilation of Ramsey County Records. THE COUNTY DOES NOT WARRANT OR GUARANTEE THE ACCURACY OF THIS DATA. The County disclaims any liability for any injuries, time delays, or expenses you may suffer if you rely in any manner on the accuracy of this data.

Produced by Information Services Enterprise GIS Division
RCGISMetaData@Co.Ramsey.MN.US

NOTE: This is not an official Ramsey County tax lot map. This is based on the data available in the Geographic Information System, which may vary from tax data officially recorded in the Tax System. For an official tax map, please contact the Office of Property Records and Revenue.

651-266-2000
AskPropertyTaxandRecords@co.ramsey.mn.us

Section 11
Ramsey County



0 4590 180 270 360 Feet

1" = 200'
1:2,400

N112822

1/3/2025