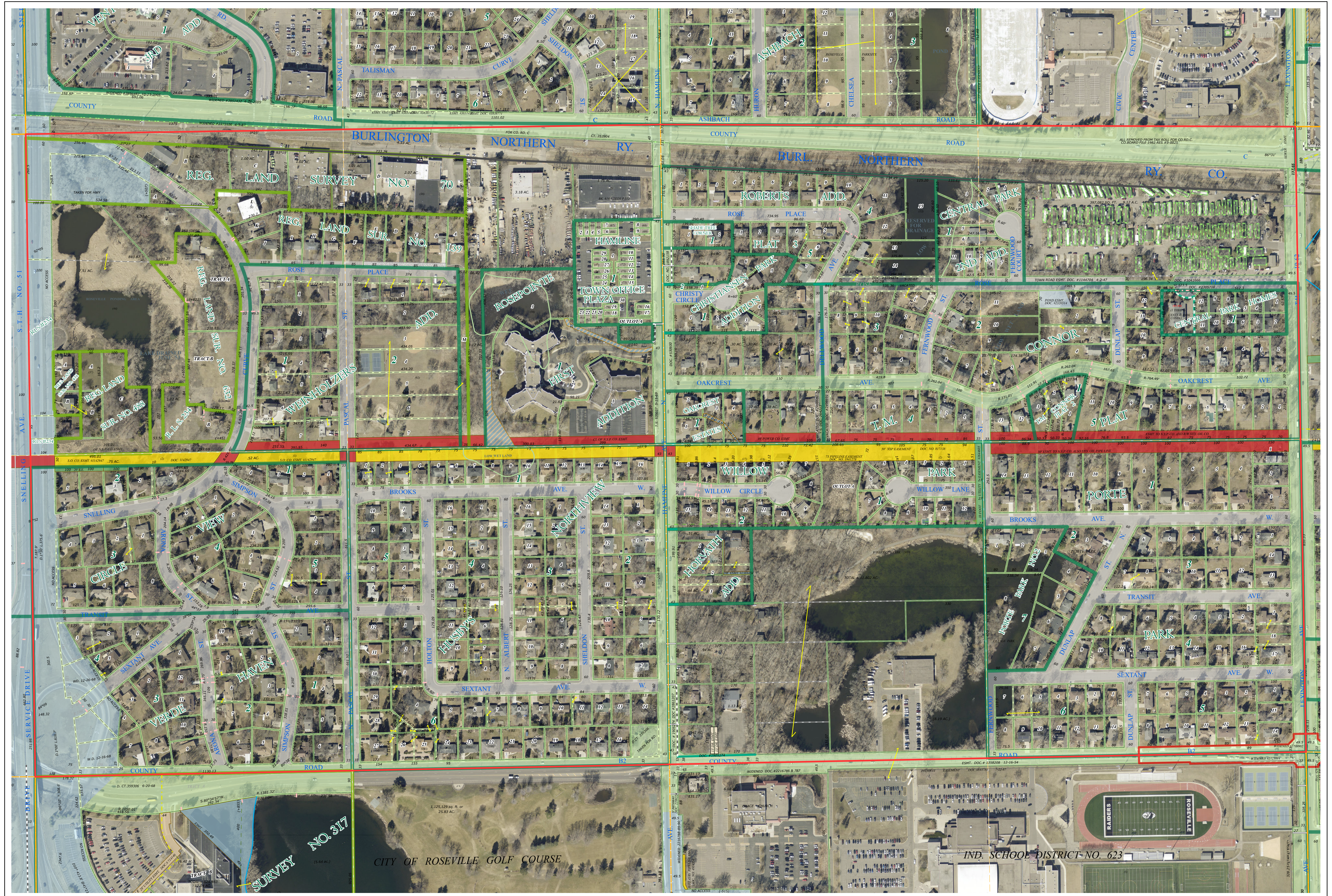
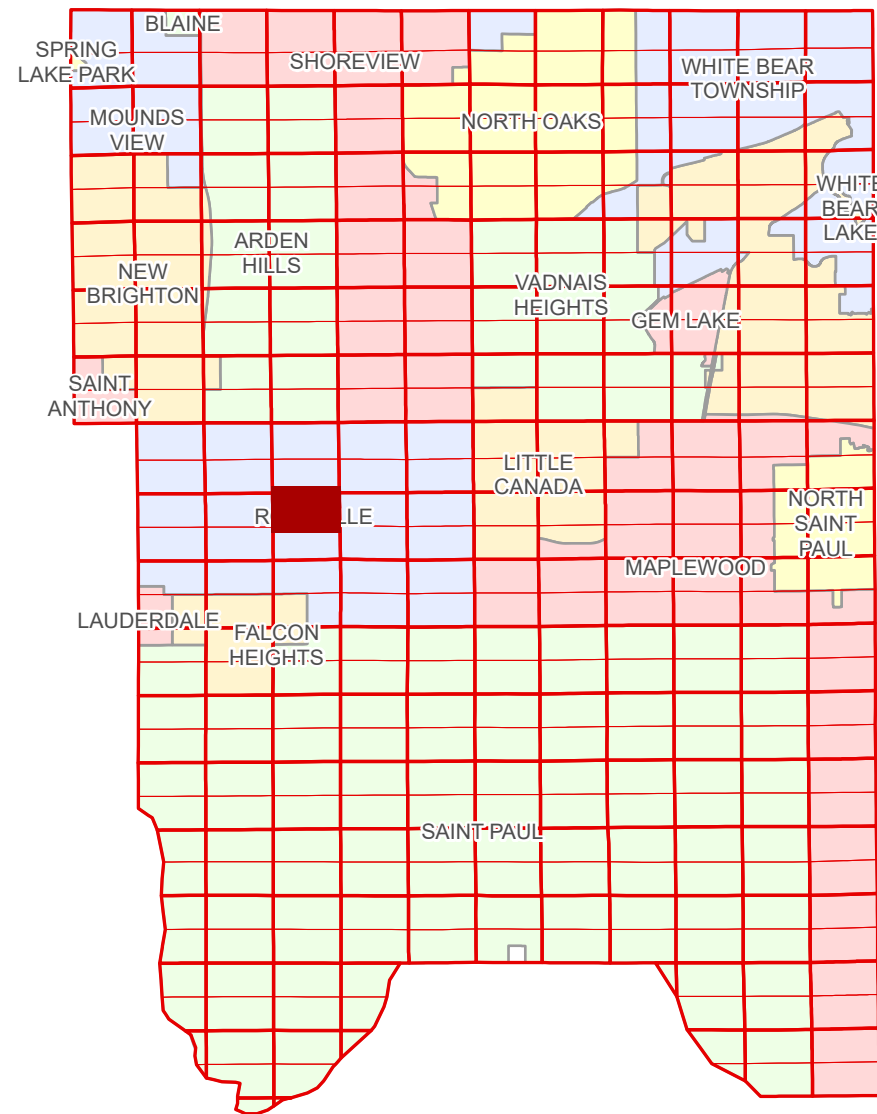


Ramsey County Minnesota Parcel Map

N Half
Section 10
T 29 N
R 23 W

Ramsey County
Section 3



Ramsey County
Section 9

Section 11
Ramsey County

Legend	
	Section
	Quarter
	Quarter Quarter
	State Right of Way
	County Right of Way
	Municipal Right of Way
Subdivision Type	
	Subdivision Plat
	Registered Land Survey
	Highway RoW Plat
	Condominium
Division Type	
	Lot
	Metes & Bounds
Tax Parcel Type	
	State Assessed Property
	Manufactured Home
	Real Property
Easement Type	
	Ponding
	Private Access
	Utility, Electric
	Utility, Gas & Oil
	Utility, Storm & Sanitary Sewer
	Drainage & Utility
	Drainage
	Misc Easements

Aerial Imagery Date: March 11 - April 4, 2024



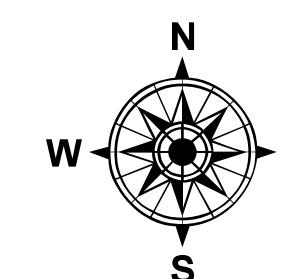
The information on this map is a compilation of Ramsey County Records. THE COUNTY DOES NOT WARRANT OR GUARANTEE THE ACCURACY OF THIS DATA. The County disclaims any liability for any injuries, time delays, or expenses you may suffer if you rely in any manner on the accuracy of this data.

NOTE: This is not an official Ramsey County tax lot map. This is based on the data available in the Geographic Information System, which may vary from tax data officially recorded in the Tax System. For an official tax map, please contact the Office of Property Records and Revenue.

Produced by Information Services Enterprise GIS Division
RCGISMetaData@Co.Ramsey.MN.US

651-266-2000
AskPropertyTaxandRecords@co.ramsey.mn.us

Section 10
Ramsey County



0 4590 180 270 360 Feet

1" = 200'

1:2,400

N102923

1/3/2025