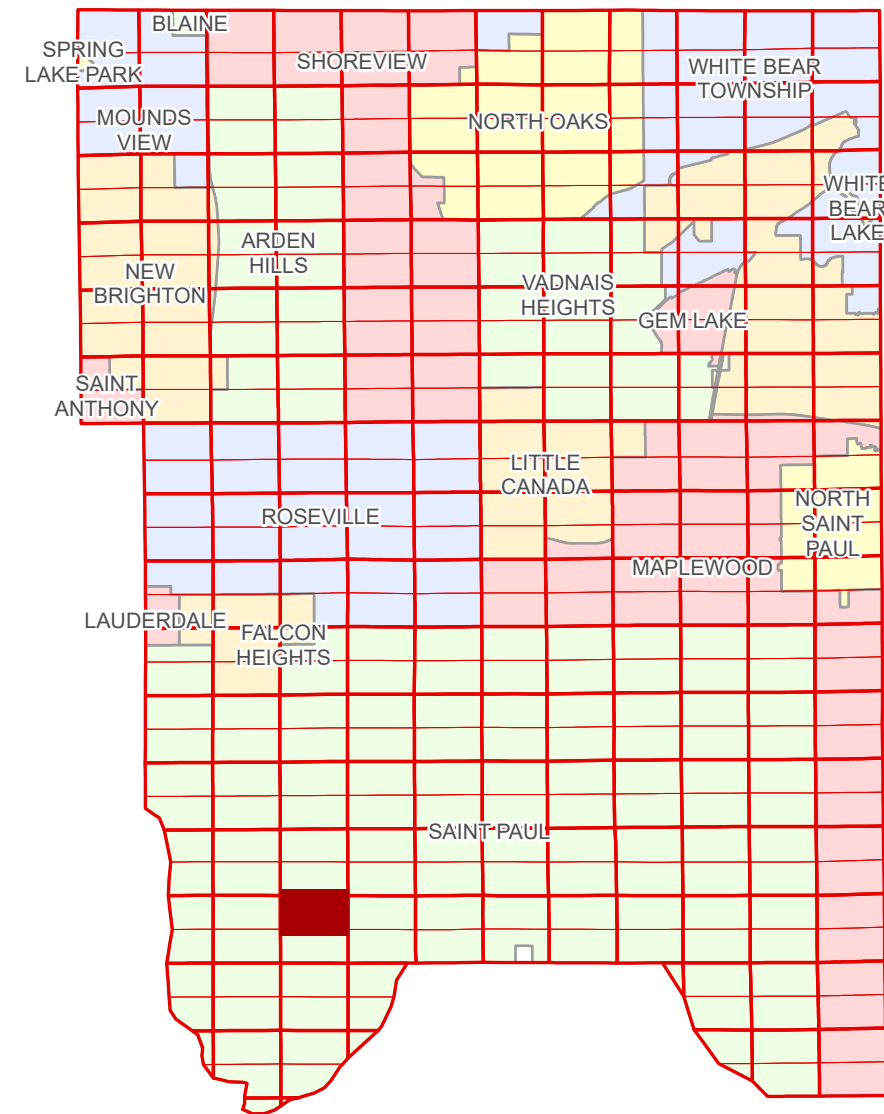


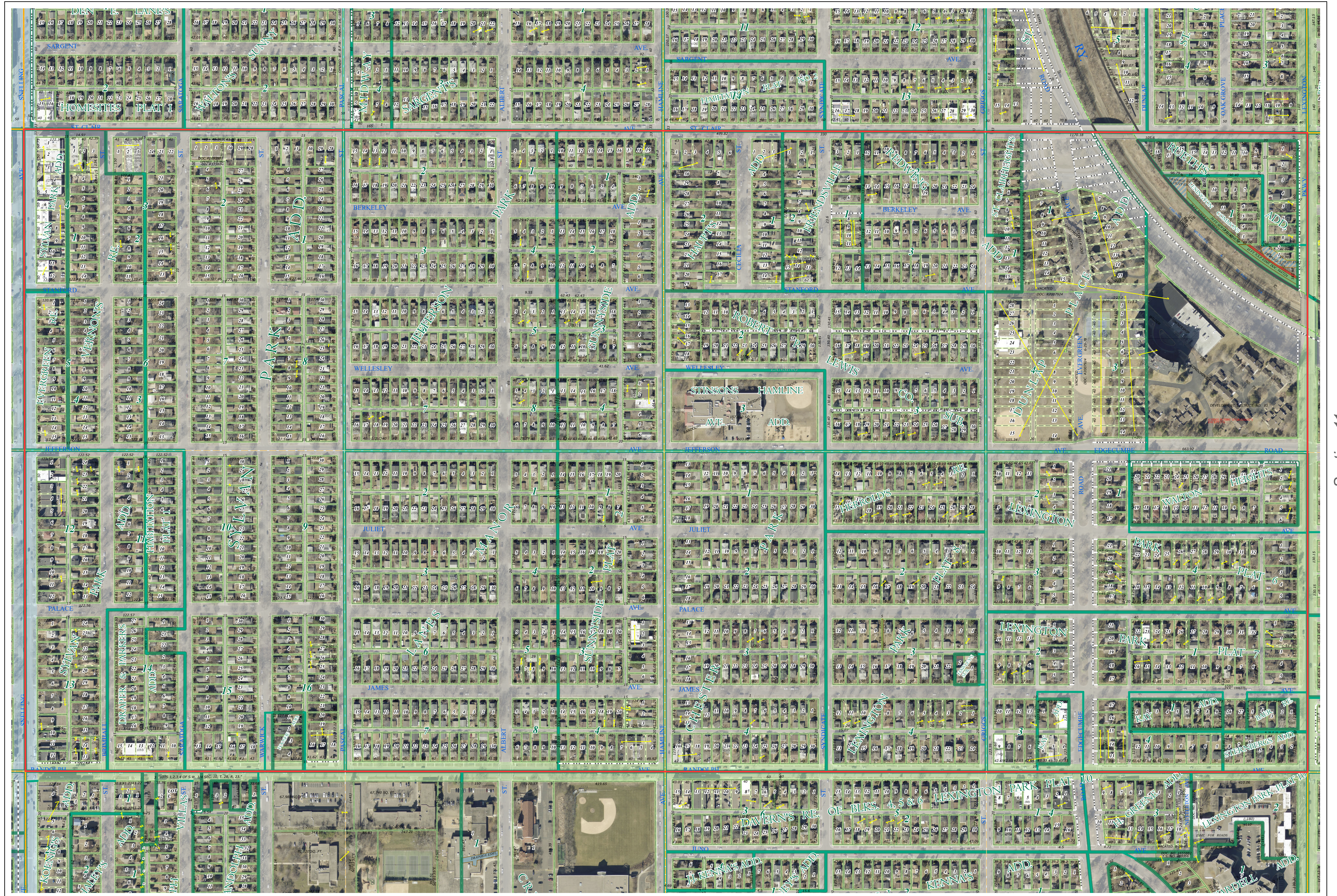
N Half
Section 10
T 28 N
R 23 W

Ramsey County Minnesota Parcel Map

Ramsey County
Section 3



Ramsey County
Section 9



Section 11
Ramsey County

| Legend | | | |
|--------|------------------------|--|---------------------------------|
| | Section | | Personal Property |
| | Quarter | | State Assessed Property |
| | Quarter Quarter | | Real Property |
| | State Right of Way | | Private Access |
| | County Right of Way | | Private Driveway |
| | Municipal Right of Way | | Utility, Electric |
| | Subdivision Type | | Utility, Storm & Sanitary Sewer |
| | Subdivision Plat | | Drainage & Utility |
| | Division Type | | |
| | Lot | | |
| | Metes & Bounds | | |

Aerial Imagery Date: March 11 - April 4, 2024



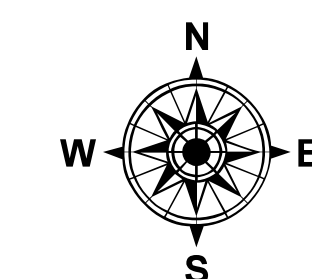
The information on this map is a compilation of Ramsey County Records. THE COUNTY DOES NOT WARRANT OR GUARANTEE THE ACCURACY OF THIS DATA. The County disclaims any liability for any injuries, time delays, or expenses you may suffer if you rely in any manner on the accuracy of this data.

Produced by Information Services Enterprise GIS Division
RCGSMetaData@Co.Ramsey.MN.US

NOTE: This is not an official Ramsey County tax lot map. This is based on the data available in the Geographic Information System, which may vary from tax data officially recorded in the Tax System. For an official tax map, please contact the Office of Property Records and Revenue.

651-266-2000
AskPropertyTaxandRecords@co.ramsey.mn.us

Section 10
Ramsey County



0 4590 180 270 360 Feet

1" = 200'
1:2,400

N102823

1/3/2025