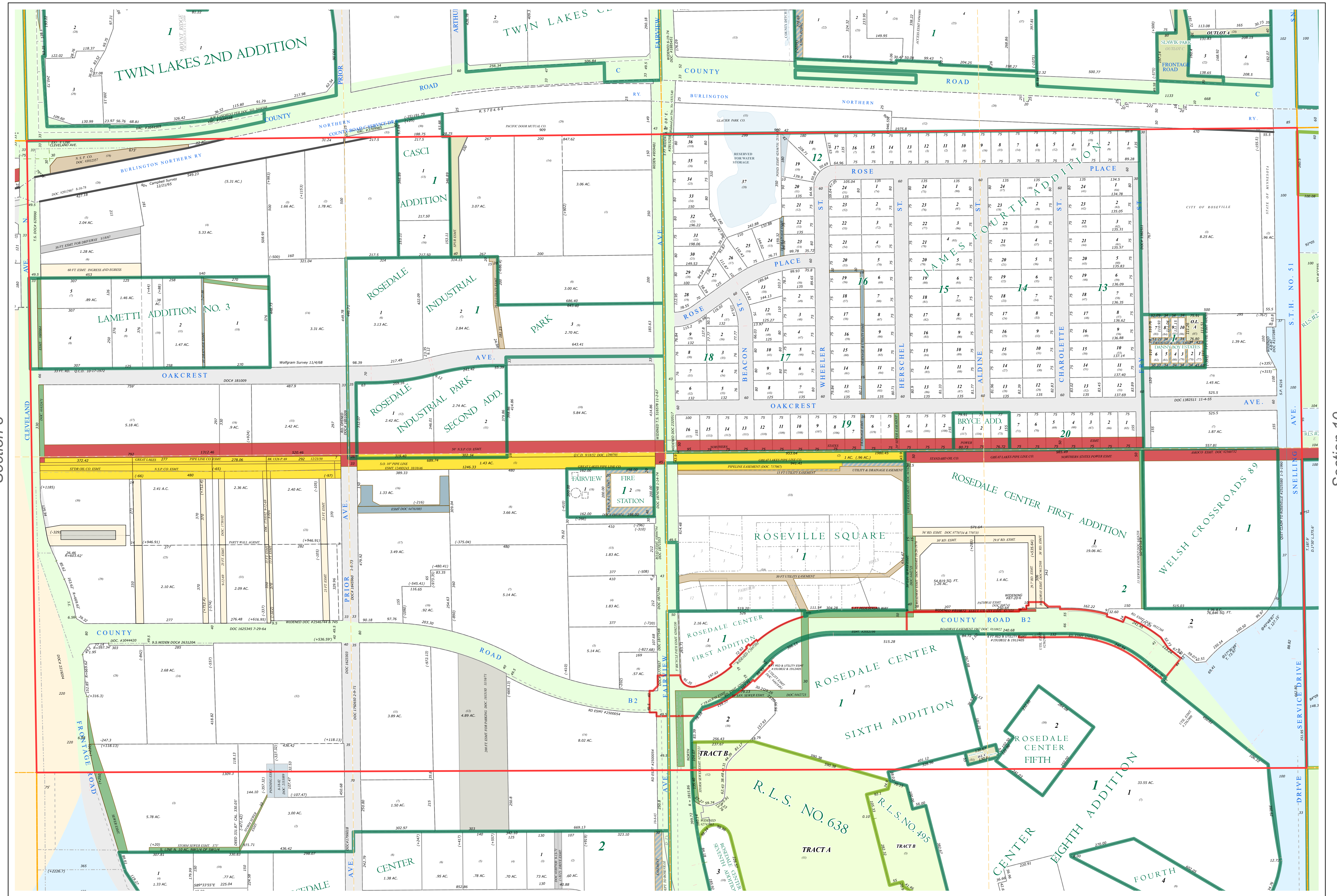
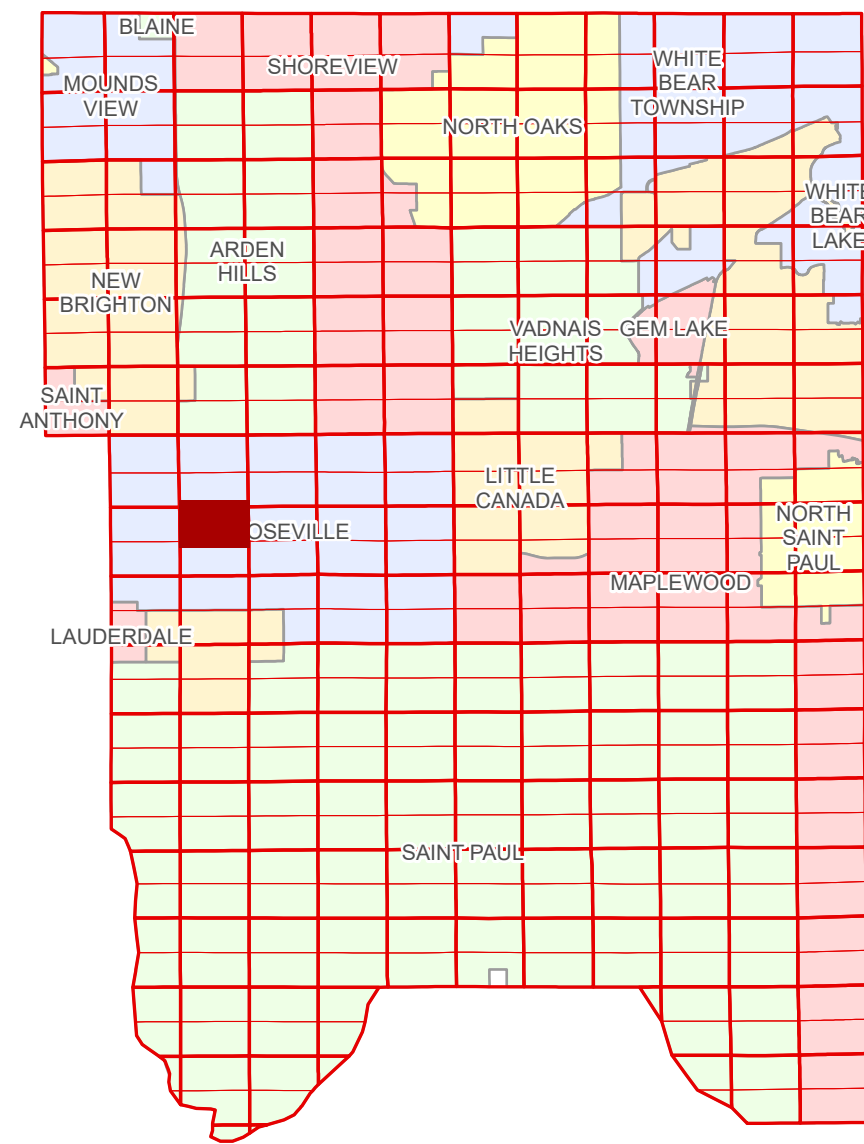


N Half
Section 9
T 29 N
R 23 W

Ramsey County Minnesota Parcel Map

Ramsey County
Section 4



Ramsey County
Section 8

Section 10
Ramsey County

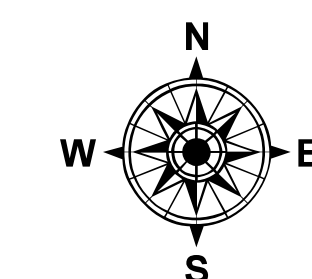
Legend	
	Section
	Quarter
	Quarter Quarter
	Federal Right of Way
	State Right of Way
	County Right of Way
	Municipal Right of Way
	Subdivision Type
	Registered Land Survey
	Highway RoW Plat
	Division Type
	Lot
	Outlot
	Tract
	Metes & Bounds
	Tax Parcel Type
	Personal Property
	State Assessed Property
	Real Property
	Easement Type
	Ponding
	Parking
	Pedestrian
	Private Access
	Private Driveway
	Railroad
	Utility, Electric
	Utility, Gas & Oil
	Utility, Storm & Sanitary Sewer
	Utility, Water
	Utility, Unidentified
	Drainage & Utility
	Drainage
	Misc Easements

The information on this map is a compilation of Ramsey County tax parcel data. This is based on the data available in the Geographic Information System, which may vary from tax data officially recorded in the Tax System. For an official tax map, please contact the Office of Property Records and Revenue.

Produced by Information Services Enterprise GIS Division
RCGISMataData@Co.Ramsey.MN.US

561-266-2000
AskPropertyTaxandRecords@co.ramsey.mn.us

Section 9
Ramsey County



0 450 900 1800 3600 Feet

1" = 200'

1:2,400

N092923

1/3/2025