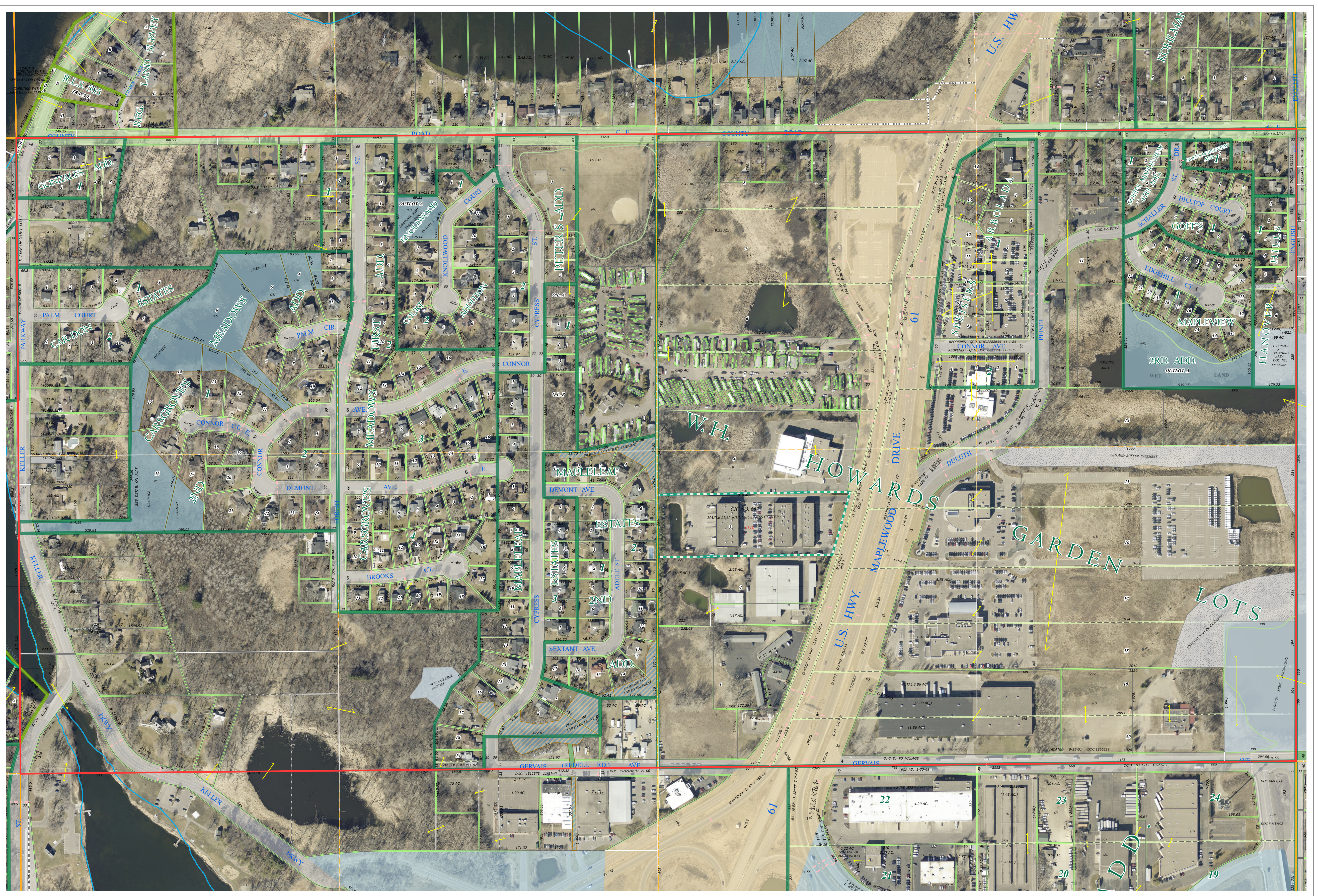
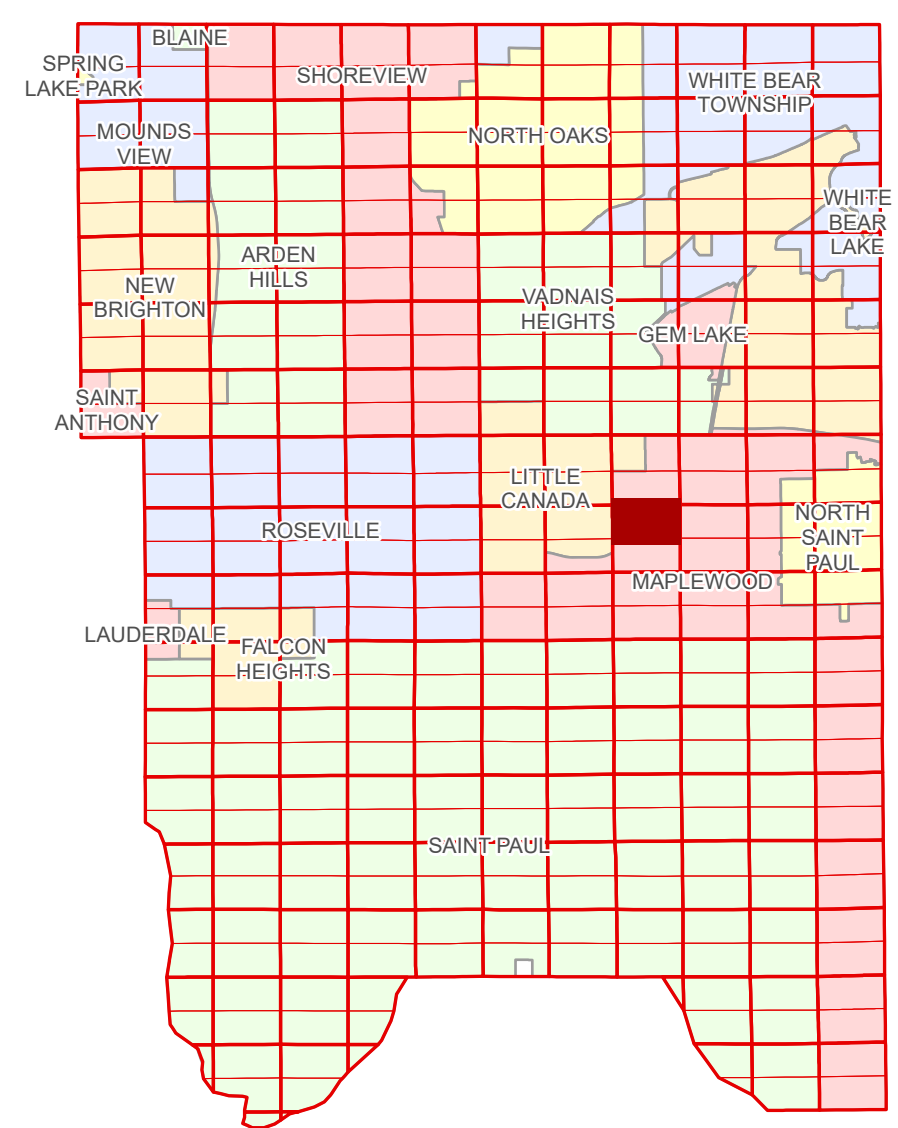


# Ramsey County Minnesota Parcel Map

N Half  
Section 9  
T 29 N  
R 22 W

Ramsey County  
Section 4



Ramsey County  
Section 8

Section 10  
Ramsey County

Legend			
	Section		Metes & Bounds
	Quarter		Tax Parcel Type
	Quarter Quarter		Manufactured Home
	Federal Right of Way		Real Property
	County Right of Way		Easement Type
	Municipal Right of Way		Ponding
	Subdivision Type		Pedestrian
	Subdivision Plat		Private Driveway
	Registered Land Survey		Utility, Storm & Sanitary Sewer
	Condominium		Drainage & Utility
	Division Type		Drainage
	Lot		Misc Easements

The information on this map is a compilation of Ramsey County Records. THE COUNTY DOES NOT WARRANT OR GUARANTEE THE ACCURACY OF THIS DATA. The County disclaims any liability for any injuries, time delays, or expenses you may suffer if you rely in any manner on the accuracy of this data.

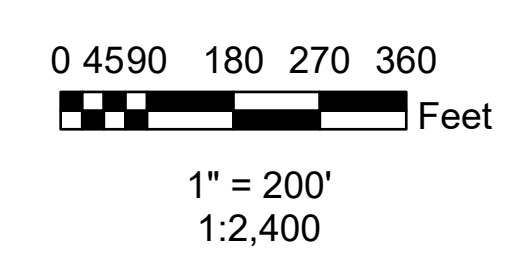
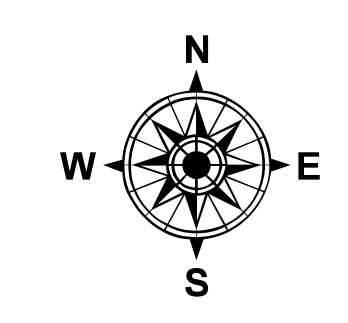
NOTE: This is not an official Ramsey County tax lot map. This is based on the data available in the Geographic Information System, which may vary from tax data officially recorded in the Tax System. For an official tax map, please contact the Office of Property Records and Revenue.

Produced by Information Services Enterprise GIS Division  
RCGISMetaData@Co.Ramsey.MN.US

651-266-2000  
AskPropertyTaxandRecords@co.ramsey.mn.us

Section 9  
Ramsey County

Aerial Imagery Date: March 11 - April 4, 2024



N092922

1/3/2025