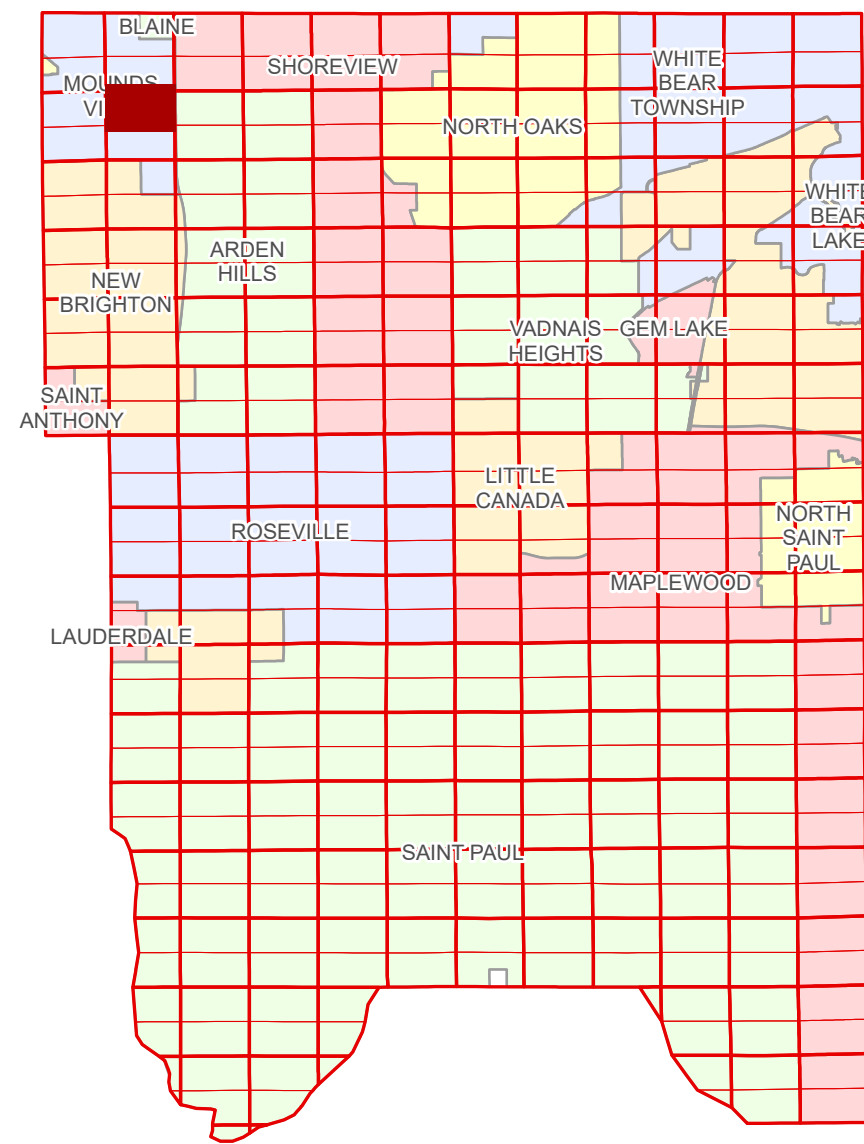


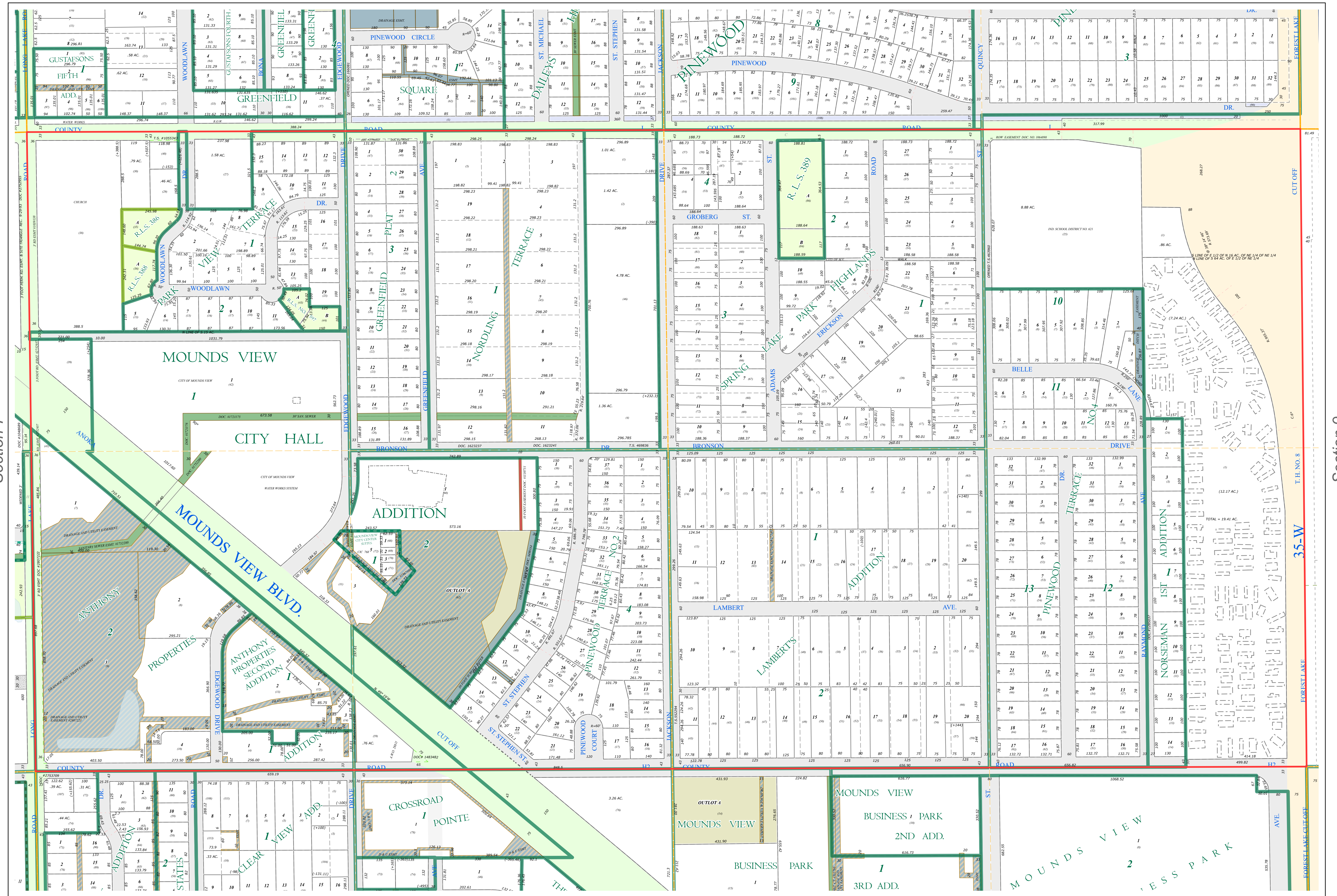
N Half
Section 8
T 30 N
R 23 W

Ramsey County Minnesota Parcel Map

Ramsey County
Section 5



Ramsey County
Section 7



Ramsey County
Section 9

Legend

- Section
- Quarter
- Quarter Quarter
- Federal Right of Way
- County Right of Way
- Municipal Right of Way
- Subdivision Type
- Subdivision Plat
- Registered Land Survey
- Condominium
- Division Type
- Lot
- Outlot
- Tract
- Metes & Bounds
- Tax Parcel Type
- Personal Property
- Manufactured Home
- Real Property
- Easement Type
- Utility, Electric
- Utility, Storm & Sanitary Sewer
- Drainage & Utility
- Drainage

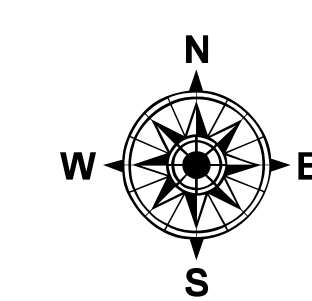
The information on this map is a compilation of Ramsey County Records. THE COUNTY DOES NOT WARRANT OR GUARANTEE THE ACCURACY OF THIS DATA. THE County disclaims any liability for any injuries, time delays, or expenses you may suffer if you rely in any manner on the accuracy of this data.

Produced by Information Services Enterprise GIS Division
RCGSMetaData@Co.Ramsey.MN.US

NOTE: This is not an official Ramsey County tax lot map. This is based on the data available in the Geographic Information System, which may vary from tax data officially recorded in the Tax System. For an official tax map, please contact the Office of Property Records and Revenue.

651-266-2000
AskPropertyTaxandRecords@co.ramsey.mn.us

Section 8
Ramsey County



0 4590 180 270 360
Feet

1" = 200'

1:2,400

N083023

1/3/2025