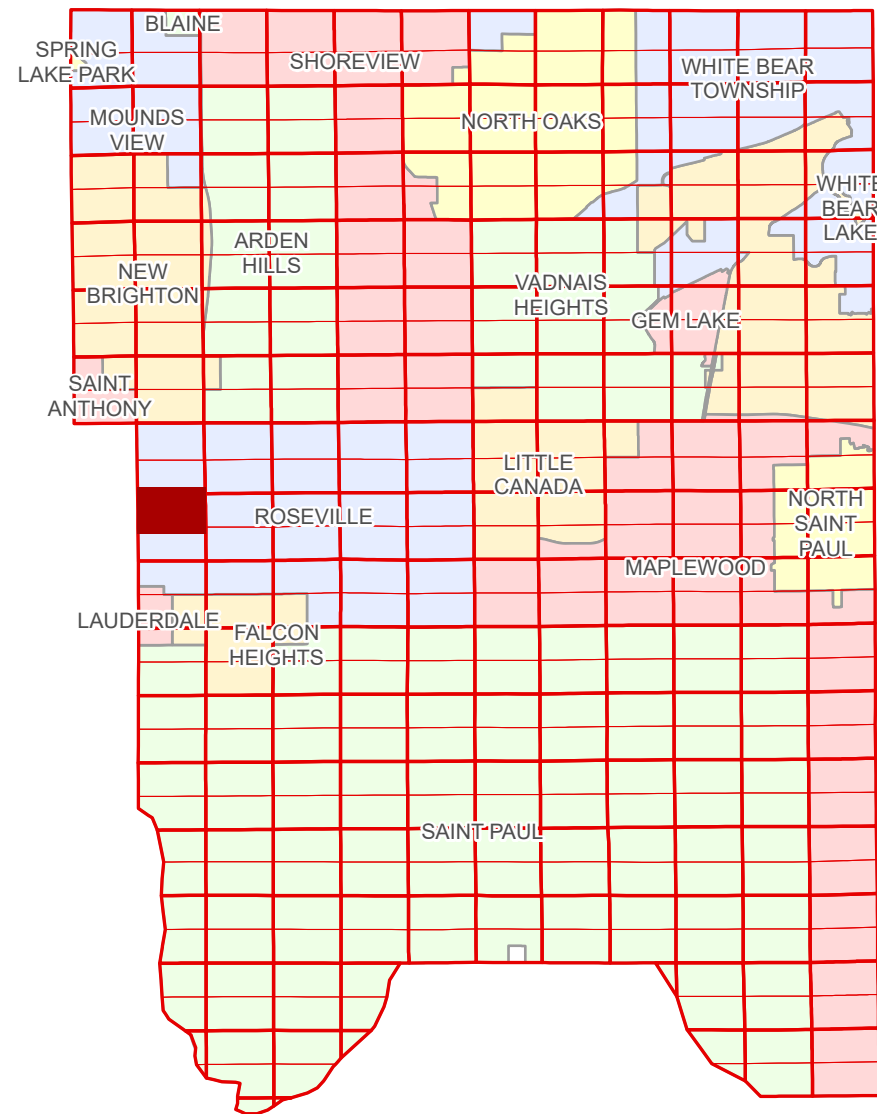


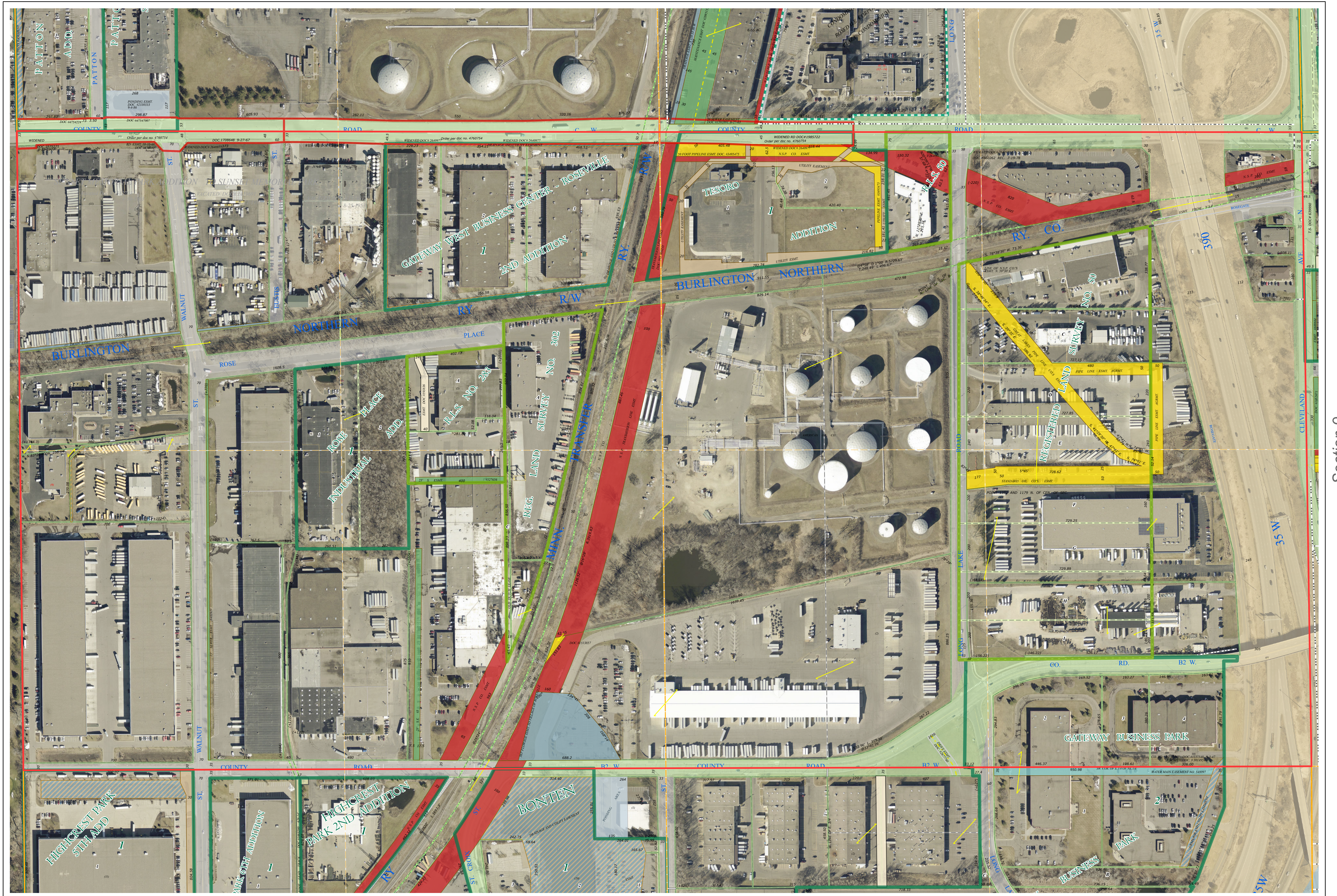
# Ramsey County Minnesota Parcel Map

Ramsey County  
Section 5

N Half  
Section 8  
T 29 N  
R 23 W



Hennepin County  
Section 7



Section 9  
Ramsey County

Legend			
	Section		Tax Parcel Type
	Quarter		Real Property
	Quarter Quarter		Easement Type
	Federal Right of Way		Utility, Electric
	County Right of Way		Utility, Gas & Oil
	Municipal Right of Way		Utility, Storm & Sanitary Sewer
	Subdivision Type		Utility, Water
	Registered Land Survey		Utility, Unidentified
	Highway RoW Plat		Drainage & Utility
	Division Type		Drainage
	Lot		Misc Easements
	Metes & Bounds		

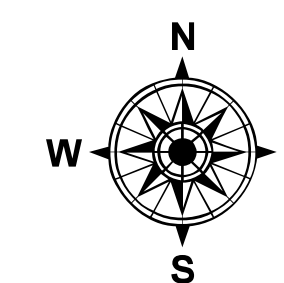
Aerial Imagery Date: March 11 - April 4, 2024



The information on this map is a compilation of Ramsey County Records. THE COUNTY DOES NOT WARRANT OR GUARANTEE THE ACCURACY OF THIS DATA. The County disclaims any liability for any injuries, time delays, or expenses you may suffer if you rely in any manner on the accuracy of this data.  
Produced by Information Services Enterprise GIS Division  
RCGISMetaData@Co.Ramsey.MN.US

NOTE: This is not an official Ramsey County tax lot map. This is based on the data available in the Geographic Information System, which may vary from tax data officially recorded in the Tax System. For an official tax map, please contact the Office of Property Records and Revenue.  
651-266-2000  
AskPropertyTaxandRecords@co.ramsey.mn.us

Section 8  
Ramsey County



0 450 180 270 360  
Feet

1" = 200'

1:2,400

N082923

1/3/2025